

SAMPLE REPORT

Description Hype Heavyweight Unisex Oversized Tee

Report Strike Off Approval

Spec UNISEX OVERSIZE 11A119

Unit CM

Size S,L

Status In Progress

Designer

Colour (BLK) Black-White, (0072) Off White-Black

Agent

Factory Un-Available Ltd

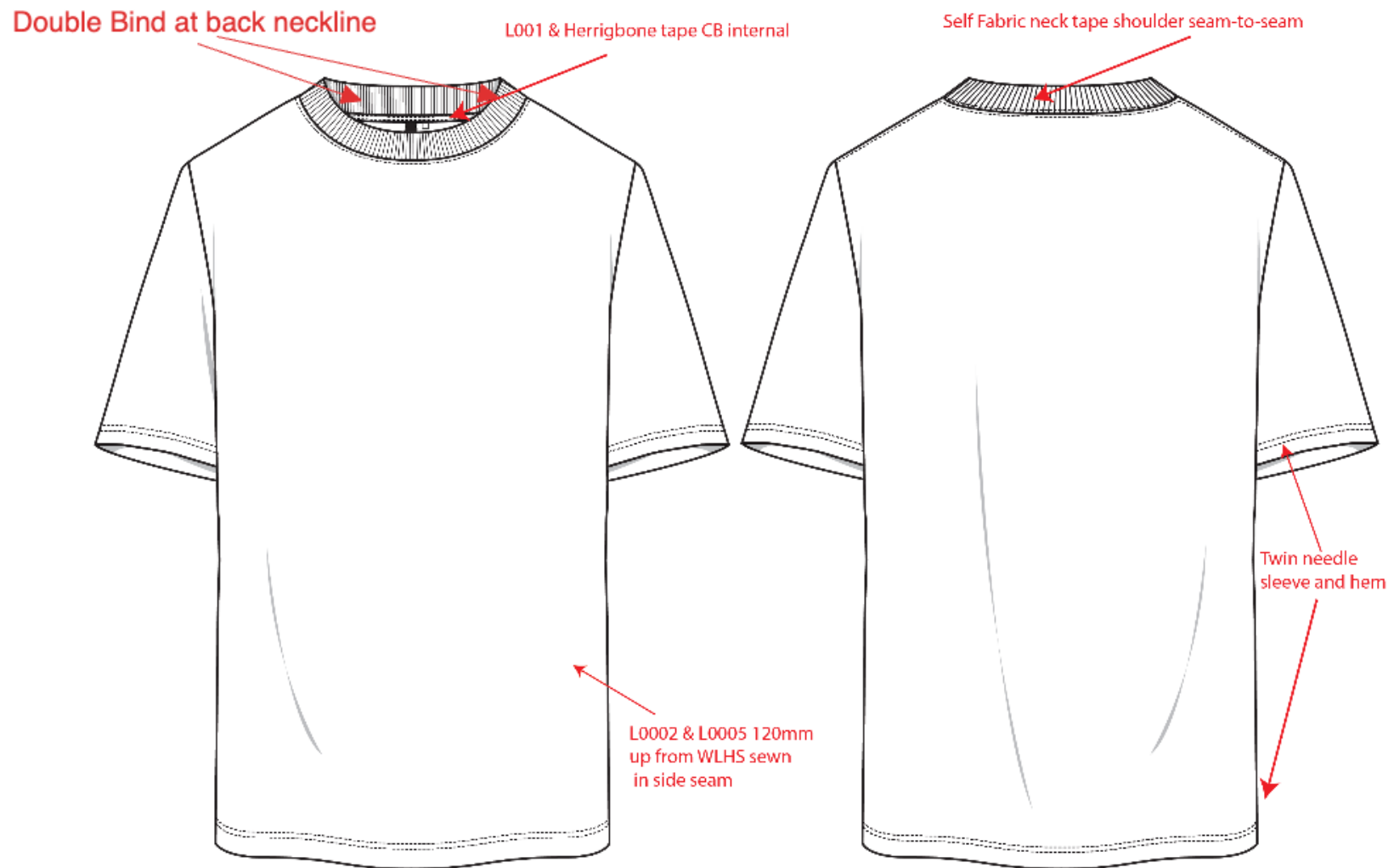


Specification

POM	POINTS TO MEASURE	S	V	R	Rev	L	V	R	Rev	Tol+	Tol-
A	Chest 2.5cm below armhole - FLAT	61.5				66.5				1.5	1.5
B	Sweep - FLAT	58				63				1.5	1.5
C	Shoulder Breadth	57				60				2	2
D	Neck Width: Seam to Seam w/o trim	21.1				22.3				0	0
E	Neck trim height (Rib)	3				3				0	0
F	FT neck depth from H.P.S w/o trim	10.7				11				0	0
G	BK neck depth from H.P.S w/o trim	3.5				3.5				0	0
H	Length from H.P.S. to Sweep	73				75.5				1.25	1.25
I	Shoulder slope w/o trim	7.5				7.5				0	0
J	Sleeve Length (Shoulder seam to cuff)	21.5				23.5				0.5	0.5
K	Sleeve opening -FLAT	19				21				0.25	0.25
L	Sleeve Underarm Length	11				13				0.5	0.5
M	Armhole Curve -FLAT	27				29				0.5	0.5

POM	POINTS TO MEASURE	S	V	R	Rev	L	V	R	Rev	Tol+	Tol-
1	Hem & Cuff	2				2				0	0

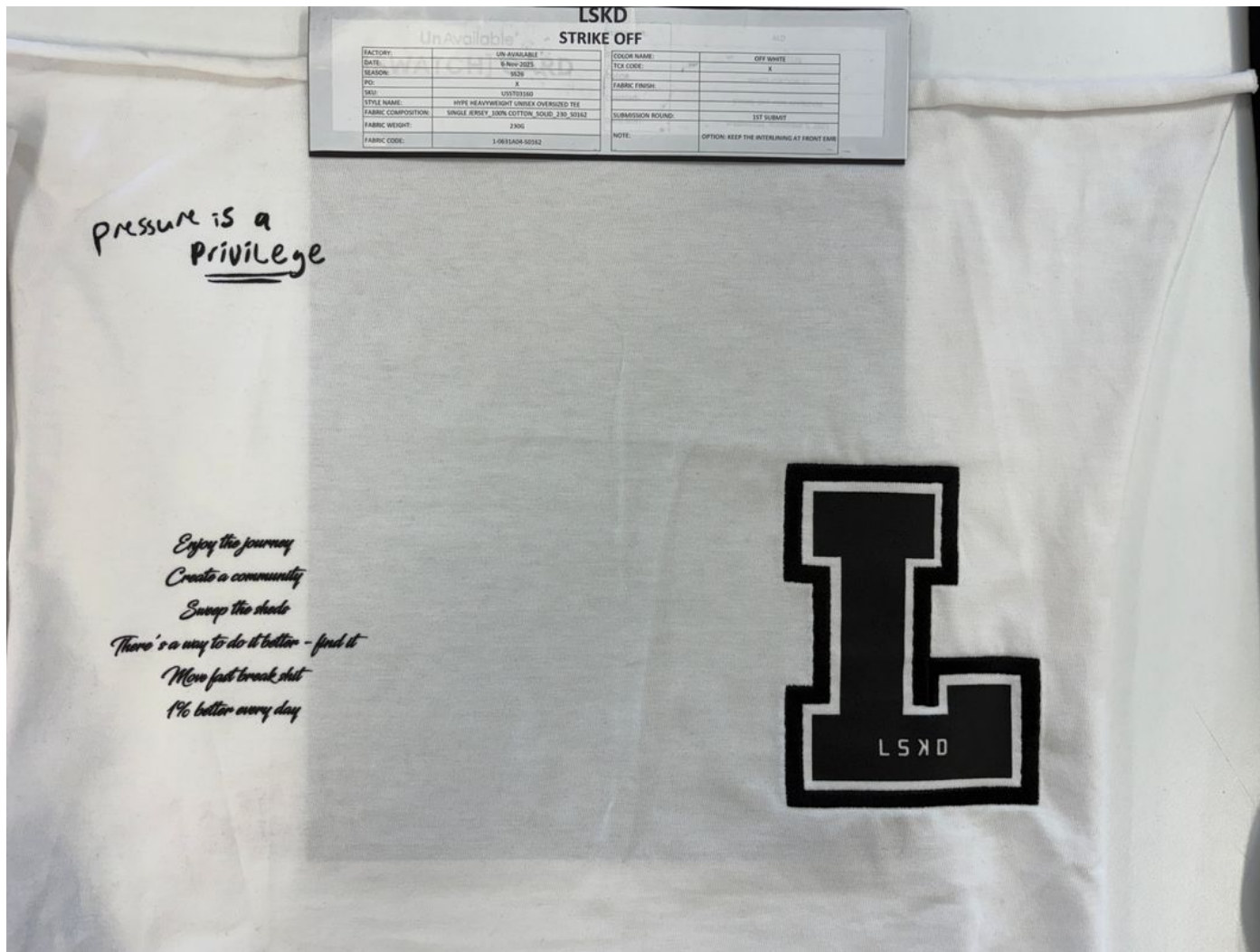
Sketch



Images



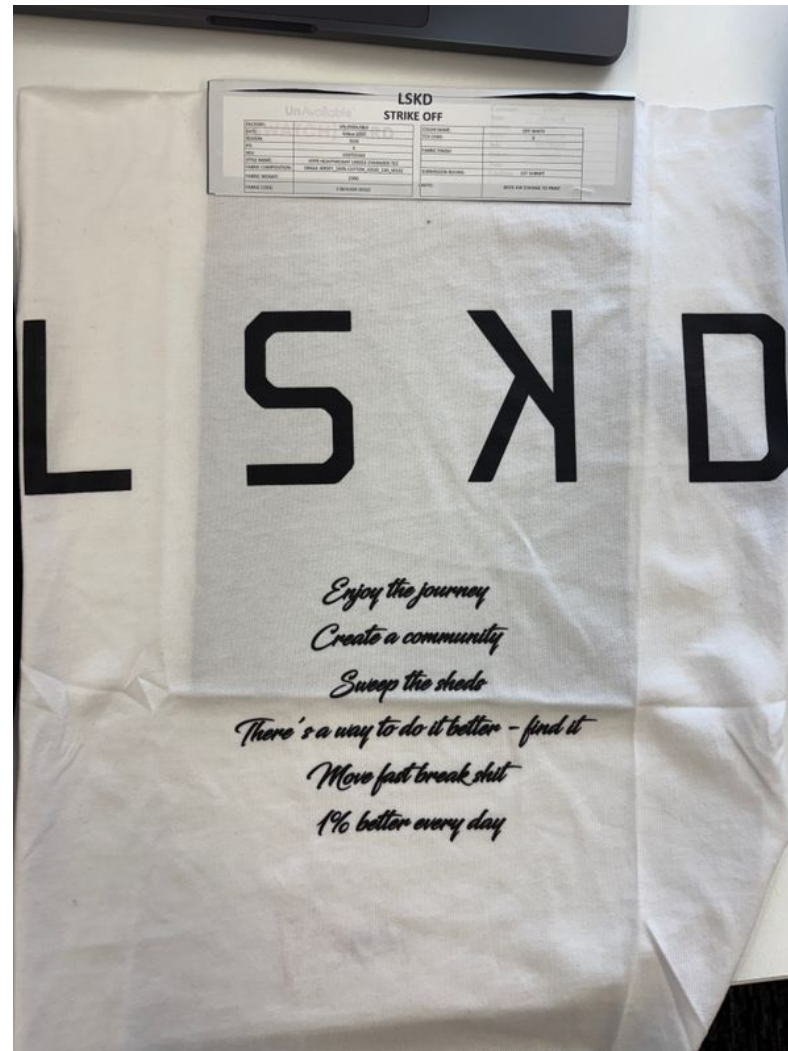
Images



Images



Images



Images

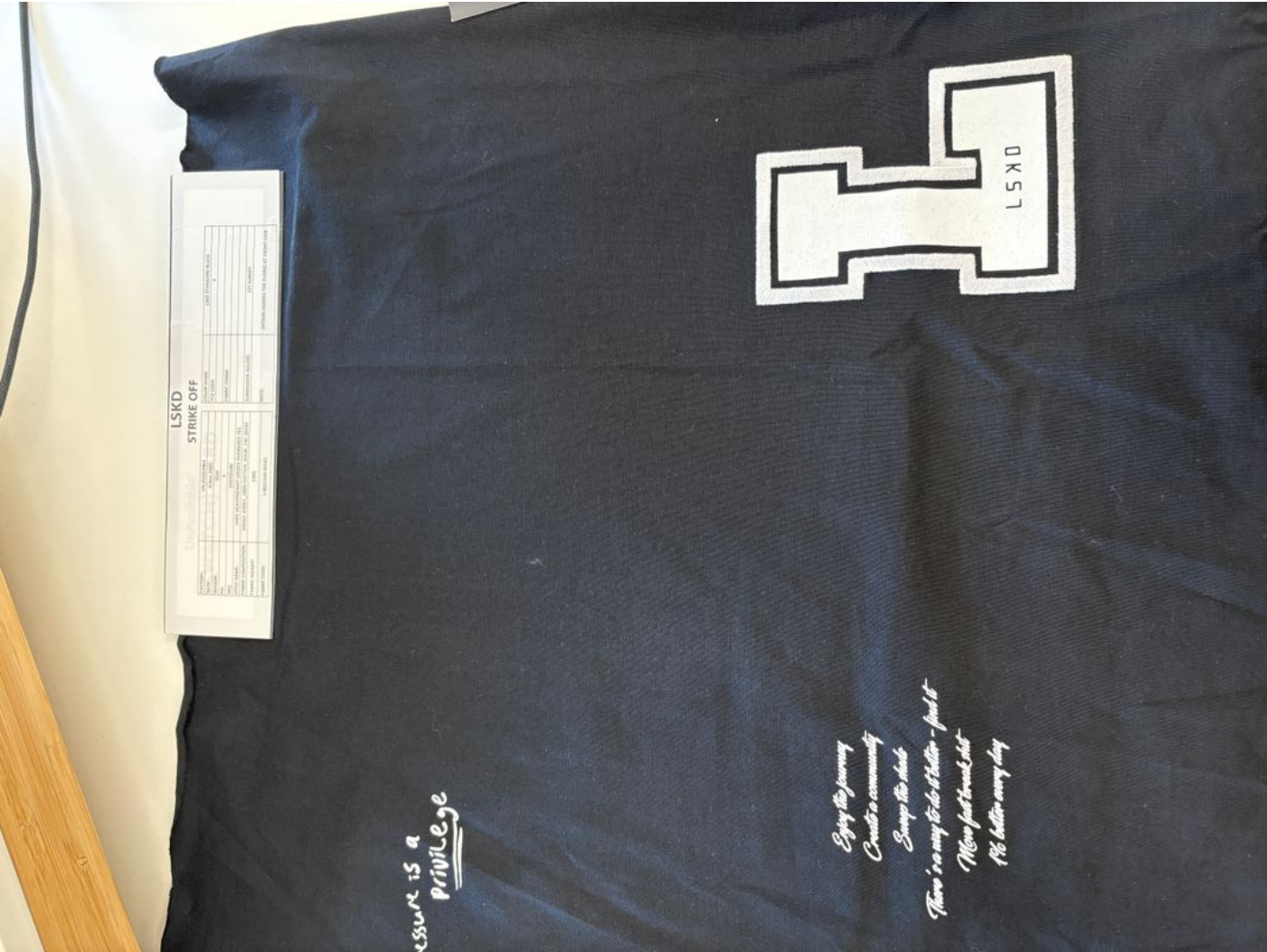


Images



fusing can be seen through fabric

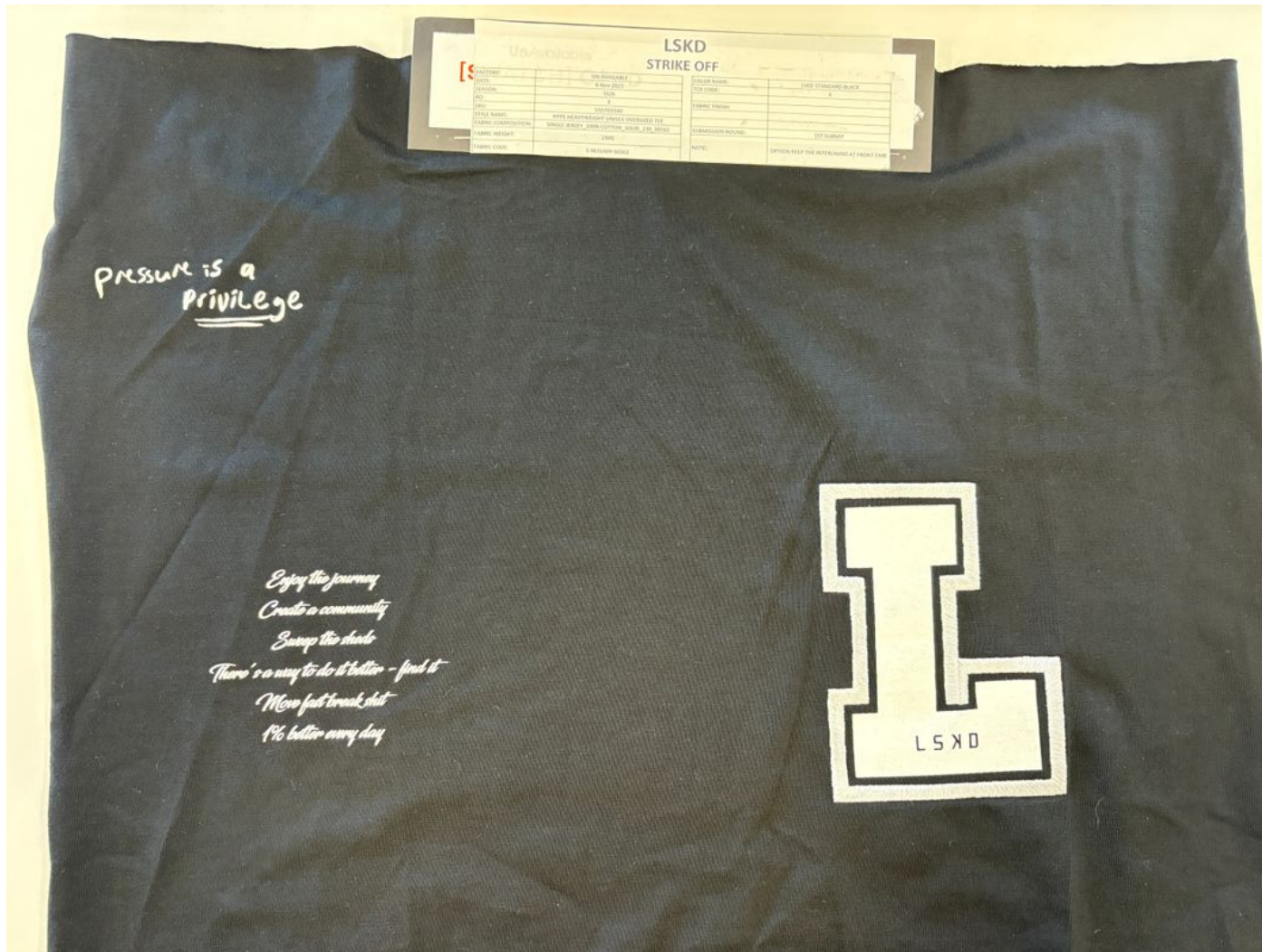
Images



Images



Images



Notes

Amelia Bosgra 11 Nov 2025 Updated by Amelia Bosgra 11 Nov 2025

BACK A/W

as per proto 2 comments "change LSKD plastisol infill to embroidery infill"

strike off is incorrect please change from plastisol fill to embroidery fill

FRONT A/W

We like the feel of fusing backing option however on the off-white colourway we are able to see the fusing through the fabric is there anyway to help minimise this? is it possible to trim backing?

Thank you!

- THÂN TRƯỚC: KHÁCH CHỌN OPTION CÓ ÉP KEO PHÍA SAU (OPTION 2) NHƯNG KEO CẦN CẮT GỌT LẠI THEO AW ĐỂ TRÁNH HIỆN LỖP KEO LÊN MẶT PHẢI
- THÂN SAU: AW CHỮ "LSKD" ĐỔI THÀNH THÊU TOÀN BỘ CHỮ
- CÁC AW CÒN LẠI APPROVE THEO S.O