

SAMPLE REPORT

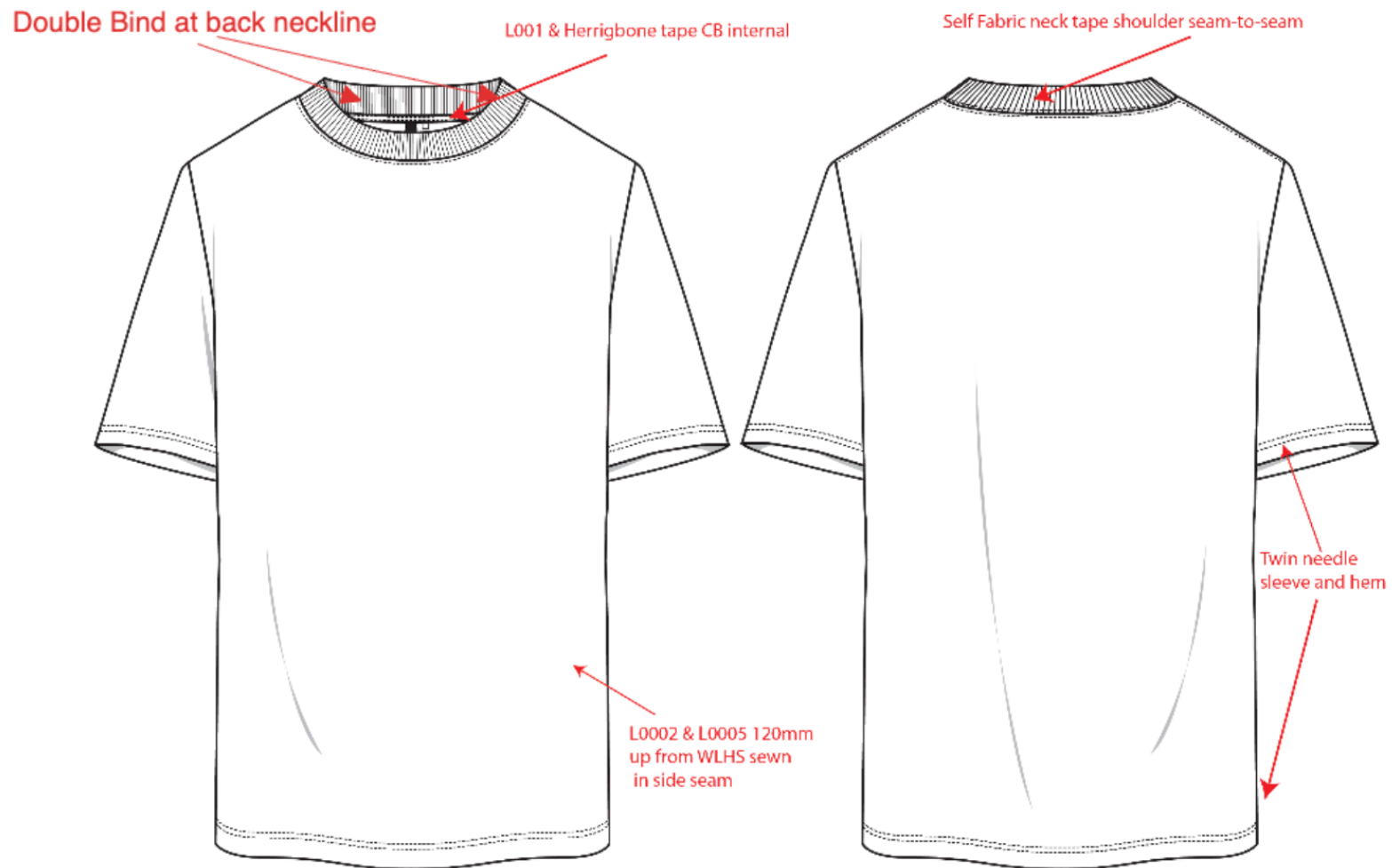
Description Club LSKD Value Heavyweight Oversized Tee**Report** Proto 1**Spec** UNISEX OVERSIZE 11A119**Unit** CM**Size** L**Status** App.nextround**Designer** Emma McNaughton**Colour** (BLK) Clr_Black**Agent****Factory** Un-Available Ltd

Specification

POM	POINTS TO MEASURE	L	V	R	Rev	Tol+	Tol-
A	Chest 2.5cm below armhole - FLAT	66.5	66.5			1.5	1.5
B	Sweep - FLAT	63	63			1.5	1.5
C	Shoulder Breadth	60	58	-2		2	2
D	Neck Width: Seam to Seam w/o trim	22.3	22.2	-0.1		0	0
E	Neck trim height (Rib)	3	3			0	0
F	FT neck depth from H.P.S w/o trim	11	11			0	0
G	BK neck depth from H.P.S w/o trim	3.5	3.5			0	0
H	Length from H.P.S. to Sweep	75.5	76	0.5		1.25	1.25
I	Shoulder slope w/o trim	7.5	7.5			0	0
J	Sleeve Length (Shoulder seam to cuff)	23.5	23.5			0.5	0.5
K	Sleeve opening -FLAT	21	21			0.25	0.25
L	Sleeve Underarm Length	13	13			0.5	0.5
M	Armhole Curve -FLAT	29	29			0.5	0.5

POM	POINTS TO MEASURE	L	V	R	Rev	Tol+	Tol-
1	Hem and cuff	2	2			0.25	0.25

Sketch





LSKD Pty Ltd
46 Burchill Street
Unit 2
Loganholme, Queensland, 4129
Australia

Phone:61738074442
Email:murilof@lskd.co

Style No. USST03364

Generated By 3 Clicks 23 Sep 2025
Page 3 of 13

Sketch

PLACEMENT

FRONT



BACK



Images



Images



artwork rippling fabric please improve quality

Images



Images



please adjust placement - please focus on centring large letters not whole artwork - as it makes it look off centre

Images

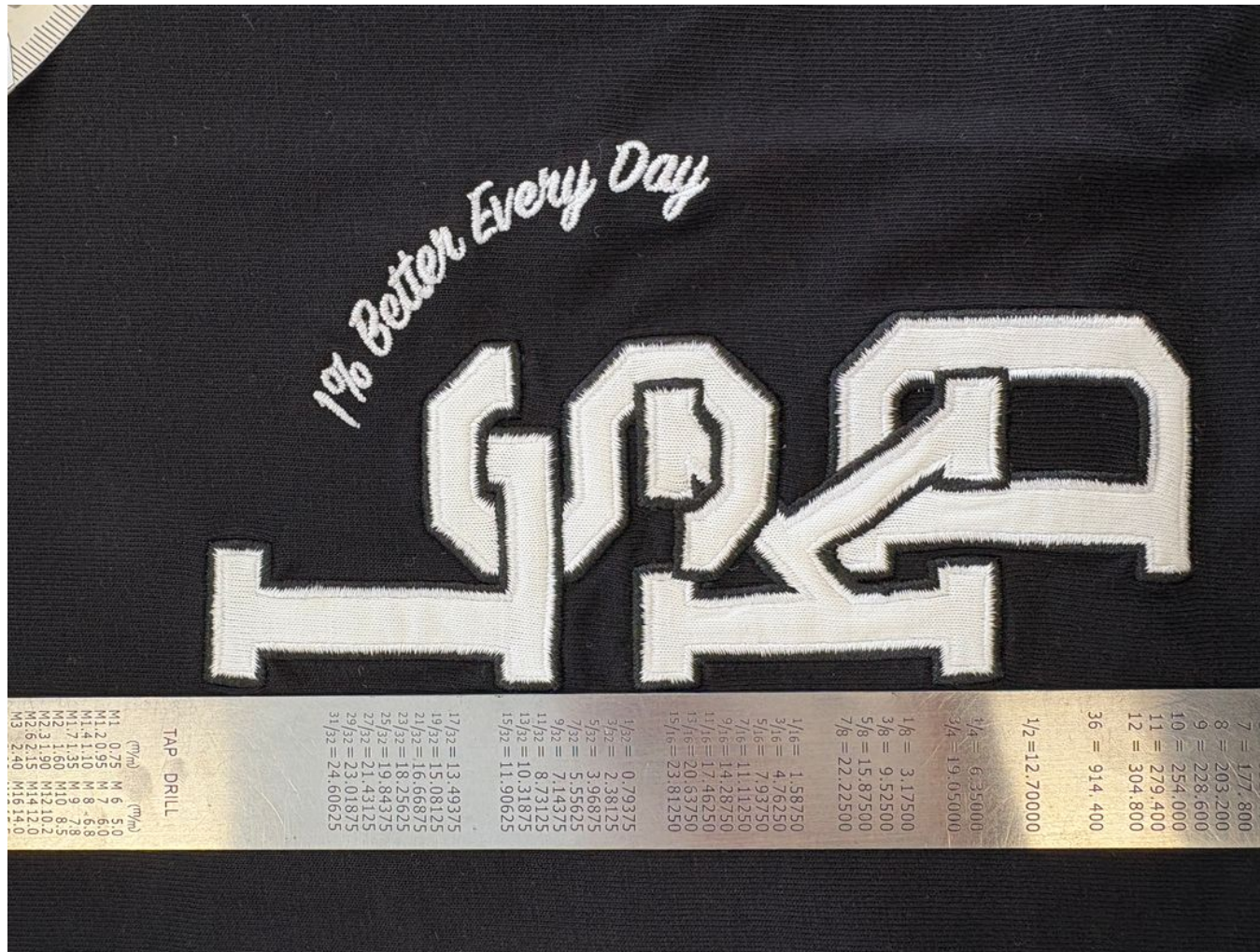


Please send second option of back artwork with white thread being chain stitch as per reference images

Images



Images



not straight please improve

Images



not straight pleaser improve

Images



Notes

Amelia Bosgra 22 Sep 2025 Updated by Amelia Bosgra 22 Sep 2025

Once updated artwork is shared please-
as second option send strike off of back artwork with white thread as chain stitch as per reference image

Back artwork

size approved- placement - adjust centre of back artwork - focus on large letters

Front print

size approved -

raise front placement by 2.5cm

can you please share cost of adding self fabric or lightweight single jersey as backing to large back embroidery to help with discomfort when wearing.

*send strike off for approval before moving onto next submission
thank you!

Simran Mackrani 18 Sep 2025

- quality of embroidery is poor, causing rippling
- redo artwork, ensure 'K' is backwards
- raise front print 2.5cm