

SAMPLE REPORT

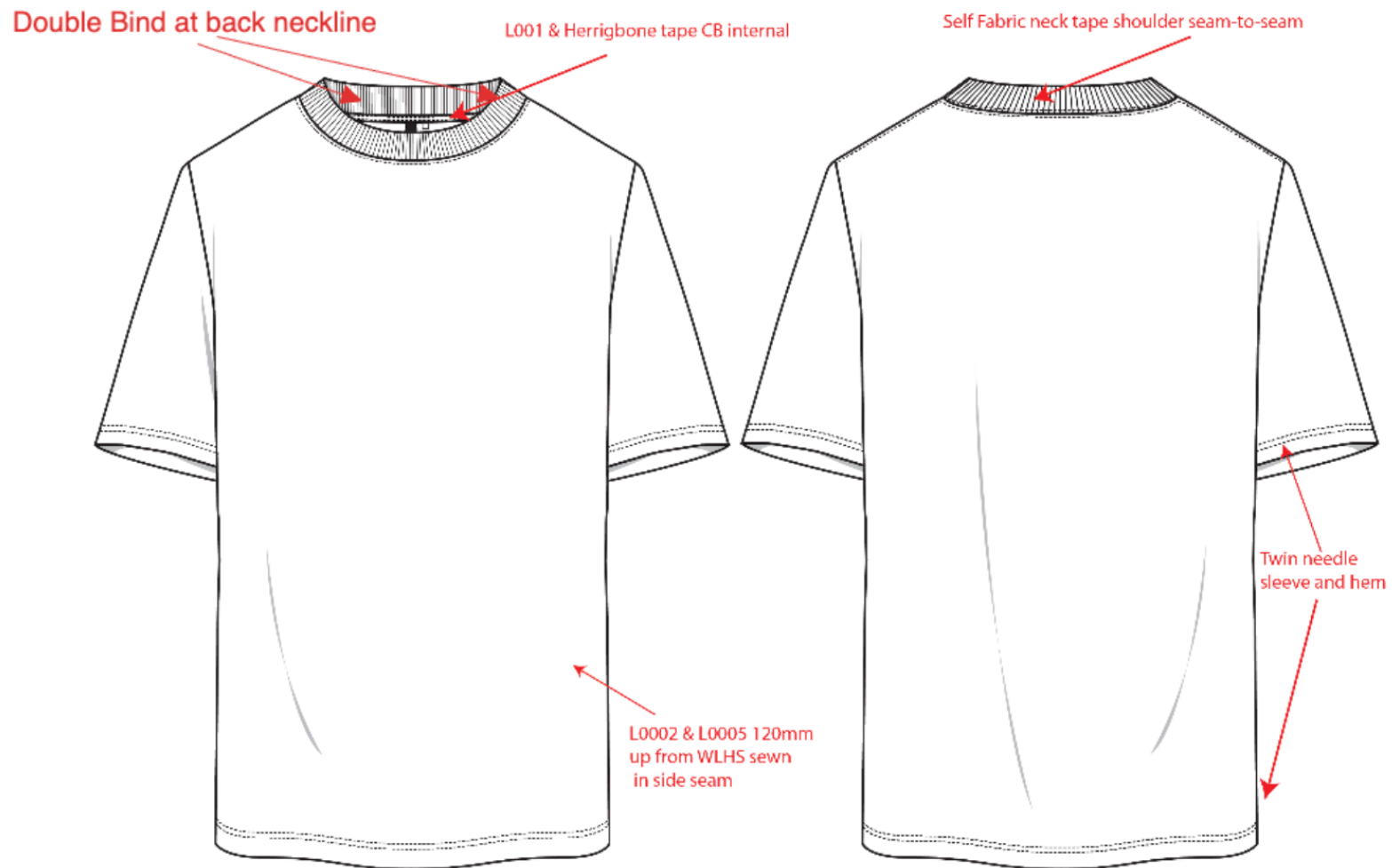
Description Club LSKD Heavyweight Oversized Tee**Report** Proto 1**Spec** UNISEX OVERSIZE 11A119**Unit** CM**Size** L**Status** App.nextround**Designer** Emma McNaughton**Colour** (WHI) White**Agent****Factory** Un-Available Ltd

Specification

POM	POINTS TO MEASURE	L	V	R	Rev	Tol+	Tol-
A	Chest 2.5cm below armhole - FLAT	66.5	66.5			1.5	1.5
B	Sweep - FLAT	63	62	-1		1.5	1.5
C	Shoulder Breadth	60	59.5	-0.5		2	2
D	Neck Width: Seam to Seam w/o trim	22.3	22.3			0	0
E	Neck trim height (Rib)	3	3			0	0
F	FT neck depth from H.P.S w/o trim	11	11			0	0
G	BK neck depth from H.P.S w/o trim	3.5	3.5			0	0
H	Length from H.P.S. to Sweep	75.5	75.5			1.25	1.25
I	Shoulder slope w/o trim	7.5	7.5			0	0
J	Sleeve Length (Shoulder seam to cuff)	23.5	23.5			0.5	0.5
K	Sleeve opening -FLAT	21	21			0.25	0.25
L	Sleeve Underarm Length	13	13			0.5	0.5
M	Armhole Curve -FLAT	29	29			0.5	0.5

POM	POINTS TO MEASURE	L	V	R	Rev	Tol+	Tol-
1	Hem and cuff	2	2			0.25	0.25

Sketch





LSKD Pty Ltd
46 Burchill Street
Unit 2
Loganholme, Queensland, 4129
Australia

Phone:61738074442
Email:murilof@lskd.co

Style No. USST03365

Generated By 3 Clicks 22 Sep 2025
Page 3 of 12

Sketch

FRONT



BACK



Images



Images



Images



Images



Images



updated artwork will fix artwork warping
ensuring letters all one size

Images



spacing found please improve

Images



Please ensure embroidery is straight

Images



warping of fabric

please try to reduce width of white thread

since its small artwork looks very busy
please try to ensure clean finish

Notes

Amelia Bosgra 19 Sep 2025 Updated by Amelia Bosgra 19 Sep 2025

Once updated artwork has been shared please apply comments and share revised strike off for review.

Front print -

size measurements and placement approved

please send strike off with correct thread colours for review

please if possible try to make white thread thinner in order to see self fabric more.

some warping of fabric around letters please improve

Back print

Please share cost of adding self fabric backing or lighter single jersey backing suggestion to the large back embroidery to assist with discomfort when wearing.

placement approved - sizing will be adjusted with updated artwork

please share revised with correct colours for review

fabric warping around artwork

please ensure embroidery is straight

spacing found in embroidery as circled in images please improve

Thank you!

Amelia Bosgra 18 Sep 2025 Updated by Amelia Bosgra 19 Sep 2025

Updated artwork will follow as below shortly.

Please share two options strike offs for review.

Option 1: club script reduce width and move down to be half in print - half below print

Option 2: keep club script same width move down to be half in print - half below print

Thank you!

Simran Mackrani 18 Sep 2025

TRIMS AND BRANDING

- Revise artwork: K needs to be flipped

-back artwork is warped, needs revision

- word 'Club' is not visible