
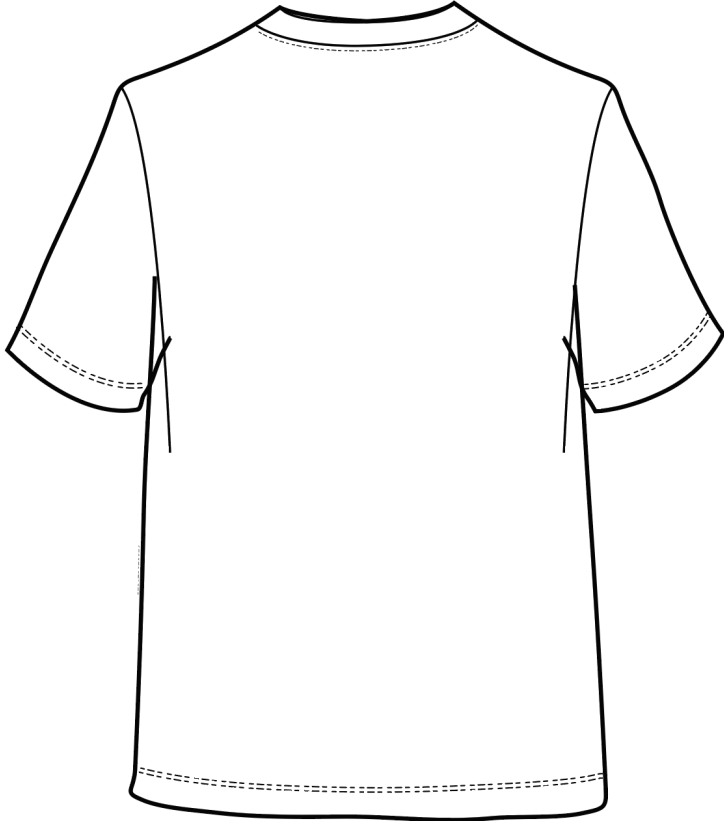
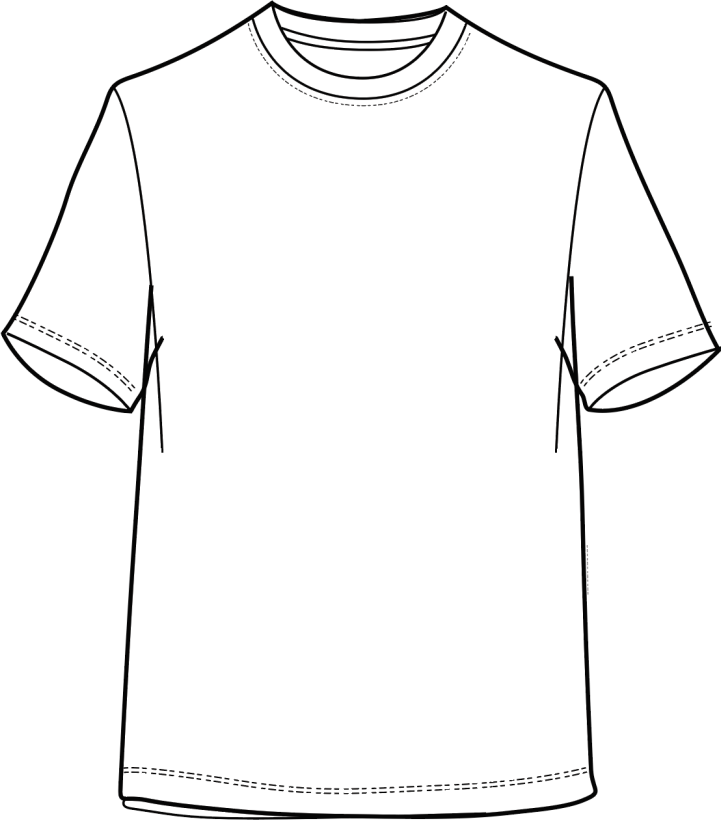

	Dev Style Name: HQ6124 - M NRG SOLO SWOOSH TEE VAN			Badge & Borrow Style:	Chassis Dev Name:	Season: SU24	Nike Tech Developer:
	Category: CATALYST		Sub Category: COLLABORATIONS	Development Team: CATALYST	Production Factory:		Nike Product Developer:
	Fit Intent: STANDARD	Gender: Male	Age: ADULT	Development Size Range: 2XS-4XL, S/S-4XL/S, S/T-4XL/T, S/TT-4XL/TT, CUST	Retail Size Range: XS,S,M,L,XL,2XL	Style Source Fit Approval State: Initiated	

TABLE OF CONTENTS	
Content List	Last Updated
001 : - HQ6113 - M NRG SOLO SWOOSH HOODIE VAN - Tech III -	12/08/2023 04:14 AM GMT
001 : HQ6124- MEASUREMENTS	12/08/2023 04:11 AM GMT



	Dev Style Name: HQ6124 - M NRG SOLO SWOOSH TEE VAN			Badge & Borrow Style:	Chassis Dev Name:	Season: SU24		Nike Tech Developer:
	Category: CATALYST		Sub Category: COLLABORATIONS	Development Team: CATALYST	Production Factory:			Nike Product Developer:
	Fit Intent: STANDARD	Gender: Male	Age: ADULT	Development Size Range: 2XS-4XL, S/S-4XL/S, S/T-4XL/T, S/TT-4XL/TT, CUST		Retail Size Range: XS,S,M,L,XL,2XL		Style Source Fit Approval State: Initiated



	Dev Style Name: HQ6124 - M NRG SOLO SWOOSH TEE VAN			Badge & Borrow Style:	Chassis Dev Name:	Season: SU24		Nike Tech Developer:		
	Category: CATALYST		Sub Category: COLLABORATIONS		Development Team: CATALYST		Production Factory:		Nike Product Developer:	
	Fit Intent: STANDARD	Gender: Male	Age: ADULT	Development Size Range: 2XS-4XL, S/S-4XL/S, S/T-4XL/T, S/TT-4XL/TT, CUST			Retail Size Range: XS,S,M,L,XL,2XL		Style Source Fit Approval State: Initiated	

Measurement Set: 001 : HQ6124- MEASUREMENTS Sample Size: M UOM: cm Grade Rule Template: Western Mens Knit/Woven											
Meas. Code	Point of Measurement Name	How To Measure Instructions	POM Criticality	Tolerance (-)	Tolerance (+)	XS	S	M	L	XL	2XL
NK_FH	Neck Finish Height at CB	Edge to seam or stitch, vertical	Critical POM	0.3	0.3	2.5	2.5	2.5	2.5	2.5	2.5
NK_WBH	Back Neck Width (from HPS)	HPS to HPS, horizontal	Critical POM	1.0	1.0	16.2	17.0	17.0	17.9	18.8	19.7
NK_DBH	Back Neck Drop (from HPS)	HPS to back neck, vertical	Critical POM	0.5	0.5	1.7	2.0	2.0	2.1	2.2	2.3
NK_DFH	Front Neck Drop (from HPS)	HPS to front neck, vertical	Critical POM	0.5	0.5	9.7	10.0	10.0	10.6	11.2	11.8
NK_OM	Neck Opening (Minimum, Over Head)	Stretched to meet or exceed target	Critical Safety	0.0	99.0	29.5	30.5	30.5	30.5	30.5	30.5
SH_WD_S	Shoulder Width (Set-In/Sivless)	Shoulder point to point, horizontal	Critical POM	1.5	1.5	51.2	52.6	54.0	55.4	57.8	60.2
BL_BN_2	Body Length (from Back Neck, Standard length)	CB neck to bottom edge, vertical	Critical POM	1.5	1.5	69.5	70.5	71.5	73.5	75.5	77.5
CH_WS	Chest Width (Set-In/Raglan/Tank)	2.5cm below underarm, horizontal	Critical POM	1.5	1.5	48.0	52.0	56.0	60.0	65.0	70.0
SL_LTS_2	Sleeve Length (fm Shldr Pt, Standard Short Slv)	Shoulder point to bottom sleeve edge	Critical POM	1.0	1.0			22.0			
SL_UWS	Upper Sleeve Width (Set-in/Raglan)	2.5cm below underarm	Critical POM	1.0	1.0	23.5	24.0	24.5	25.5	27.1	28.7
SL_OR_1	Slv Opening (Relaxed/Flat, Elbow or Shorter)	Inner edge to edge	Critical POM	1.0	1.0	20.0	20.5	21.0	22.0	23.6	25.2
BH_OR	Bottom Opening (Relaxed/Flat)	Inner edge to edge	Critical POM	1.5	1.5	48.0	52.0	56.0	60.0	65.0	70.0