








Article Summary										Version 1		
	Article Code	M-0325-KT-6101			FRENCH TERRY 100%COTTON WITH DRY HANDFEEL AND WASH (FB-K1311) CM30/1 + 20/1+ 10CD			Product Group	TOP			
	Article Name	CAMO HOODIE						Product Sub-Category	HOODIE-DO NOT USE			
	Created On	09-10-2024 3:17:43 PM						Season	2025 Fall			
	Last Modified	04-10-2025 5:12:20 PM						Life Cycle Stage	Pre-Production			
Gender Classification		Mens		Sub Class D		PULLOVER		Fabrication		KNIT TOP		
Supplier		UN-AVAILABLE CO. LTD		Release Date		07 Nov 2025		Ex-Factory		15 Aug 2025		
										COLORS		
											BLACK (BK) BLACK	
											CAMO (CM) CAMO	
SIZES												
000, 001, 002, 003, 004, 005, 006, 007, XXS, XS, SM, MD, LG, XL, 2X, 3X, 4XL, 008												



Bill of Materials											Version 1
	Article Code	M-0325-KT-6101					Product Group	TOP			
	Article Name	CAMO HOODIE					Product Sub-Category	HOODIE-DO NOT USE			
	Created On	09-10-2024 3:17:43 PM	Material	FRENCH TERRY 100%COTTON WITH DRY HANDFEEL AND WASH (FB-K1311) CM30/1 + 20/1+ 10CD			Season	2025 Fall			
	Last Modified	04-10-2025 5:12:20 PM	Description				Life Cycle Stage		Pre-Production		
Part	Material		Placement		Qty.	UOM.	Comments	Supplier	Supplier Ref.	BK BLACK Aug Ex factory3	CM CAMO Aug Ex factory3
Fabric											
	FRENCH TERRY 100%COTTON WITH DRY HANDFEEL AND WASHING (CM30/1+20/1+10CD) 400GSM (FB-K1311) CM30/1 + 20/1+ 10CD  P19-4321: FRENCH TERRY 100%COTTON WITH DRY HANDFEEL AND WASHING (CM30/1+20/1+10CD) 400GSM		BODY/ HOOD/ SLV		0	Meter	AOP		P19-4321	None	None
	JERSEY - 100C - 180 GSM (FB-K122) 100% COTTON, 180 GSM		POCKET BAG, KNUCKLE SIDE		0	Meter	DTM GROUND			BLACK BK BLACK	DYED TO MATCH BODY DTMB
	JERSEY - 100C - 180 GSM (FB-K122) 100% COTTON, 180 GSM		BACK NECK TAPE		0	Meter	BACK NECK TAPE WILL BE COLOUR LINT FOR CAMO COLOURWAY			BLACK BK BLACK	CAMO CM CAMO
Trims											
	OVO 2023 One Side Main Label (TR-LT247) RECA REF: LBOVO172				1	Each		Reca Mainetti Asia Ltd	LBOVO172	None	None
	OVO 2023 Alpha Sizing Tab (TR-LT246) ARTICLE: OVOW23_181_T/ LBOVO175				1	Each		Reca Mainetti Asia Ltd	LBOVO175	None	None
	TEAR-AWAY COO TAB: OVOF21_217_T (LT138) COUNTRY OF ORIGIN TAB				1	Each		Reca Mainetti Asia Ltd	OVOF21_217_T	None	None
	5mm GROSGRAIN RIBBON LOOP (TR-TV140) FOR HANGTAG ATTACHMENT				1	Each		Vendor Sourced		None	None
	OVO 2023 Booklet Hangtag (TR-HG142) Article code: HTOVO141A				1	Each		Reca Mainetti Asia Ltd	HTOVO141A	None	None
	CC LABEL - APPAREL (LT110) White Satin ground, Black text COO, Content, and Care Instructions may vary by style.				1	Each		Vendor Sourced		None	None
	POLY BAG - GENERIC (PK101) Clear Plastic, with suffocation warning on back, UPC sticker placement on bottom right corner of bag.				1	Each		Vendor Sourced		None	None
	UPC STICKER- 1" X 2.5" (TR-ST114) PLEASE PRINT WITH THERMAL PRINTER				2	Each				None	None


Bill of Materials											Version 1
	Article Code	M-0325-KT-6101					Product Group	TOP			
	Article Name	CAMO HOODIE					Product Sub-Category	HOODIE-DO NOT USE			
	Created On	09-10-2024 3:17:43 PM	Material	FRENCH TERRY 100%COTTON WITH DRY HANDFEEL AND WASH (FB-K1311) CM30/1 + 20/1+ 10CD			Season	2025 Fall			
	Last Modified	04-10-2025 5:12:20 PM	Description				Life Cycle Stage		Pre-Production		
Part	Material		Placement		Qty.	UOM.	Comments	Supplier	Supplier Ref.	BK BLACK Aug Ex factory3	CM CAMO Aug Ex factory3
	SHOCK CORD - 3MM (TR-TRIM-SC) CINCH CORD: 3MM SHOCK CORD * PLS SUBMIT FOR APPROVAL *		AT HOOD, BOTTOM HEM		2	Each	submit for qlty and size approval	Vendor Sourced		BLACK BK BLACK	BLACK BK BLACK
	BEAD (HD126) BEAD, SAME QUALITY AS S20-WT-121 - NYLON PACKABLE JACKET				3	Each		Vendor Sourced		BLACK BK BLACK	BLACK BK BLACK
	GROMMET WITH MATTE FINISH (HD113)		AT ALL SHOCK CORD EXITS		0	Each	ENAMEL COATED BLACK, 18L tbd - submit for size approval	Vendor Sourced		BLACK BK BLACK	BLACK BK BLACK
	SMALL PLASTIC PIGNOSE STOPPER (HD176) SEE PHOTO		AT HOOD, BOTTOM HEM		3	Each	pls submit size for approval and style	Vendor Sourced		BLACK BK BLACK	BLACK BK BLACK
	GROSSGRAIN TAPE- (TV131)		AT HOOD TO HOLD BUNGEECORD		2	Centimeter	BLACK COLOUR FOR BOTH COLOURWAYS- 3/8" WIDE -TBD- PLS SUBMIT FOR SIZE /QLTY APPROVAL. POLYESTER, HERRINGBONE TAPE.			None	None
Graphics											
	TBD - SEE ARTWORK FILE (HT-102)				0	Each				None	None

Bill of Materials Material Image Sheet						Version 1
	Article Code	M-0325-KT-6101		Product Group	TOP	
	Article Name	CAMO HOODIE		Product Sub-Category	HOODIE-DO NOT USE	
	Created On	09-10-2024 3:17:43 PM		Season	2025 Fall	
	Last Modified	04-10-2025 5:12:20 PM		Life Cycle Stage	Pre-Production	
			Material Description	FRENCH TERRY 100%COTTON WITH DRY HANDFEEL AND WASH (FB-K1311) CM30/1 + 20/1+ 10CD		
 FB-K1311 FRENCH TERRY 100%COTTON WITH DRY HANDFEEL AND WASHING (CM30/1+20/1+10CD) 400GSM	 TR-LT247 OVO 2023 One Side Main Label	 TR-LT246 OVO 2023 Alpha Sizing Tab	 LT138 TEAR-AWAY COO TAB: OVOF21_217_T	 TR-TV140 5mm GROSGRAIN RIBBON LOOP	 TR-HG142 OVO 2023 Booklet Hangtag	
 LT110 CC LABEL - APPAREL	 PK101 POLY BAG - GENERIC	 TR-ST114 UPC STICKER- 1" X 2.5"	 TR-TRIM-SC SHOCK CORD - 3MM	 HD126 BEAD	 HD113 GROMMET WITH MATTE FINISH	
 HD176 SMALL PLASTIC PIGNOSE STOPPER						

RIB AOP EXAMPLE						Version 1
Article Code	M-0325-KT-6101		FRENCH TERRY 100% COTTON WITH DRY HANDFEEL AND WASH (FB-K1311) CM30/1 + 20/1+ 10CD	Product Group	TOP	
Article Name	CAMO HOODIE			Product Sub-Category	HOODIE-DO NOT USE	
Created On	09-10-2024 3:17:43 PM	Material		Season	2025 Fall	
Last Modified	04-10-2025 5:12:20 PM	Description		Life Cycle Stage	Pre-Production	

EXAMPLE OF PRINTED  
FRENCH TERRY, RIB AND  
WASH



UPDATED UPC LAYOUT -SEPT 2024						Version 1
Article Code	M-0325-KT-6101			Product Group	TOP	
Article Name	CAMO HOODIE			Product Sub-Category	HOODIE-DO NOT USE	
Created On	09-10-2024 3:17:43 PM			Season	2025 Fall	
Last Modified	04-10-2025 5:12:20 PM			Life Cycle Stage	Pre-Production	
		Material Description	FRENCH TERRY 100%COTTON WITH DRY HANDFEEL AND WASH (FB-K1311) CM30/1 + 20/1+ 10CD			



OCTOBER'S VERY OWN

UPC INFORMATION

STYLE # : M-0421-KT-1117  
SIZE : MD (03)  
COLOUR : BLACK (BK)  
PRODUCT CODE : KNIT TOP  
DIVISION : MENS  
SKU : M-0421-KT-1117-BK-03

COLOUR AND SIZE CODE ARE INCLUDED IN THE UPC CODE AND BARCODE.

DIVISON                      PRODUCT CODE                      COLOUR CODE  
┌───┐                      ┌───┐                      ┌───┐  
M-0421-KT-1117-BK-03  
└───┘                      └───┘                      └───┘  
QUATER/YEAR                      STYLE                      SIZE

STICKER PLACEMENT  
(2 PER GARMENT)

DIMENSIONS


UPC STICKER#1  
PLACE ON BOTTOM RIGHT  
CORNER OF POLY BAG.

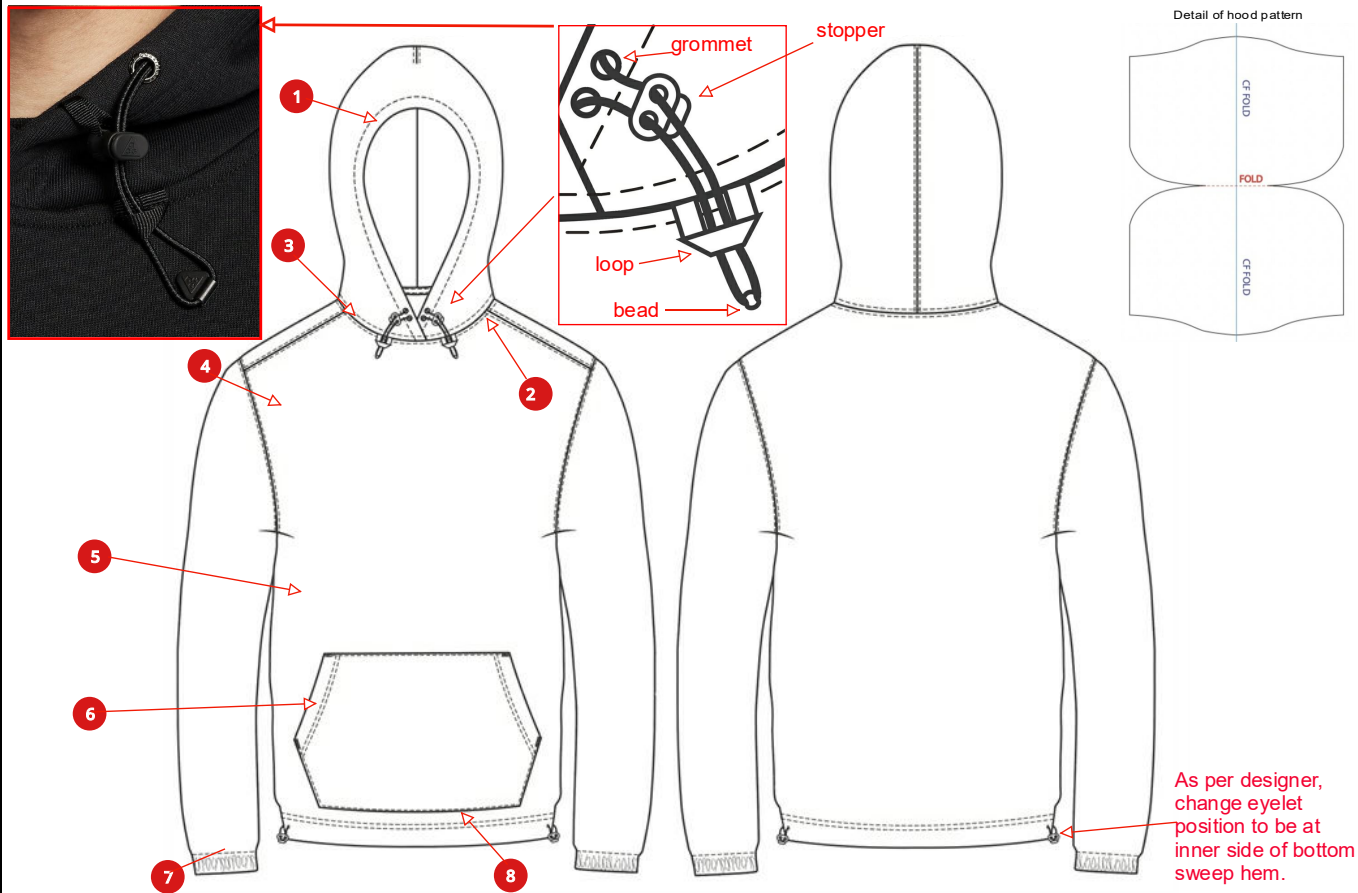
UPC STICKER #2  
PLACE INSIDE HANGTAG BOOKLET



ROUNDED CORNERS




Construction details - Hoodie Rib panel - UNAVAILABLE							Version 1
	Article Code	M-0325-KT-6101		FRENCH TERRY 100%COTTON WITH DRY HANDFEEL AND WASH (FB-K1311) CM30/1 + 20/1+ 10CD	Product Group	TOP	
	Article Name	CAMO HOODIE			Product Sub-Category	HOODIE-DO NOT USE	
	Created On	09-10-2024 3:17:43 PM			Season	2025 Fall	
	Last Modified	04-10-2025 5:12:20 PM			Life Cycle Stage	Pre-Production	
		Material Description					

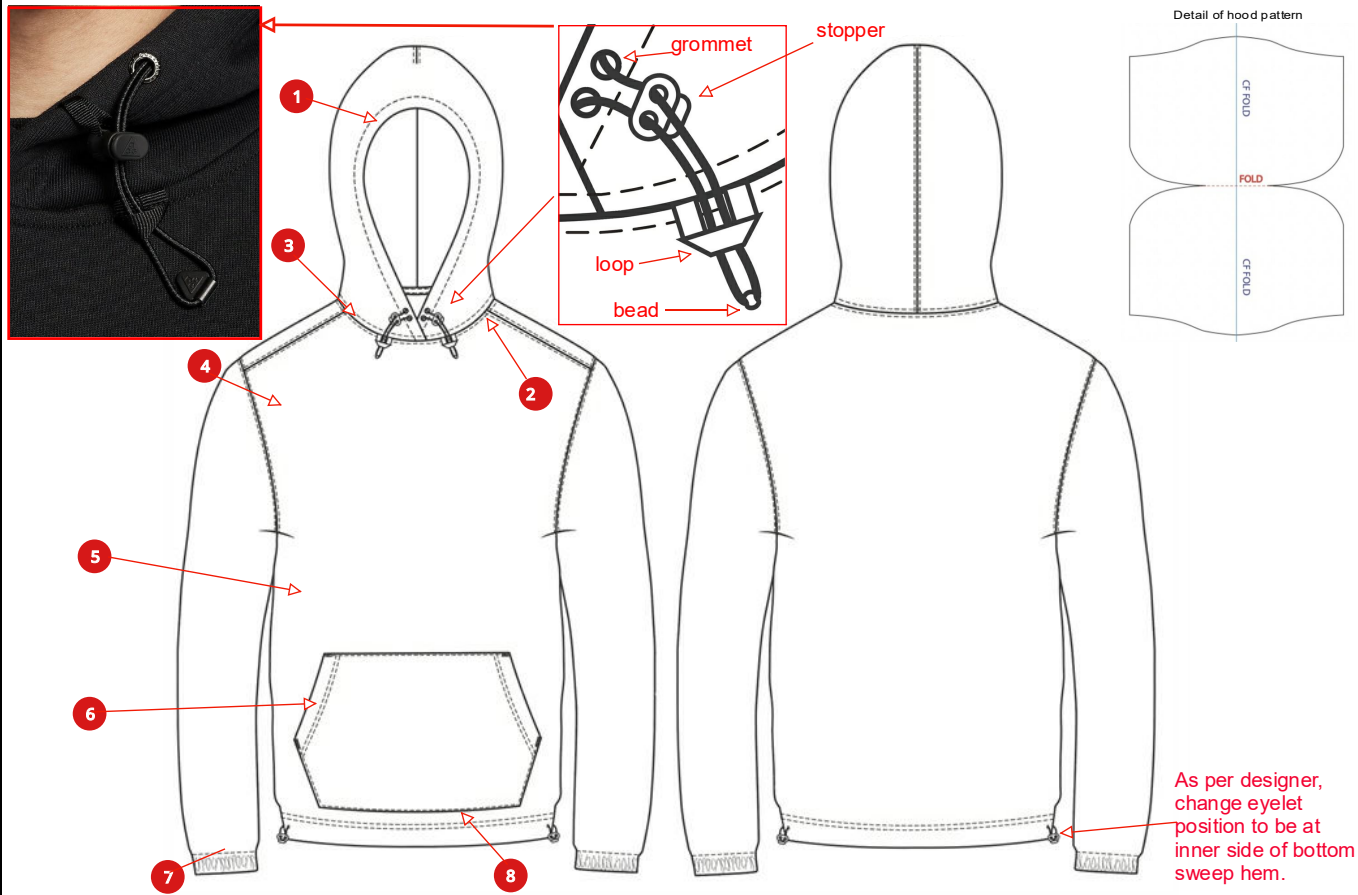


## Comments

- HOOD**  
1 piece hood with self lining. Fold at CF edge. Dart at CB, join with #512 mock safety stitch. Please ensure that the hood self and hood lining serged seperately. 2NDL C/S, straddle seam. CF of hood overlapping at the neck 3/4", left over right. SN T/S at front edge to make channel for drawcord. Bungee cord encased in band, grommet DC exits at exterior side seam on both sides. Stopper at center of bungee, bead at end to hold cord. Herringbone tape loop at neck seam to hold down cord with bead.  
  
Self and lining chain tacked at the top of the head at CB dart seams. Please tack 3/8" at hood crown together.
- NECK SEAM**  
Hood join to body with #512 mock safety stitch. Inside back neck cleanfinished with jersey taping. SN TS at taping edges. 1/4" in, visible at back neck. 2NDL C/S on front and back neck, straddle seams. Herringbone tape loop at neck seam to hold down cord with bead.
- SHOULDER SEAM**  
Set forward on body. Join with #512 mock safety stitch. 2N coverstitch straddling seam, 1/4" spacing.
- ARMHOLE SEAM**  
Join with #512 mock safety stitch. 2N coverstitch straddling seam, 1/4" spacing.
- SLEEVE/ SIDE SEAM**  
Join in one operation. #512 mock safety stitch.
- KANGA POCKET**  
Self pocket bag. Opening edges turned in, 2N coverstitch to form hem, 1/4" spacing. Side, bottom and top edges serged and turned in. SN topstitched to body. Bartacks at top and bottom of pkt openings. 03.10.2025: Reinforce pocket opening corners with Jersey fabric.
- SLEEVE OPENING**  
Self turn up to form hem, #512 mock safety stitch with SN TOPSTITCH. elastic encased in band,
- BOTTOM OPENING**  
Self turn up to form hem, 2N coverstitch, 1/4" width. Bungee





Construction details - Hoodie Rib panel - UNAVAILABLE						Version 1
Article Code	M-0325-KT-6101	Material Description	FRENCH TERRY 100%COTTON WITH DRY HANDFEEL AND WASH (FB-K1311) CM30/1 + 20/1+ 10CD	Product Group	TOP	
Article Name	CAMO HOODIE			Product Sub-Category	HOODIE-DO NOT USE	
Created On	09-10-2024 3:17:43 PM			Season	2025 Fall	
Last Modified	04-10-2025 5:12:20 PM			Life Cycle Stage	Pre-Production	



cord encased in band, grommet DC exits at exterior side seam on both sides.

As per designer, change eyelet position to be at inner side of bottom sweep hem.

Measurement - Hoodie - Rib side panel										All Measurements are in Inches				Version 1			
	Article Code	M-0325-KT-6101		FRENCH TERRY 100%COTTON WITH DRY HANDFEEL AND WASH (FB-K1311) CM30/1 + 20/1+ 10CD						Product Group		TOP					
	Article Name	CAMO HOODIE								Product Sub-Category		HOODIE-DO NOT USE					
	Created On	09-10-2024 3:17:43 PM	Material Description							Season		2025 Fall					
	Last Modified	04-10-2025 5:12:20 PM								Life Cycle Stage		Pre-Production					
POM	Description		+ Tol	- Tol	Grade	XXS	XS	S	M	L	XL	XXL	3XL				
⚠ A201	Front body length from HPS : Top		1/2	1/2	NA	26 1/2	27	27 1/2	28	28 1/2	29 1/2	30 1/2	31 1/2				
⚠ H101	Neck width :: SEAM TO SEAM		1/4	1/4	NA	9	9	9 1/4	9 1/2	9 3/4	10	10 1/4	10 1/2				
⚠ H201	Front neck drop from HPS : Crew		1/8	1/8	NA	3 3/8	3 3/8	3 7/16	3 1/2	3 9/16	3 11/16	3 13/16	3 15/16				
H301	Back neck drop from HPS Crew		1/8	1/8	NA	7/8	7/8	15/16	1	1 1/16	1 3/16	1 5/16	1 7/16				
⚠ D102	Shoulder slope :: from HPS		1/8	1/8	NA	2 3/8	2 7/16	2 1/2	2 1/2	2 1/2	2 9/16	2 5/8	2 11/16				
D103	Shoulder displacement to front		1/8	1/8	NA	3/4	3/4	3/4	3/4	3/4	3/4	3/4	3/4				
⚠ D101	Shoulder width :measured on CB body		3/8	3/8	NA	20 1/4	21	21 3/4	22 1/2	23 1/4	24 1/4	25 1/4	26 1/4				
⚠ B301	Across: Chest : at mid. armhole		1/4	1/4	NA	18 1/4	19	19 3/4	20 1/2	21 1/4	22 1/4	23 1/4	24 1/4				
⚠ B201	Across Back : at mid. armhole		1/4	1/4	NA	18 3/4	19 1/2	20 1/4	21	21 3/4	22 3/4	23 3/4	24 3/4				
⚠ B101	Chest width :1" below armhole		1/2	1/2	NA	21 1/2	22 1/2	23 1/2	24 1/2	25 1/2	27	28 1/2	30				
⚠ C101	Bottom width at hem:inside fold edges of hem		1/2	1/2	NA	20 1/2	21 1/2	22 1/2	23 1/2	24 1/2	26	27 1/2	29				
⚠ E101	Armhole Straight :: measured straight		1/4	1/4	NA	10 3/8	10 3/4	11 1/8	11 1/2	11 7/8	12 3/8	12 7/8	13 3/8				
⚠ G101	Bicep width:1" below armhole		1/4	1/4	NA	9 3/4	10	10 1/4	10 1/2	10 3/4	11 1/16	11 3/8	11 11/16				
⚠ F101	L:Sleeve overarm fr. CB neck :: 3 x point measure		1/2	1/2	NA	33 1/4	34	34 3/4	35 1/2	36 1/4	37 1/4	38 1/4	39 1/4				
⚠ G104	L/Sleeve opening: inside fold edges of cuff/hem		1/8	1/8	NA	3 7/16	3 5/8	3 13/16	4	4 3/16	4 7/16	4 11/16	4 15/16				
⚠ G103	L/Sleeve :: 1" above cuff seam		1/4	1/4	NA	5 7/16	5 5/8	5 13/16	6	6 3/16	6 7/16	6 11/16	6 15/16				
F701	Sleeve hem Height		1/8	1/8	NA	1	1	1	1	1	1	1	1				
A703	Body hem Height		1/8	1/8	NA	1	1	1	1	1	1	1	1				
H708	Hood casing width :: at CF		1/8	1/8	NA	1	1	1	1	1	1	1	1				
⚠ H703	Hood width :: at 5" Below Top Edge		1/4	1/4	NA	10 3/4	11	11 1/4	11 1/2	11 3/4	12	12 1/4	12 1/2				
⚠ H701	Hood height at CF		1/4	1/4	NA	14	14 1/2	14 1/2	15	15	15 1/2	15 1/2	15 1/2				
H702	Hood height at HPS		1/4	1/4	NA	13	13 1/2	13 1/2	14	14	14 1/2	14 1/2	14 1/2				
⚠ N101	Kanga pocket height at center		1/4	1/4	NA	8 1/4	8 1/2	8 1/2	8 3/4	8 3/4	9 1/4	9 1/4	9 1/2				
⚠ N102	Kanga pocket width at top edge		1/4	1/4	NA	9 1/4	9 1/2	9 1/2	9 3/4	9 3/4	10 1/4	10 1/4	10 1/2				
⚠ N103	Kanga pocket width at widest point		1/4	1/4	NA	13 1/4	13 1/2	13 1/2	13 3/4	13 3/4	14 1/4	14 1/4	14 1/2				
⚠ N104	Kanga pocket width at BOTTOM		1/4	1/4	NA	10 1/2	10 3/4	10 3/4	11	11	11 1/2	11 1/2	11 3/4				
N206	Kanga position UP from BTM Hem edge		1/8	1/8	NA	2	2	2 1/8	2 1/4	2 3/8	2 1/2	2 5/8	2 3/4				
H710	Hood drawcord exit pos. fr neck		1/8	1/8	NA	1	1	1	1	1	1	1	1				
H606	Neck binding width		1/8	1/8	0	3/8	3/8	3/8	3/8	3/8	3/8	3/8	3/8				
⚠ H404	Minimum Neck Stretch		1/2	0	NA	24	24	24	24	24	24	24	24				
Q401	BUNGEE LOOP HOLDER LENGTH AT FRONT NECK SEAM		1/8	1/8	0	5/8	5/8	5/8	5/8	5/8	5/8	5/8	5/8				
Comments																	
REFERENCE: Q1 2025 Collegiate hoodie M-0125-KT-5256 <del>add rib Dorito (ref. M-0225-KT-5720)</del> <del>on seam pockets</del>																	

UN-AVAILABLE CO. LTD: Fit Approval-3 3rd proto [Sample 1 (M)]							Version 1
	Article Code	M-0325-KT-6101			Product Group	TOP	
	Article Name	CAMO HOODIE			Product Sub-Category	HOODIE-DO NOT USE	
	Created On	09-10-2024 3:17:43 PM	Material Description	FRENCH TERRY 100%COTTON WITH DRY HANDFEEL AND WASH (FB-K1311) CM30/1 + 20/1+ 10CD	Season	2025 Fall	
	Last Modified	04-10-2025 5:12:20 PM			Life Cycle Stage	Pre-Production	

POM	Description	+ Tol	- Tol	M	Sample	Diff	Revised
A201	Front body length from HPS : Top	1/2	1/2	28	27	-1	
H101	Neck width :: SEAM TO SEAM	1/4	1/4	9 1/2	9 1/2	0	
H201	Front neck drop from HPS : Crew	1/8	1/8	3 1/2	3 1/4	-1/4	
H301	Back neck drop from HPS Crew	1/8	1/8	1	1	0	
D102	Shoulder slope :: from HPS	1/8	1/8	2 1/2	2 1/2	0	
D103	Shoulder displacement to front	1/8	1/8	3/4	1/2	-1/4	
D101	Shoulder width :measured on CB body	3/8	3/8	22 1/2	22 1/2	0	
B301	Across: Chest : at mid. armhole	1/4	1/4	20 1/2	20 1/2	0	
B201	Across Back : at mid. armhole	1/4	1/4	21	20 3/4	-1/4	
B101	Chest width :1" below armhole	1/2	1/2	24 1/2	24 1/4	-1/4	
C101	Bottom width at hem:inside fold edges of hem	1/2	1/2	23 1/2	23	-1/2	
E101	Armhole Straight :: measured straight	1/4	1/4	11 1/2	11 1/4	-1/4	
G101	Bicep width:1" below armhole	1/4	1/4	10 1/2	10 1/2	0	
F101	L:Sleeve overarm fr. CB neck :: 3 x point measure	1/2	1/2	36 1/2	36 1/2	0	35 1/2
G104	L/Sleeve opening: inside fold edges of cuff/hem	1/8	1/8	4 1/4	4	-1/4	4
G103	L/Sleeve :: 1" above cuff seam	1/4	1/4	6 1/2	6 1/2	0	6
F701	Sleeve hem Height	1/8	1/8	1	1	0	
A703	Body hem Height	1/8	1/8	1	1	0	
H708	Hood casing width :: at CF	1/8	1/8	1	1	0	
H703	Hood width :: at 5" Below Top Edge	1/4	1/4	11 1/2	11 1/4	-1/4	
H701	Hood height at CF	1/4	1/4	15	14 1/2	-1/2	15
H702	Hood height at HPS	1/4	1/4	14	13 1/2	-1/2	14
N101	Kanga pocket height at center	1/4	1/4	8 3/4	8 5/8	-1/8	
N102	Kanga pocket width at top edge	1/4	1/4	9 3/4	9 3/4	0	
N103	Kanga pocket width at widest point	1/4	1/4	13 3/4	13 3/4	0	
N104	Kanga pocket width at BOTTOM	1/4	1/4	11	11	0	
N206	Kanga position UP from BTM Hem edge	1/8	1/8	2 1/4	2 3/8	1/8	
H710	Hood drawcord exit pos. fr neck	1/8	1/8	1	3/4	-1/4	
H606	Neck binding width	1/8	1/8	3/8	3/8	0	
H404	Minimum Neck Stretch	1/2	0	24	24	0	
Q401	BUNGEE LOOP HOLDER LENGTH AT FRONT NECK SEAM	1/8	1/8	5/8	1	3/8	

COMMENT


4.10.25

**STYLING COMMENTS:**

**1. Move neck loop 1/4" closer to CF for both sides. Please make both ends of loop overlap each other, the hole is currently too big and needs to be tighter/ overlap ends in order to hold bead. Please see below for examples.**

**FITTING COMMENTS:**

1. Bring back to spec on front body length measurement
2. Bring back to spec on front neck drop measurement
3. Bring back to spec on shoulder displacement measurement

UN-AVAILABLE CO. LTD: Fit Approval-3 3rd proto [Sample 1 (M)]							Version 1
	Article Code	M-0325-KT-6101			Product Group	TOP	
	Article Name	CAMO HOODIE			Product Sub-Category	HOODIE-DO NOT USE	
	Created On	09-10-2024 3:17:43 PM	Material Description	FRENCH TERRY 100%COTTON WITH DRY HANDFEEL AND WASH (FB-K1311) CM30/1 + 20/1+ 10CD	Season	2025 Fall	
	Last Modified	04-10-2025 5:12:20 PM		Life Cycle Stage	Pre-Production		

<div> 4. Revised sleeve overarm measurement 5. Revised sleeve opening at hem measurement 6. Revised sleeve 1" above cuff seam measurement 7. Revised hood height at CF and HPS measurement 8. Bring back to spec on hood drawcord position from neck measurement 9. Bring back to spec on bungee loop holder length at neck seam measurement 10. Ensure all measurements are brought back to spec. </div>							
<div> <b>WORKMANSHIP COMMENTS:</b> <div> 1. Please ensure there is no excessive puckering on seams. 2. Ensure the hem edges are level at the CF. 3. PLEASE ENSURE THAT SAMPLE IS MEETING SPEC </div> </div>							
<div> <b>3RD IS APPROVED FOR FIT AND CONSTRUCTION, PLEASE PROCEED TO PP</b> </div>							
Sample Size:		M					
Status:		Approved					
Approved By:		KoryLui (October's Very Own Merchandising)					
Approved On:		04-10-2025 5:11:55 PM					




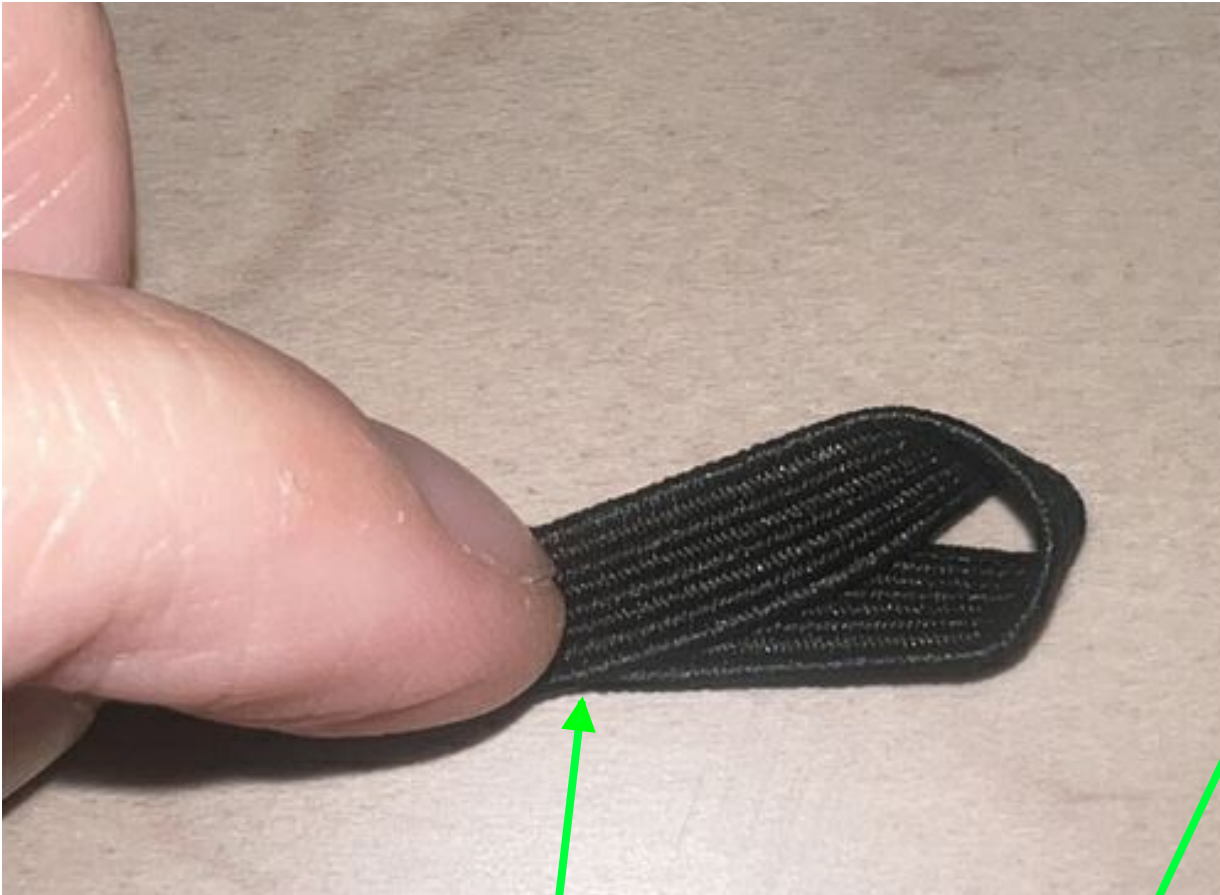
UN-AVAILABLE CO. LTD: Fit Approval-3 3rd proto - SAMPLE - FRONT, SIDE AND BACK

Version 1

Article Code	M-0325-KT-6101			Product Group	TOP
Article Name	CAMO HOODIE			Product Sub-Category	HOODIE-DO NOT USE
Created On	09-10-2024 3:17:43 PM	Material	FRENCH TERRY 100%COTTON WITH DRY HANDFEEL AND WASH (FB-K1311)	Season	2025 Fall
Last Modified	04-10-2025 5:12:20 PM	Description	CM30/1 + 20/1+ 10CD	Life Cycle Stage	Pre-Production




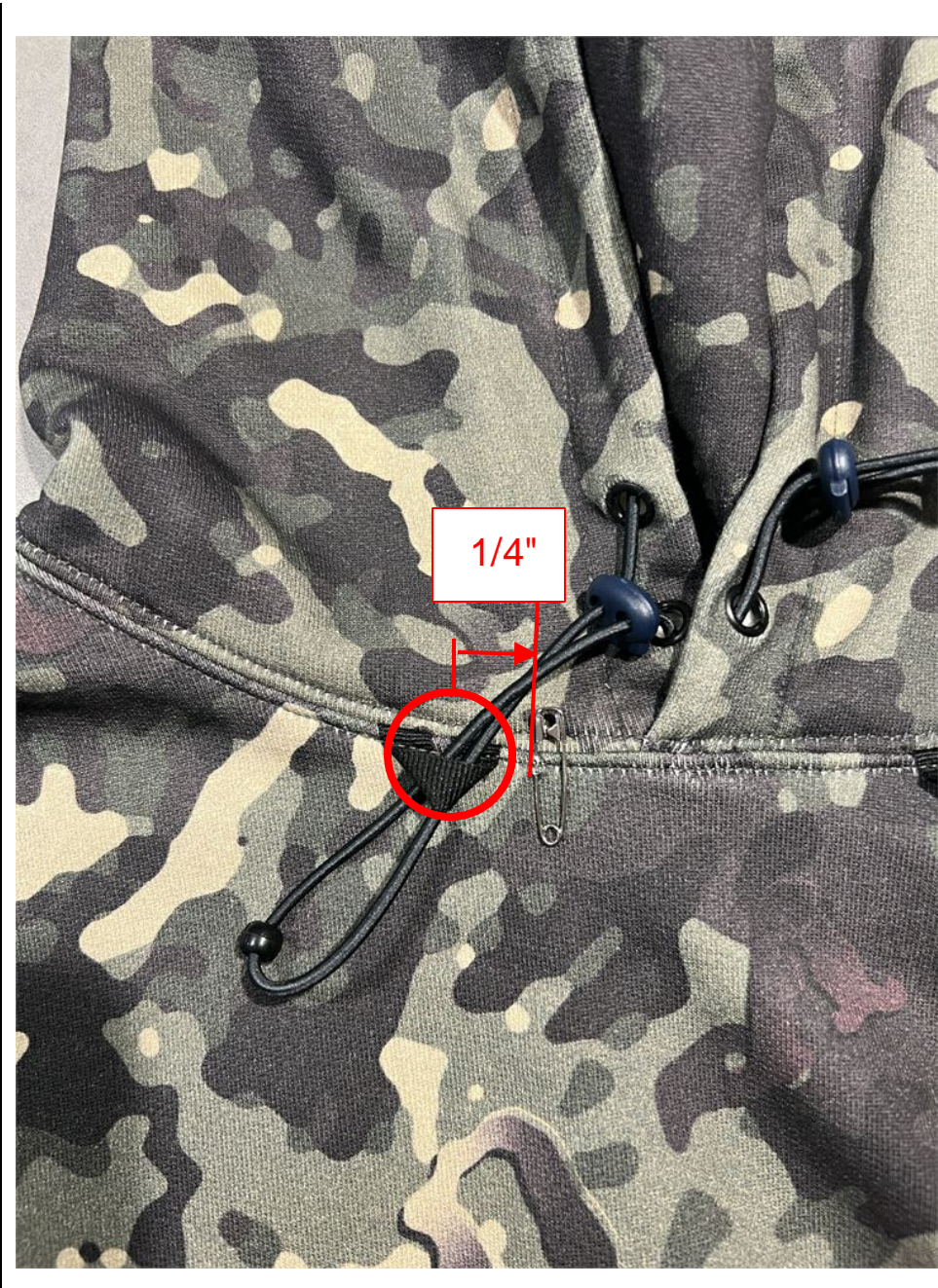
UN-AVAILABLE CO. LTD: Fit Approval-3 3rd proto - NECK LOOP EXAMPLE						Version 1
Article Code	M-0325-KT-6101			Product Group	TOP	
Article Name	CAMO HOODIE			Product Sub-Category	HOODIE-DO NOT USE	
Created On	09-10-2024 3:17:43 PM	Material	FRENCH TERRY 100%COTTON WITH DRY HANDFEEL AND WASH (FB-K1311)	Season	2025 Fall	
Last Modified	04-10-2025 5:12:20 PM	Description	CM30/1 + 20/1+ 10CD	Life Cycle Stage	Pre-Production	



NECK LOOP ENDS SHOULD OVERLAP TO CREATE A TIGHTER FIT FOR BEAD. THE CURRENT LOOP SHAPE CANNOT HOLD THE BEAD BECAUSE IT IS TOO LOOSE



UN-AVAILABLE CO. LTD: Fit Approval-3 3rd proto - move neck loop over							Version 1
	Article Code	M-0325-KT-6101		FRENCH TERRY 100%COTTON WITH DRY HANDFEEL AND WASH (FB-K1311) CM30/1 + 20/1+ 10CD	Product Group	TOP	
	Article Name	CAMO HOODIE			Product Sub-Category	HOODIE-DO NOT USE	
	Created On	09-10-2024 3:17:43 PM	Material Description		Season	2025 Fall	
	Last Modified	04-10-2025 5:12:20 PM			Life Cycle Stage	Pre-Production	



MOVE NECK LOOP OVER 1/4" CLOSER TO CENTER FRONT. PLEASE ENSURE NECK LOOP ENDS ARE OVERLAPPED TO CREATE A TIGHTER FIT