

OVERVIEW

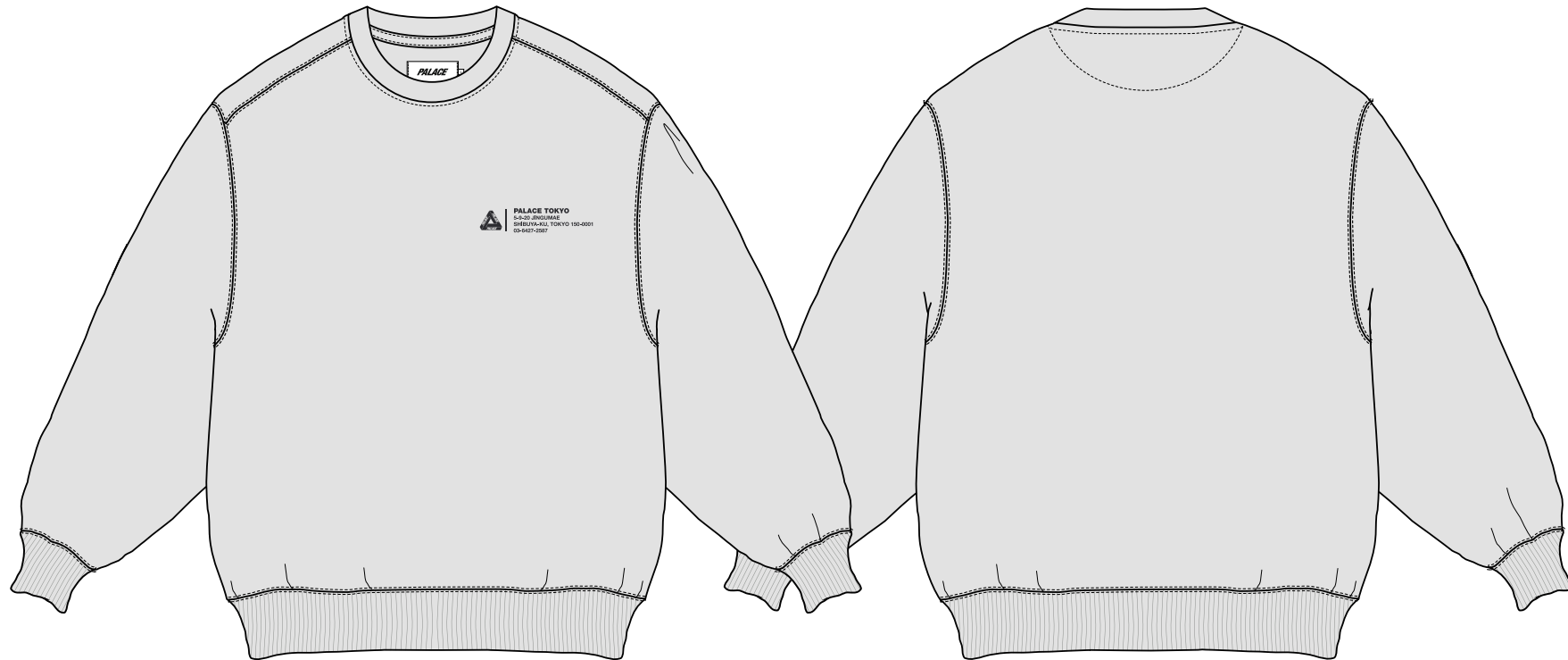
SWEAT BLOCK CS1WS
AMENDED
LOOSE FIT CREW SWEAT
WIDER SLEEVES

BRANDING:
REFER TO TECH PACK

- FABRIC MUST BE PRESHRUNK BEFORE CUTTING
- FABRIC MUST RELAX FULLY AFTER LAYING, BEFORE CUTTING

WASH :
REFER TO TECH PACK INSTRUCTIONS

FINISH :
DO NOT OVERPRESS GARMENT OR FLATTEN IT



GENERAL CONSTRUCTION

REFER TO TECH SHEETS FOR ARTWORK
AND BRANDING DETAILS

**ĐIỀU 1 KIM XUNG
QUANH ĐƯỜNG MAY CỔ**

EDGE STITCH AROUND
NECK TRIM

VIÊN CỔ SAU RỘNG 1CM

1CM WIDE JERSEY
BACK NECK TAPE

CAO ĐỘ SAU 9CM

STITCH THRU BN BUGGY 9CM DEEP

**ĐẢM BẢO VÒNG CỔ ĐO
CĂNG NHỎ NHẤT 31CM KHI
KÉO CĂNG**

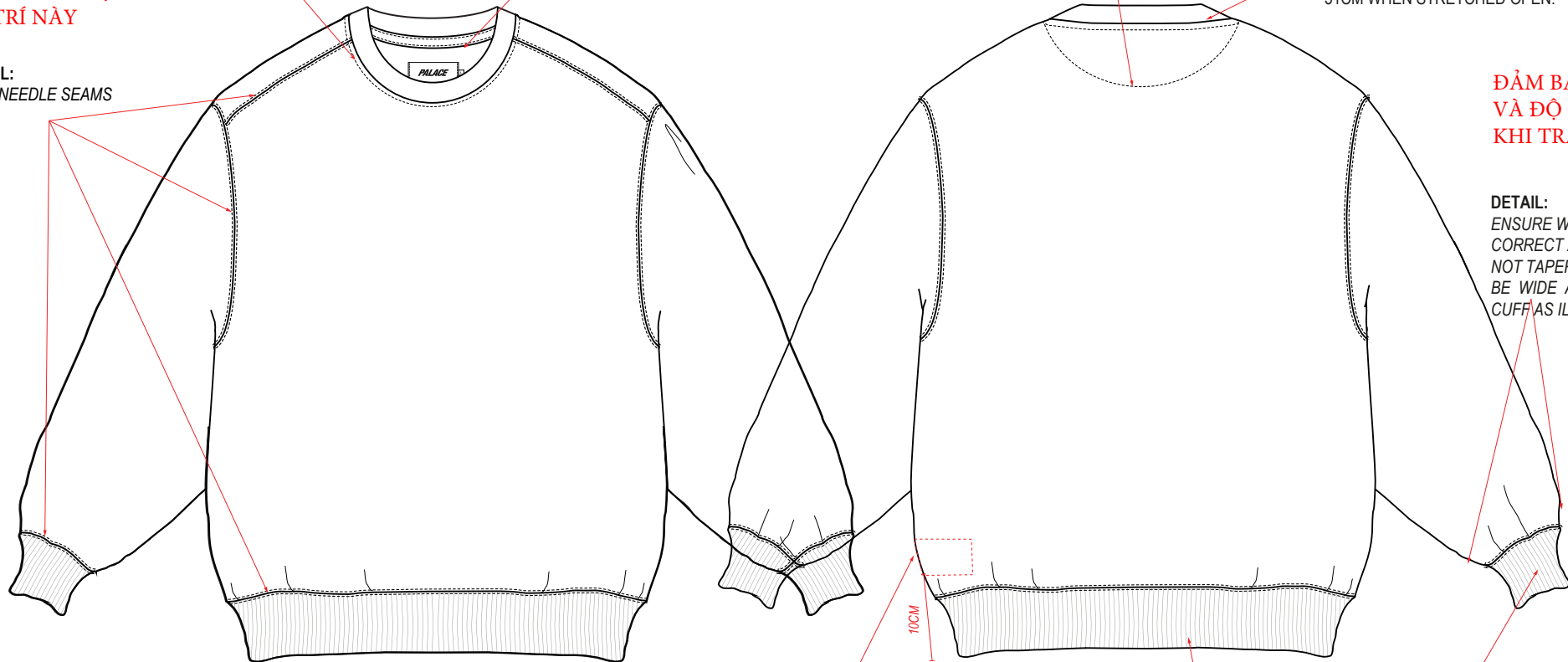
ENSURE NECK MEASUREMENT
REACHES MINIMUM STRETCH
31CM WHEN STRETCHED OPEN.

**ĐIỀU 2 KIM TẠI CÁC
VỊ TRÍ NÀY**

DETAIL:
TWIN NEEDLE SEAMS

**ĐẢM BẢO RỘNG BO TAY
VÀ ĐỘ CẮM CỦA BO SAU
KHI TRẢ RIB**

DETAIL:
ENSURE WIDTH ACROSS HERE IS
CORRECT AND SLEEVE SHOULD
NOT TAPER TO CUFF BUT IT SHOULD
BE WIDE AND GATHERED ONTO
CUFF AS ILLUSTRATED



**NHÃN THÀNH PHẦN GẮN BÊN
SƯỜN TRÁI NGƯỜI MẶC CÁCH
LAI 10CM**

DETAIL:
CARE LABEL 10CM ABOVE
BOTTOM EDGE ON
LEFT BACK SIDE SEAM AS WORN

DETAIL:
HEM RIB 8CM DEEP

DETAIL:
CUFF RIB 8CM DEEP.

BO TAY, BO LẠI 8CM

POINTS OF MEASURE

