

## OVERVIEW

SWEAT BLOCK CS1WS  
AMENDED  
LOOSE FIT CREW SWEAT  
WIDER SLEEVES

THIS STYLE IS PART OF A CAPSULE  
WITH

P29CS083\_084\_085\_086

PLEASE MAKE SURE ALL  
CONSTRUCTION AND FINISHINGS  
ARE CONSISTENT

### BRANDING:

REFER TO TECH PACK

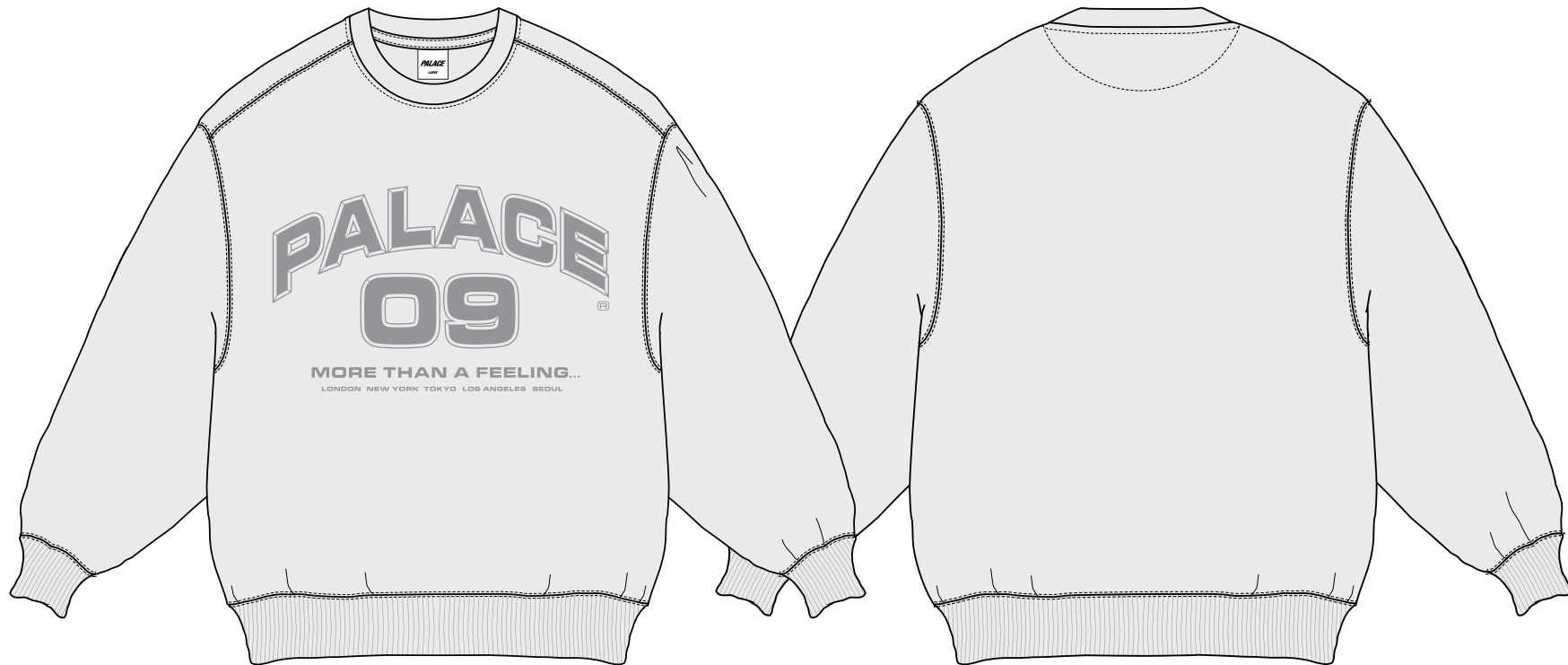
- FABRIC MUST BE PRESHRUNK BEFORE CUTTING
- FABRIC MUST RELAX FULLY AFTER LAYING, BEFORE CUTTING

### WASH :

REFER TO TECH PACK INSTRUCTIONS

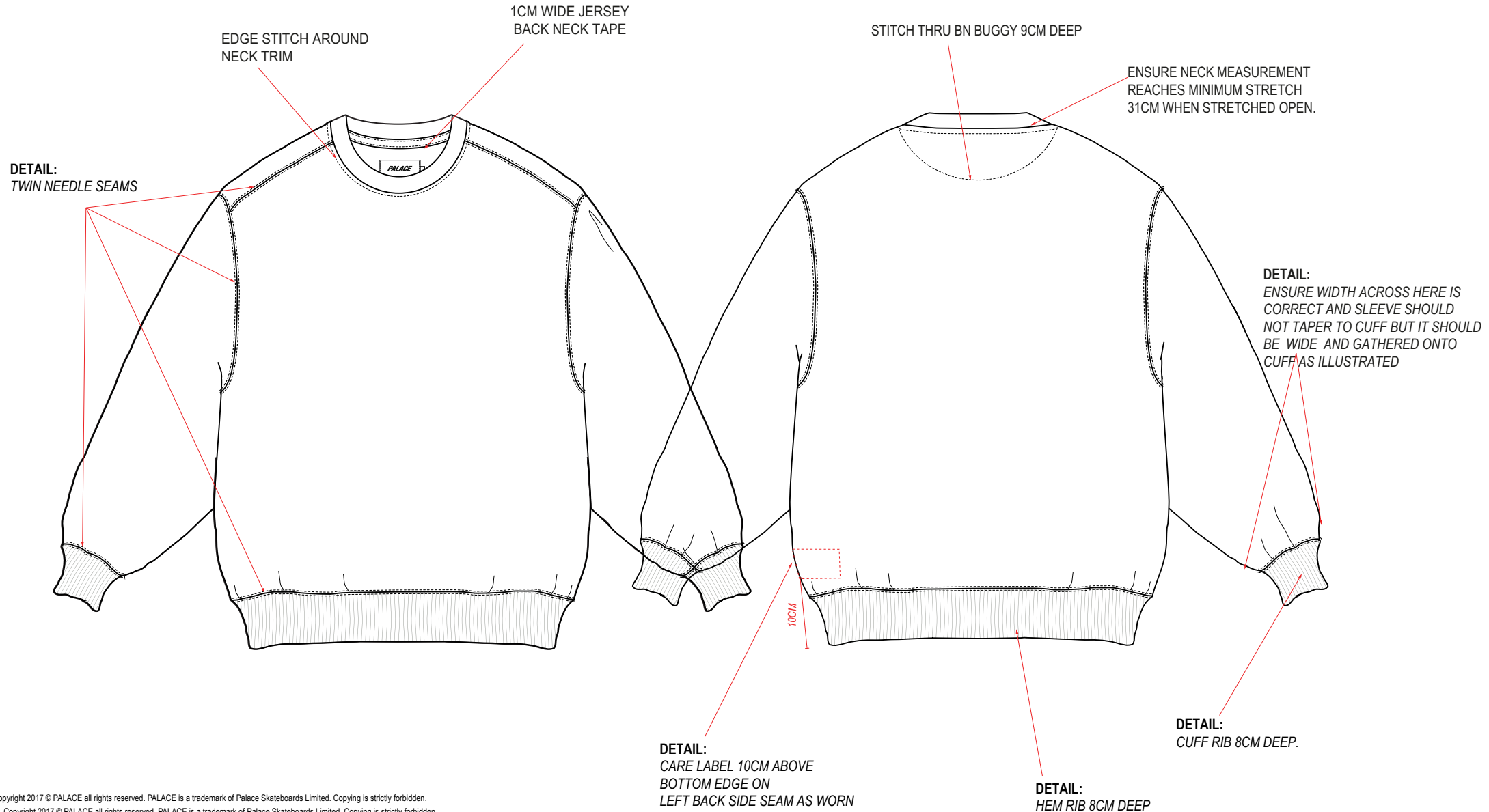
### FINISH :

DO NOT OVERPRESS GARMENT OR FLATTEN IT



## GENERAL CONSTRUCTION

REFER TO TECH SHEETS FOR ARTWORK  
AND BRANDING DETAILS



## POINTS OF MEASURE

