

OVERVIEW

BLOCK: **ES29LS**

STYLES USING THIS BLOCK:

SUMMER 25:

P28ES044_045_046_047

AUTUMN 24:

P26VWES008_009_010

BRANDING:

REFER TO TECH PACK

- FABRIC MUST BE PRESHRUNK BEFORE CUTTING.
- FABRIC MUST RELAX FULLY AFTER LAYING, BEFORE CUTTING

WASH :

RINSE WASH + DRY HANDFEEL

FINISH :

DO NOT OVERPRESS GARMENT OR FLATTEN IT



GENERAL CONSTRUCTION

REFER TO TECH PACK FOR
BRANDING AND ARTWORK

DETAIL:

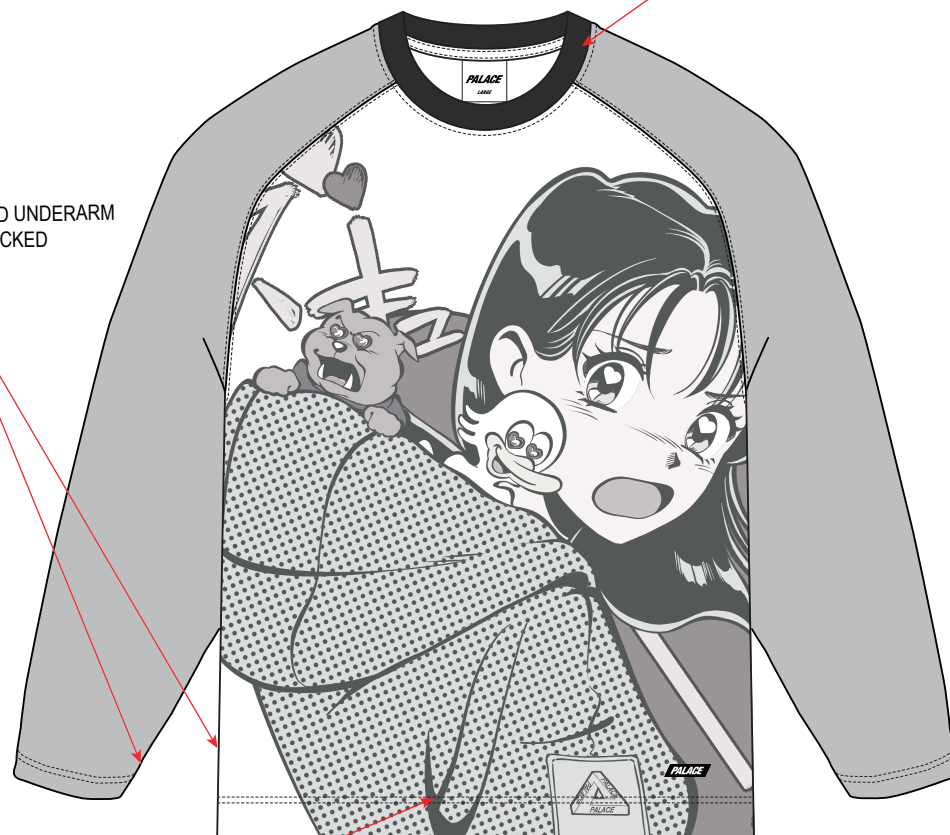
- NECK RIB 2.5CM DEEP.
- SELF BINDING AT BACK NECK
- RIB TO BE CORRECT WEIGHT AND QUALITY FOR THE WEIGHT OF FABRIC AND SO IT HAS ENOUGH STRETCH TO LAY FLAT AND NOT HAVE BEVELLED EDGES.

DETAIL:

- RAGLAN SEAMS F & B OVERLOCKED THEN TWIN NEEDLE TOP STITCHED

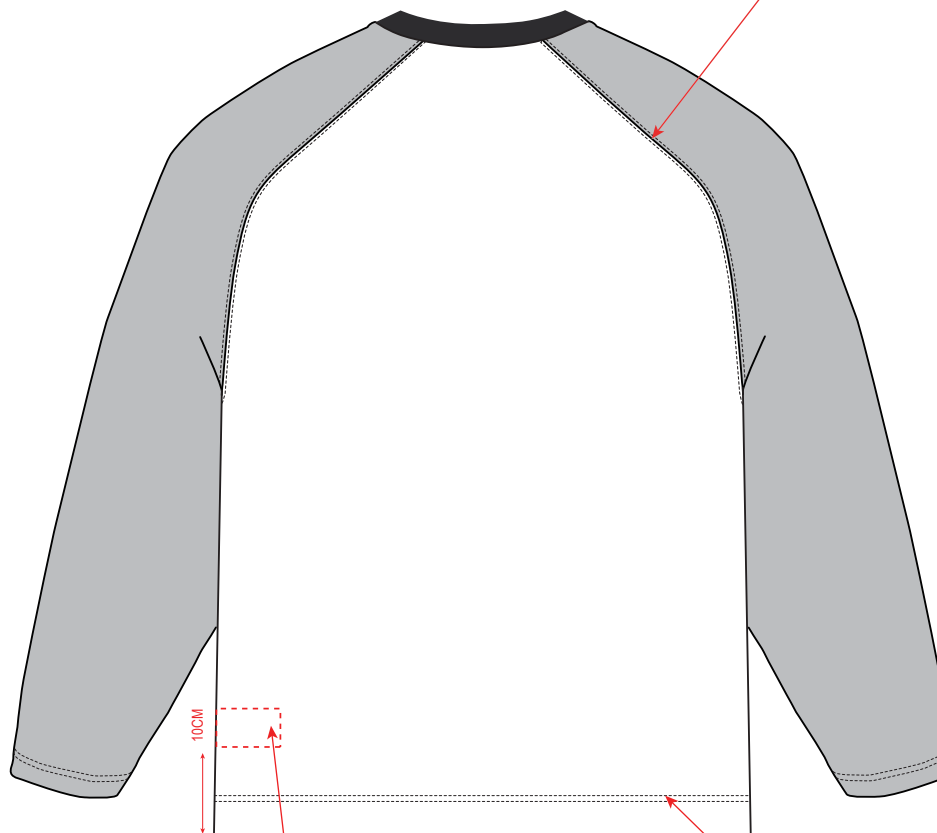
DETAIL:

- SIDE SEAM AND UNDERARM SEAM OVERLOCKED



DETAIL:

- TWIN NEEDLE STITCHING TO HEM
- 2.5CM DEEP



DETAIL:

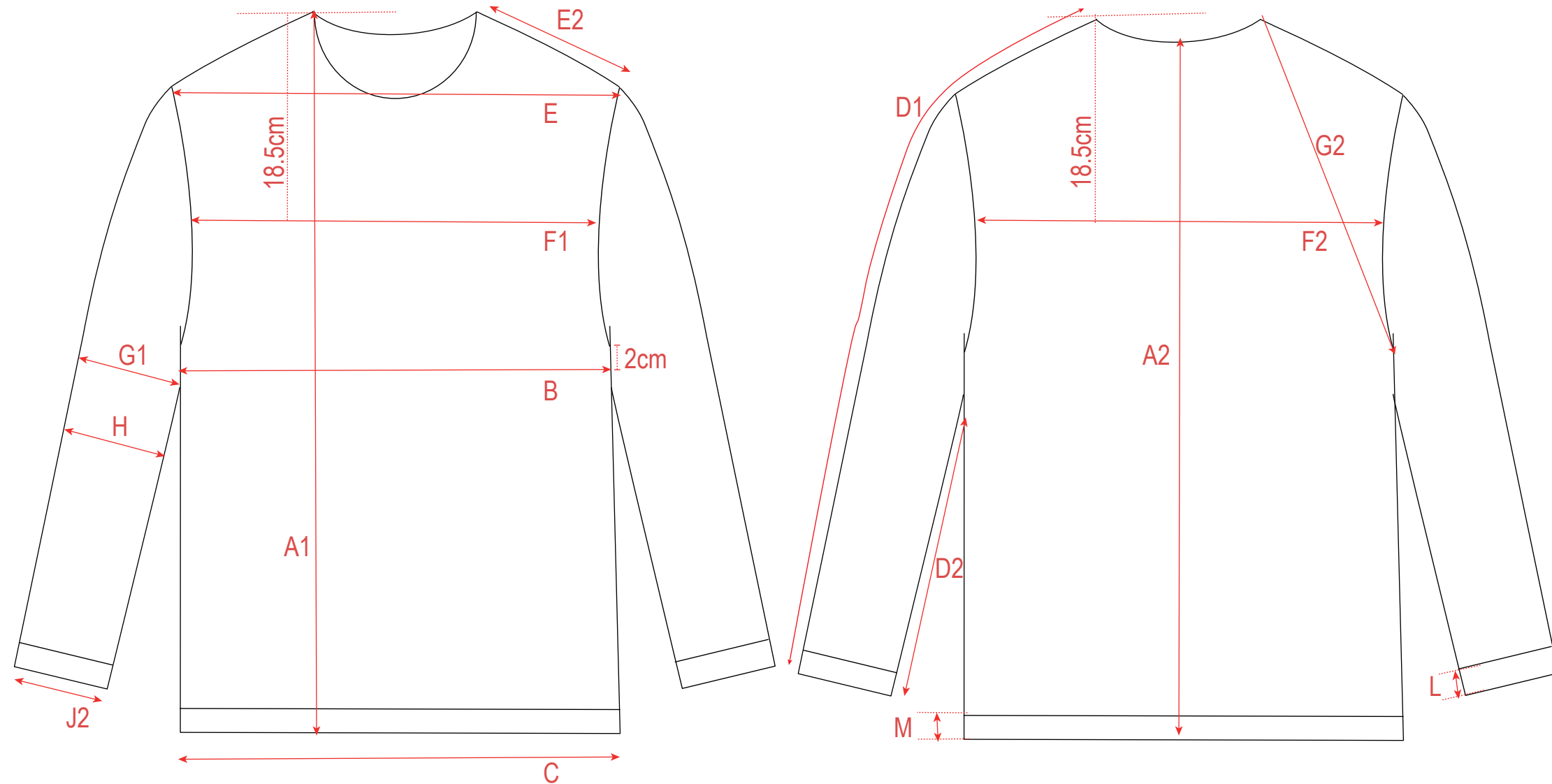
- WASH CARE LABEL
- 10CM FROM BOTTOM EDGE ON LEFT SIDE SEAM.

DETAIL:

- SLEEVE HEM 2.5CM DEEP.
- TWIN NEEDED

CAO BÀN LẠI TAY VÀ LẠI 2.5CM, THANH PHAM ĐIỀU 2 KIM

POINTS OF MEASURE





POINTS OF MEASURE

