



STYLE #118556 SATIN PATCH OVERSIZED HOOD



WASHED BLACK



GREEN



BLUE



OFF WHITE



STYLE #118556 SATIN PATCH OVERSIZED HOOD

SEASON : FALL 24

STYLE NO.	118556	VENDOR	UNAVAILABLE
STYLE NAME	SATIN PATCH OVERSIZED HOOD	CATEGORY	FASHION FLEECE
DESIGNER	MEL	SIZE RUN	S, M, L, XL, XXL

FIT/STYLE REFERENCE

SEASON	STYLE NO.	STYLE NAME	REFERENCE DETAIL
SU24	118550	STUSSY INTL RELAXED HOOD	BASIC BODY SPEC

FABRIC(S)

FABRIC / SHELL	66% COTTON 34% POLY 535GSM (CAMBER “LOFTY” FLEECE)	EMBELLISHMENT	PATCH WITH EMBROIDERY
FABRIC #2	POLY SATIN (FOR APPLIQUE) FTY SOURCE	WASH	PC DYE + GARMENT WASH
THREAD SIZE	T40	SPI	10~12 SPI

COLORWAY FABRIC AND TRIMS CHART

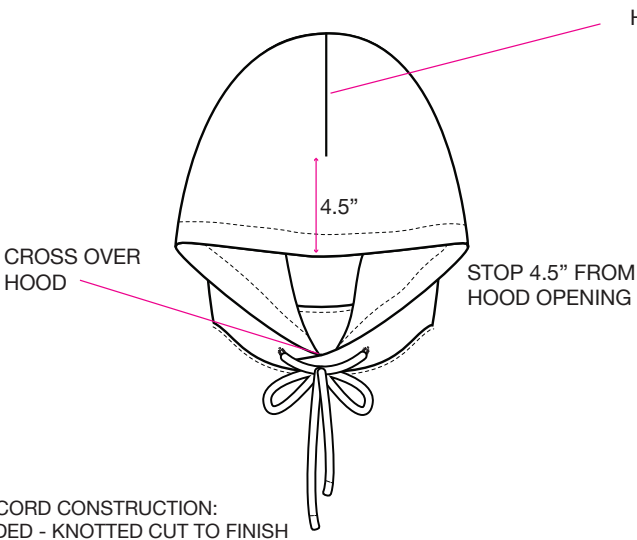
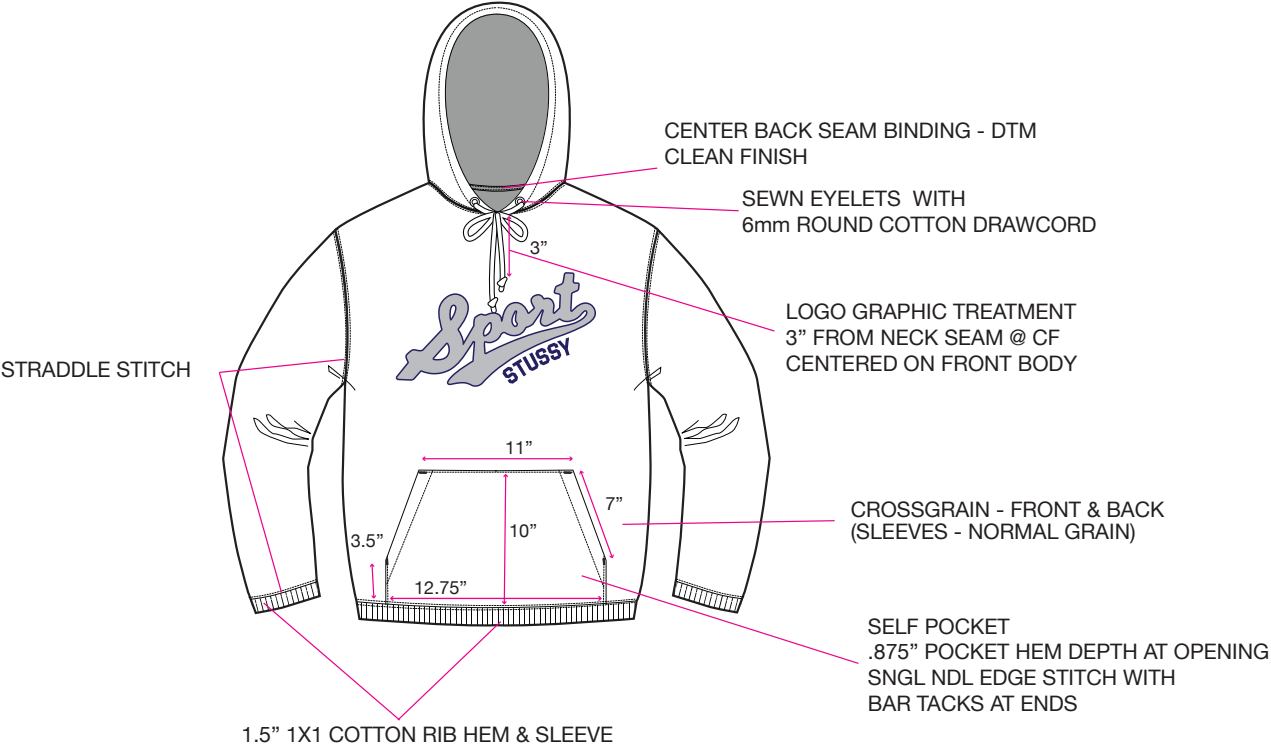
	COLORWAY 1	COLORWAY 2	COLORWAY 3	COLORWAY 4			
COLORWAY	WASHED BLACK	GREEN	BLUE	OFF WHITE			
FABRIC	19-4008 TCX	1)19-5408 TCX 2)19-5232 TCX	1)18-3920 TCX 2)19-4030 TCX	1)12-0104 TCX 2)11-0607 TCX			
THREAD COLOR	DTM	DTM	DTM	DTM			
EMBROIDERY	12-0104 TCX	12-0104 TCX	14-0952 TCX	19-3937 TCX			
POLY SATIN PATCH	18-0135 TCX	19-4008 TCX	19-3937 TCX	15-0948 TCX			
RIB	DTM	DTM	DTM	DTM			
DRAWCORD	DTM	DTM	DTM	DTM			
EYELET	DTM	DTM	DTM	DTM			



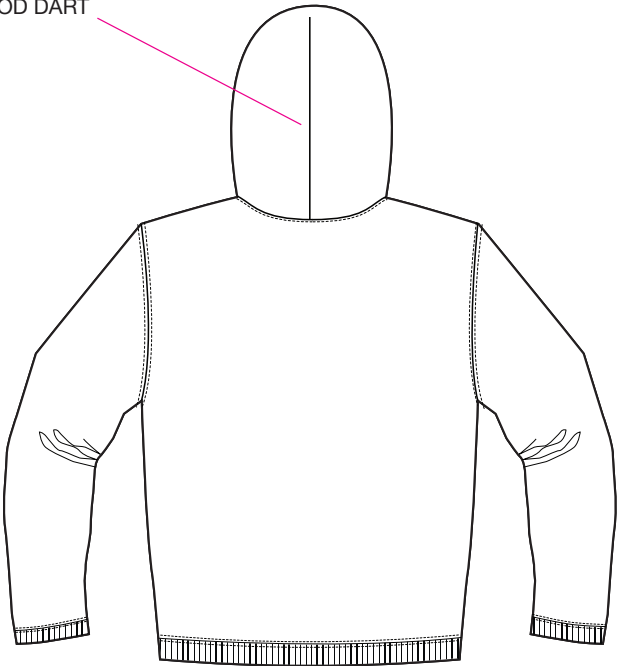
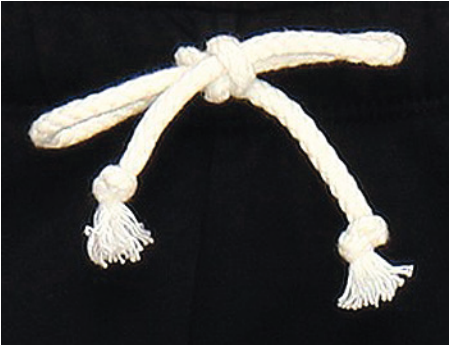
ROUNDED COTTON DRAWCORD - FTY SOURCED



STYLE #118556 SATIN PATCH OVERSIZED HOOD








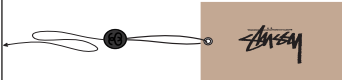
DRAWCORD CONSTRUCTION:
ROUNDED - KNOTTED CUT TO FINISH





STYLE #118556 SATIN PATCH OVERSIZED HOOD

****VENDOR RESPONSIBLE FOR ORDERING AND PAYMENT TO ZABIN FOR ALL TRIMS ON THIS PAGE****

ZABIN #	NAME	IMAGE	PLACEMENT	QTY
ZWVNL06	MED STOCK STRIP		SEWN INSIDE CENTER BACK NECK 1/2" DOWN FROM NECK SEAM	1
ZWVNL20	SIZE + COO LOOP LABEL MADE IN VIETNAM		CENTERED & SEWN INTO BOTTOM OF ORIGINAL LARGE STOCK LABEL	1
ZDNA01	MINI AUTHENTIC DNA LABEL		SEWN INTO WEARER'S INTERIOR LEFT SIDE SEAM	1
SMST	UPC BARCODE STICKER (HANGTAG)		PLACE ON BACK OF HANGTAG	1
SMST	UPC BARCODE STICKER (POLY BAG)		PLACE ON THE OUTSIDE, FRONT LOWER RIGHT CORNER OF POLY BAG	1
ZHGT08	STOCK LARGE HANGTAG WITH STRING		LOOP STRING THROUGH COO LABEL AT CENTER BACK NECK	1



AVERY DENISON CARE & CONTENT LABELS

ALL CARE AND CONTENT LABELS WILL BE ORDERED FROM AVERY DENISON.
ONLY THE ENGLISH NEEDS TO BE FILLED IN ON FORM.
AVERY DENISON WILL PROVIDE ALL OTHER LANGUAGES.

SEND COMPLETED ORDER FORM TO:

Selina Wang <selina.wang1@ap.averydennison.com>

Phone +86 20 32335525

CB681418A - STS UNIVERSAL CL GARMENT - EJ

ENGLISH

LABEL #1

JAPANESE

FRONT

BACK

28mm

28mm

68mm

— .

✂

M

100% COTTON
LINING 1
65% POLYESTER
35% COTTON
LINING 2
100% POLYESTER
FILLING
100% POLYESTER
MADE IN TURKEY

☰ ▲ ☐ ☐ ☒

CA# 28629
RN# 94974

HAVE A
GOOD VIBE!!

PO# 000000
STYLE# 000000

68mm

100% コットン
裏地 1
65% ポリエステル
35% コットン
裏地 2
100% ポリエステル
詰め物
100% ポリエステル
トルコ製

☰ ▲ ☐ ☐ ☒

(株)ジャック
0548-22-7366

✂

CB686688A - STS UNIVERSAL CL GARMENT - FC

FRENCH

LABEL #2

CHINESE

FRONT

BACK

28mm

28mm

68mm

— .

✂

100% COTON
DOUBLURE 1
65% POLYESTER
35% COTON
DOUBLURE 2
100% POLYESTER
REMBOURRAGE
100% POLYESTER
FABRIQUÉ EN
TURQUIE

☰ ▲ ☐ ☐ ☒

STUSSY, INC
44 RUE DU TEMPLE
75004 PARIS, FRANCE

68mm

M 175/92A

面料:100%棉
里料1:65%聚酯纤维
35%棉
里料2:100%聚酯纤维
填充物:100%聚酯纤维
产地:土耳其

☰ ▲ ☐ ☐ ☒

✂

NOTE: THESE ARE EXAMPLES OF LABELS AND NOT FINAL ART
BOTH LABELS MUST BE SEWN IN PRODUCT



DIRECT EMBROIDERED LOGO
POLY SATIN PATCH
W/ EMBROIDERED BORDER

- EMBROIDERY
- POLY SATIN

1/8" ZIG ZAG STITCH
SHOULD BE VERY TIGHT SO BORDER LOOKS SOLID



12"





STYLE #118556 SATIN PATCH OVERSIZED HOOD

FOLLOW REF. BELOW FOR SLIGHT SUN FADE WORN IN LOOK

