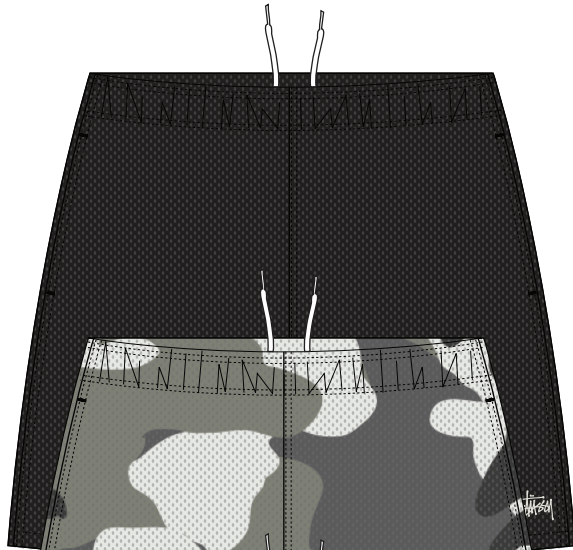
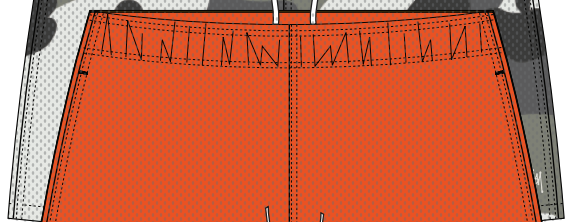




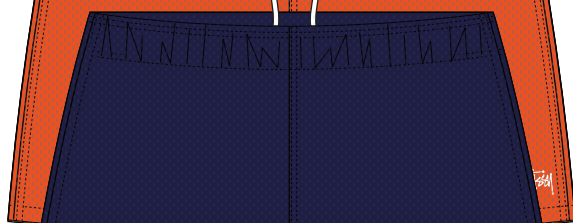
STYLE #112335 MESH SHORT BASIC



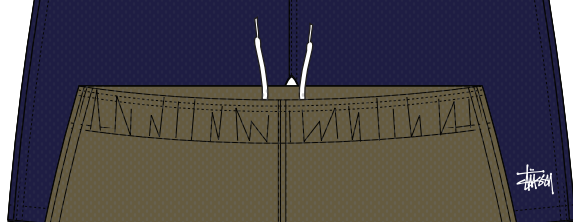
BLACK



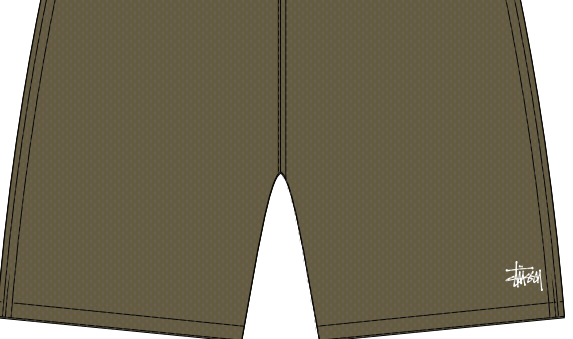
SNOW CAMO



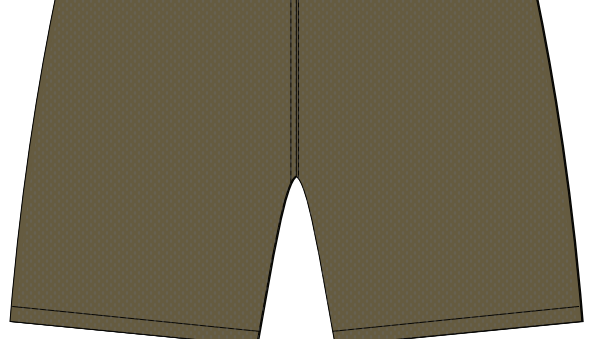
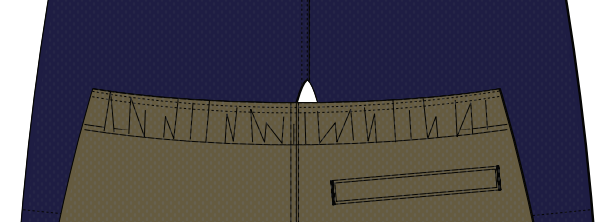
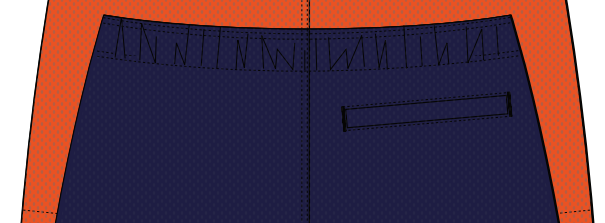
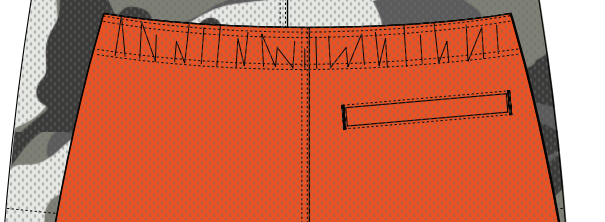
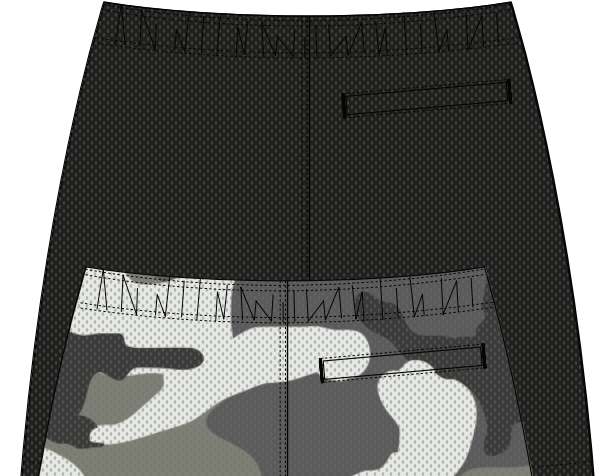
ORANGE



BLUE



OLIVE





## STYLE #112335 MESH SHORT BASIC

## SEASON : FALL 25

STYLE NO.	#112335	VENDOR	UNAVAILABLE
STYLE NAME	MESH SHORT BASIC	CATEGORY	BOTTOM (ELASTIC WAIST)
DESIGNER	LAURENS MEISTER	SIZE RUN	S, M, L, XL, XXL

## FIT/STYLE REFERENCE

SEASON	STYLE NO.	STYLE NAME	REFERENCE DETAIL
SP25	#112335	MESH SHORT BASIC	FIT/SPEC/SEW GUIDE/TRIMS

**FABRIC(S)**

<b>FABRIC / SHELL</b>	100% POLY MESH 160GSM - MA101-A	<b>LINING / INTERIOR</b>	
-	DOUBLE LAYER (SELF)	<b>POCKETING</b>	SELF / MESH
-		<b>WASH</b>	N/A

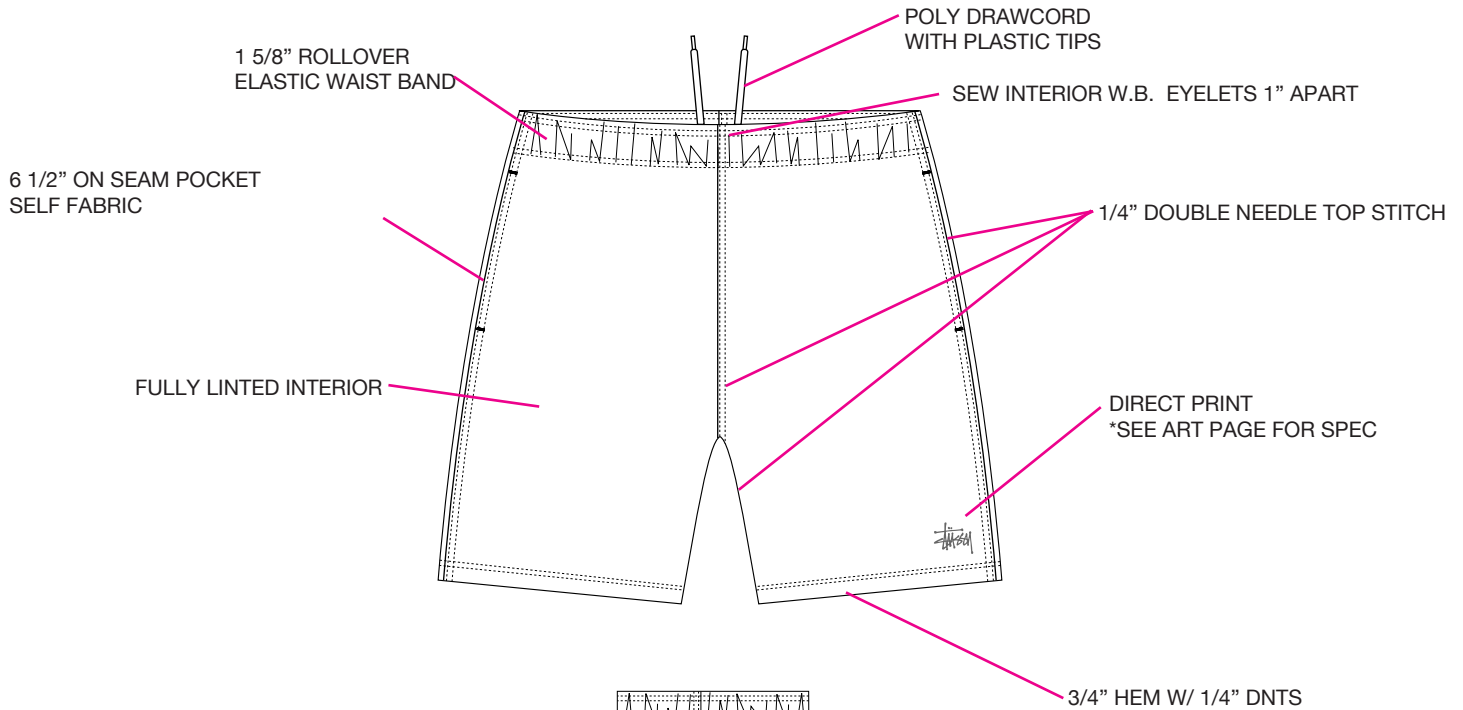
## COLORWAY FABRIC AND TRIMS CHART

[illegible]

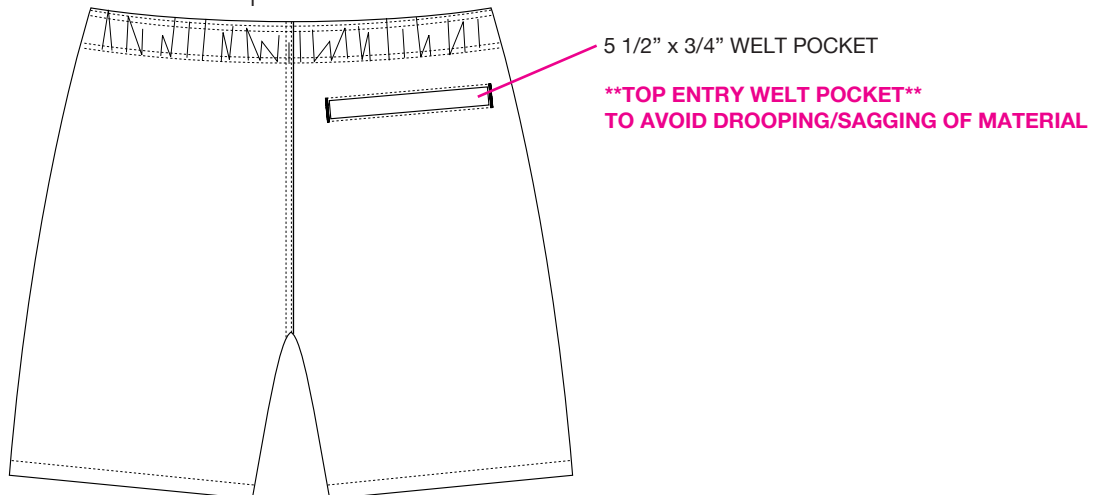
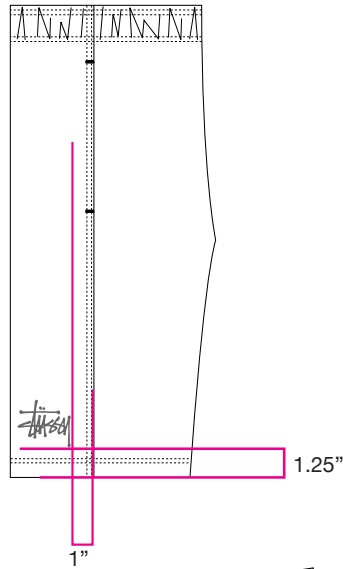


## STYLE #112335 MESH SHORT BASIC

1/4" DOUBLE NEEDLE TOP STITCH - ALL SEAMS








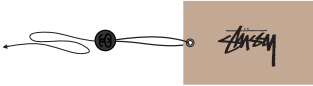
**THAM KHẢO QUY CÁCH  
MAY MẪU PPS- SP25-  
DROP 2-ST112335A**





## STYLE #112335 MESH SHORT BASIC

**\*\*VENDOR RESPONSIBLE FOR ORDERING AND PAYMENT TO ZABIN FOR ALL TRIMS ON THIS PAGE\*\***

ZABIN #	NAME	IMAGE	PLACEMENT	QTY
ZWVNL21/BLK	STOCK LOOP LABEL		CENTER BACK WAIST	1
ZWVNL20	SIZE + COO LOOP LABEL MADE IN VIETNAM		SEWN NEXT TO ORIGINAL STOCK LOOP LABEL	1
ZDNA01	MINI AUTHENTIC DNA LABEL		SEWN INTO WEARER'S INTERIOR LEFT SIDE SEAM	1
SMST	UPC BARCODE STICKER (HANGTAG)		PLACE ON BACK OF HANGTAG	1
SMST	UPC BARCODE STICKER (POLY BAG)		PLACE ON THE OUTSIDE, FRONT LOWER RIGHT CORNER OF POLY BAG	1
ZHGT08	STOCK HANGTAG WITH STRING		LOOP STRING THROUGH COO LABEL AT CENTER BACK NECK	1



## AVERY DENISON CARE & CONTENT LABELS - GARMENTS

ALL CARE AND CONTENT LABELS WILL BE ORDERED FROM AVERY DENISON.  
ONLY THE ENGLISH NEEDS TO BE FILLED OUT ON THE FORM.  
AVERY DENISON WILL PROVIDE ALL OTHER LANGUAGES.

SEND COMPLETED ORDER FORM TO:

Selina Wang <selina.wang1@ap.averydennison.com>

Phone +86 20 32335525

### CB681418A - STS UNIVERSAL CL GARMENT - EJ

ENGLISH

LABEL #1

JAPANESE

FRONT

BACK

— .

✂

M

100% COTTON  
LINING 1  
100% POLYESTER  
FILLING  
100% POLYESTER  
MADE IN TURKEY

☐☐☐☐☐☐

MACHINE WASH COLD  
DO NOT BLEACH  
TUMBLE DRY LOW  
IRON LOW  
DO NOT DRY CLEAN

CA# 28629  
RN# 94974

HAVE A  
GOOD VIBE!!

PO# 000000  
STYLE# 000000

100% コットン  
裏地 1  
100% ポリエステル  
詰め物  
100% ポリエステル  
トルコ製

☐☐☐☐☐☐

(株)ジャック  
0548・22・7366

✂

### CB686688A - STS UNIVERSAL CL GARMENT - FC

FRENCH

LABEL #2

CHINESE

FRONT

BACK

— .

✂

M

100% COTON  
DOUBLURE 1  
100% POLYESTER  
REMBOURRAGE  
100% POLYESTER  
FABRIQUÉ EN  
TURQUIE

☐☐☐☐☐☐

LAVAGE MACHINE FROID  
NE PAS JAVELLISER  
BASSE TEMPERATURE  
FER BAS  
NE PAS NETTOYER

STUSSY, INC  
44 RUE DU TEMPLE  
75004 PARIS, FRANCE

175/92A

面料:100%棉  
里料1:100%聚酯纤维  
填充物:100%聚酯纤维  
产地:土耳其

☐☐☐☐☐☐

✂

NOTE: THESE ARE EXAMPLES OF LABELS AND NOT FINAL ART  
BOTH LABELS MUST BE SEWN IN PRODUCT



STYLE #112335 MESH SHORT BASIC

DIRECT PRINT  
WEARER'S LEFT LEG  
ARTWORK IS 100% TO SCALE

COLOR ON PG. 2

**2.25" W x 2"**



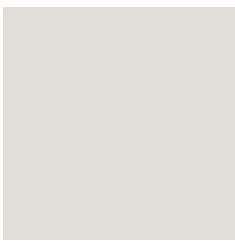


ARTWORK IS 100% TO SCALE  
33” WIDTH X 20.67” HEIGHT  
(83.82 cm WIDTH X 52.4911 cm HEIGHT)



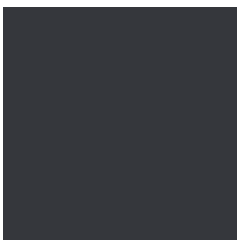
OPTION A

FABRIC BASE COLOR:

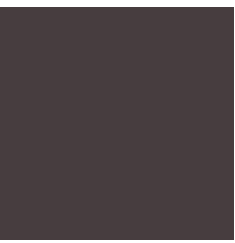


12-4302 TCX

3-COLOR ROTATION PRINT:



19-4205 TCX



19-3903 TCX



17-0510 TCX