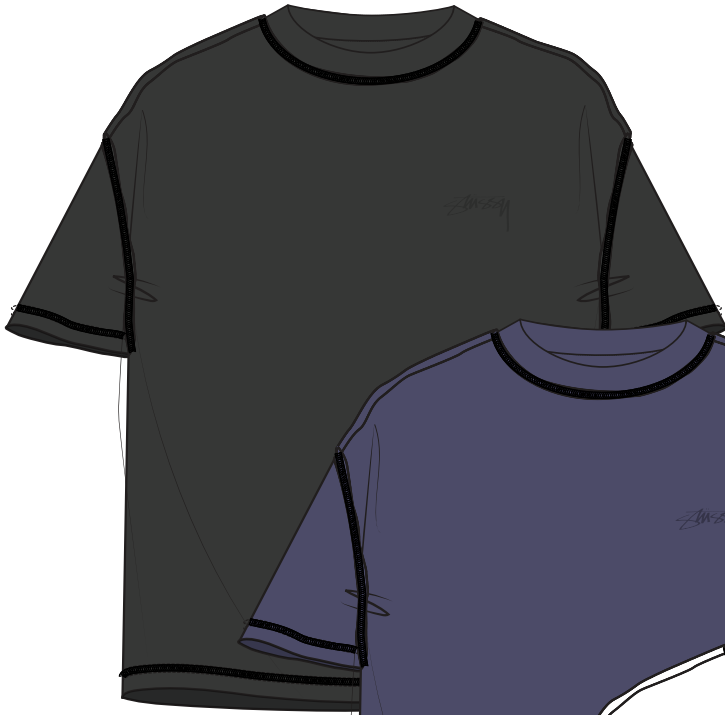
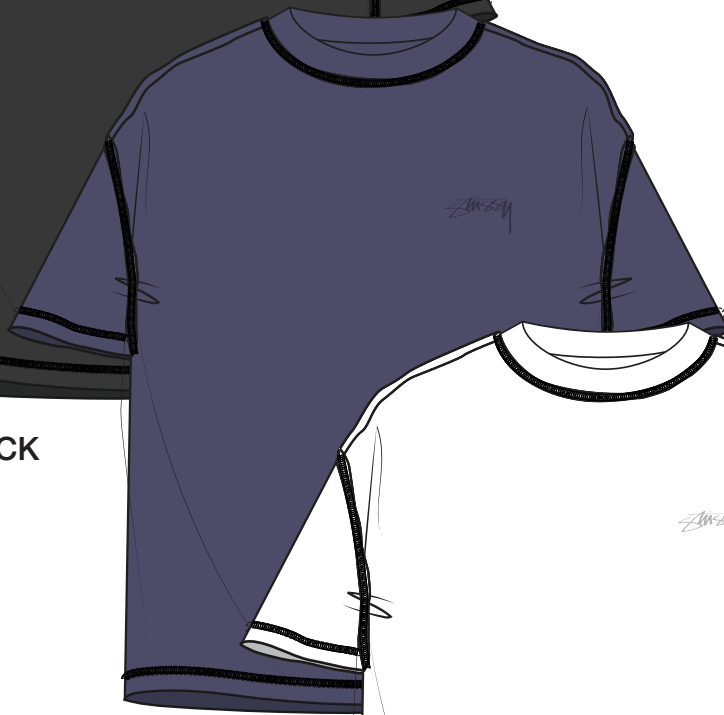




STYLE #1140283 LAZY SS TEE



VINTAGE BLACK



VINTAGE NAVY



WHITE



STYLE #1140283 LAZY SS TEE

SEASON : FALL 25

STYLE NO.	1140283	VENDOR	UNAVAILABLE
STYLE NAME	LAZY SS TEE	CATEGORY	JERSEY
DESIGNER	DAN KIM	SIZE RUN	S, M, L, XL, XXL

FIT/STYLE REFERENCE

SEASON	STYLE NO.	STYLE NAME	REFERENCE DETAIL
			REFER TO SP25 #1140283

FABRICS, EMBELLISHMENT & WASH

FABRIC #1	100% DRY COTTON 190gms (as HO24)	EMBELLISHMENT	PRINTED LOGO ( PRINT ON INSIDE)
FABRIC #2	100% COTTON RIB	WASH	PIGMENT DYED

COLORWAY FABRIC AND TRIMS CHART

	COLORWAY 1	COLORWAY 2	
COLORWAY	VINTAGE BLACK	VINTAGE NAVY	
THREAD	DTM BODY	DTM BODY	
GARMENT	REFER TO SWATCH WE SENT	19-3832 TPG	
RIB	DTM BODY	DTM BODY	
JERSEY BINDING	DTM BODY	DTM BODY	
PRINT	BLACK	BLACK	
	COLORWAY 3		
COLORWAY	WHITE		
THREAD	DTM BODY		
GARMENT	OPTION A (PFD WHITE) OPTION B (11-0601 TPG)		
RIB	DTM BODY		
JERSEY BINDING	DTM BODY		
PRINT	BLACK		



## STYLE #1140283 LAZY SS TEE

7/8" SET IN NECK TRIM  
WITH 1/4" JERSEY BINDING OUTSIDE BACK NECK & SHOULDER SEAM  
FOR CLEAN FINISH  
CHAIN STITCH (OUTSIDE OF GARMENT)  
1/4" SINGLE TOP STITCH AT NECK (INSIDE OF GARMENT)

CHAIN STITCH (OUTSIDE OF GARMENT)  
1/4" SINGLE TOP STITCH AT ARMHOLE (INSIDE OF GARMENT)

PRINTED LOGO  
PRINT ON INSIDE OF THE GARMENT  
\*REFER TO PAGE 6 GUIDE

1" HEM STITCH  
COVERSTITCHED

SIDE SEAM W/ COVER STITCHED



**\*1/4" SINGLE TOP STITCH AT NECK & ARMHOLE (INSIDE OF GARMENT)\***



STYLE #1140283 LAZY SS TEE

**NECK - OUTSIDE OF GARMENT**



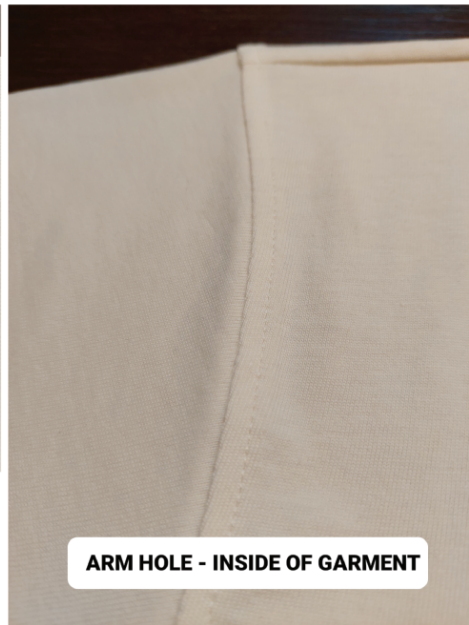
**NECK - INSIDE OF GARMENT**



**ARM HOLE - OUTSIDE OF GARMENT**



**ARM HOLE - INSIDE OF GARMENT**






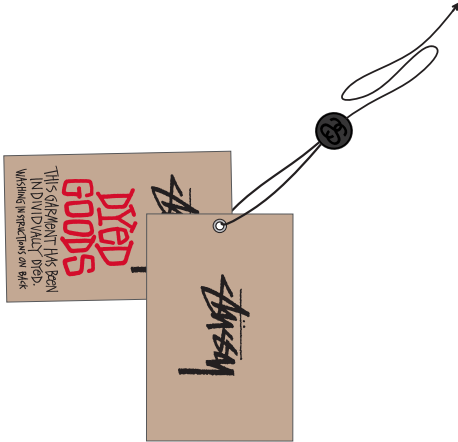
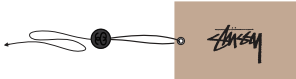


WE WANT ACTUAL INSIDE-OUT! (REFERENCE PHOTOS) - OUTSIDE OF GARMENT



## STYLE #1140283 LAZY SS TEE

**\*\*VENDOR RESPONSIBLE FOR ORDERING AND PAYMENT TO ZABIN FOR ALL TRIMS ON THIS PAGE\*\***

ZABIN #	NAME	IMAGE	PLACEMENT	QUANTITY
ZWVNL05	SMALL STOCK STRIP LABEL		SEWN INSIDE CENTER BACK NECK 1/2" DOWN FROM NECK SEAM	1
ZWVNL20	SIZE + COO LOOP LABEL MADE IN VIETNAM		CENTERED & SEWN INTO BOTTOM OF SMALL STOCK STRIP LABEL	1
ZDNA01	MINI AUTHENTIC LABEL		<b>TOPS/JACKETS:</b> SEWN INTO WEARER'S INTERIOR LEFT SIDE SEAM	1
SMST	UPC BARCODE STICKER (HANGTAG)		PLACE ON BACK OF HANGTAG	1
SMST	UPC BARCODE STICKER (POLY BAG)		PLACE ON THE OUTSIDE, FRONT LOWER RIGHT CORNER OF POLY BAG	1
ZHGT09	DYED GOODS LOCK UP WITH STRING (VINTAGE BLACK & VINTAGE NAVY)		LOOP STRING THROUGH COO LABEL AT CENTER BACK NECK	1
ZHGT08	STOCK HANGTAG WITH STRING (WHITE COLORWAY)		LOOP STRING THROUGH COO LABEL AT CENTER BACK NECK	1



## AVERY DENISON CARE & CONTENT LABELS - GARMENTS

ALL CARE AND CONTENT LABELS WILL BE ORDERED FROM AVERY DENISON.  
ONLY THE ENGLISH NEEDS TO BE FILLED OUT ON THE FORM.  
AVERY DENISON WILL PROVIDE ALL OTHER LANGUAGES.

SEND COMPLETED ORDER FORM TO:

Selina Wang <selina.wang1@ap.averydennison.com>

Phone +86 20 32335525

### CB681418A - STS UNIVERSAL CL GARMENT - EJ

ENGLISH

LABEL #1

JAPANESE

FRONT

BACK

— .

✂

M

100% COTTON  
LINING 1  
100% POLYESTER  
FILLING  
100% POLYESTER  
MADE IN TURKEY

☑ ☒ ☑ ☒ ☒

MACHINE WASH COLD  
DO NOT BLEACH  
TUMBLE DRY LOW  
IRON LOW  
DO NOT DRY CLEAN

CA# 28629  
RN# 94974

HAVE A  
GOOD VIBE!!

PO# 000000  
STYLE# 000000

100% コットン  
裏地 1  
100% ポリエステル  
詰め物  
100% ポリエステル  
トルコ製

☑ ☒ ☑ ☒ ☒

(株)ジャック  
0548・22・7366

✂

### CB686688A - STS UNIVERSAL CL GARMENT - FC

FRENCH

LABEL #2

CHINESE

FRONT

BACK

— .

✂

M

100% COTON  
DOUBLURE 1  
100% POLYESTER  
REMBOURRAGE  
100% POLYESTER  
FABRIQUÉ EN  
TURQUIE

☑ ☒ ☑ ☒ ☒

LAVAGE MACHINE FROID  
NE PAS JAVELLISER  
BASSE TEMPERATURE  
FER BAS  
NE PAS NETTOYER

STUSSY, INC  
44 RUE DU TEMPLE  
75004 PARIS, FRANCE

175/92A

面料:100%棉  
里料1:100%聚酯纤维  
填充物:100%聚酯纤维  
产地:土耳其

☑ ☒ ☑ ☒ ☒

✂

NOTE: THESE ARE EXAMPLES OF LABELS AND NOT FINAL ART  
BOTH LABELS MUST BE SEWN IN PRODUCT



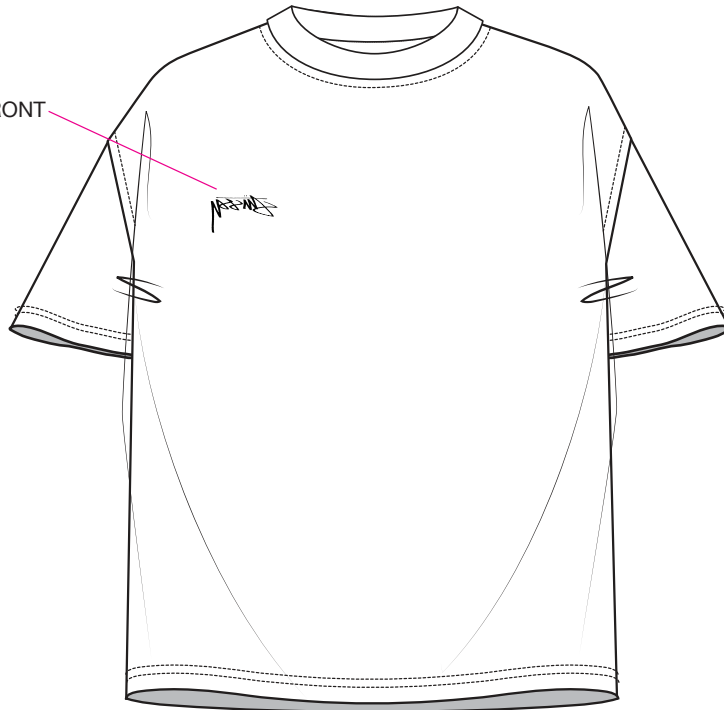
## STYLE #1140283 LAZY SS TEE

Stussy  
1 color print  
100% full size  
2" wide

PRINT ON THE OUTSIDE OF THE GARMENT, THEN TURN THE GARMENT INSIDE OUT  
SO THE LOGO IS ON THE LEFT CHEST AND WON'T BE BACKWARDS



SMOOTH STOCK PRINT  
8 5/8" DOWN FROM HPS  
2 3/4" FROM CENTER FRONT



PRINT PLACEMENT GUIDE