



STYLE #1140333 LAZY LS TEE



VINTAGE
BLACK



VINTAGE
NAVY



WHITE



STYLE #1140333 LAZY LS TEE

SEASON : FALL 25

STYLE NO.	1140333	VENDOR	UNAVAILABLE
STYLE NAME	LAZY LS TEE	CATEGORY	JERSEY
DESIGNER	DAN KIM	SIZE RUN	S, M, L, XL, XXL

FIT/STYLE REFERENCE

SEASON	STYLE NO.	STYLE NAME	REFERENCE DETAIL
SU24	1140333	LAZY LS TEE	

FABRICS, EMBELLISHMENT & WASH

FABRIC #1	100% DRY COTTON 190gms (AS HO23)	EMBELLISHMENT	PRINTED LOGO (PRINT ON INSIDE)
FABRIC #2	100% COTTON RIB	WASH	PIGMENT DYED

COLORWAY FABRIC AND TRIMS CHART

	COLORWAY 1	COLORWAY 2	
COLORWAY	VINTAGE BLACK	VINTAGE NAVY	
THREAD	DTM BODY	DTM BODY	
GARMENT	REFER TO SWATCH WE SENT	19-3832 TPG	
RIB	DTM BODY	DTM BODY	
JERSEY BINDING	DTM BODY	DTM BODY	
PRINT	BLACK	BLACK	
	COLORWAY 3		
COLORWAY	WHITE		
THREAD	DTM BODY		
GARMENT	OPTION A (PFD WHITE) OPTION B (11-0601 TPG)		
RIB	DTM BODY		
JERSEY BINDING	DTM BODY		
PRINT	BLACK		



STYLE #1140333 LAZY LS TEE

7/8" SET IN NECK TRIM
WITH 1/4" JERSEY BINDING OUTSIDE BACK NECK & SHOULDER SEAM
FOR CLEAN FINISH
CHAIN STITCH (OUTSIDE OF GARMENT)
1/4" SINGLE TOP STITCH AT NECK (INSIDE OF GARMENT)

CHAIN STITCH (OUTSIDE OF GARMENT)
1/4" SINGLE TOP STITCH AT ARMHOLE (INSIDE OF GARMENT)

PRINTED LOGO
PRINT ON INSIDE OF THE GARMENT
*REFER TO PAGE 6 GUIDE

CHAIN STITCH (OUTSIDE OF GARMENT)
1/4" SINGLE TOP STITCH AT CUFF MEETS SLEEVE (INSIDE OF GARMENT)

SIDE SEAM W/ COVER STITCHED

1" HEM STITCH
COVERSTITCHED



1/4" SINGLE TOP STITCH AT NECK & ARMHOLE (INSIDE OF GARMENT)



STYLE #1140333 LAZY LS TEE

NECK - OUTSIDE OF GARMENT



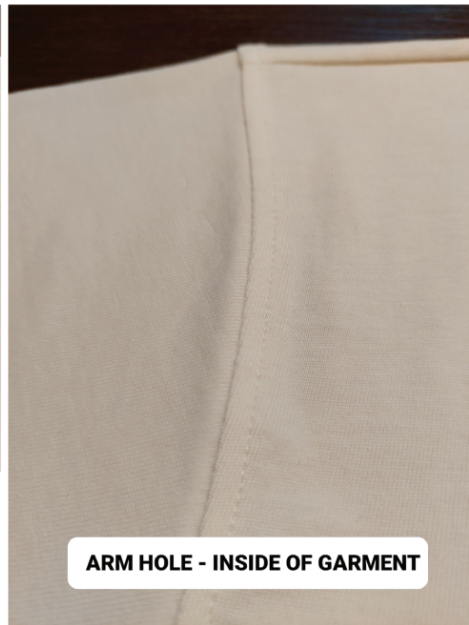
NECK - INSIDE OF GARMENT



ARM HOLE - OUTSIDE OF GARMENT



ARM HOLE - INSIDE OF GARMENT






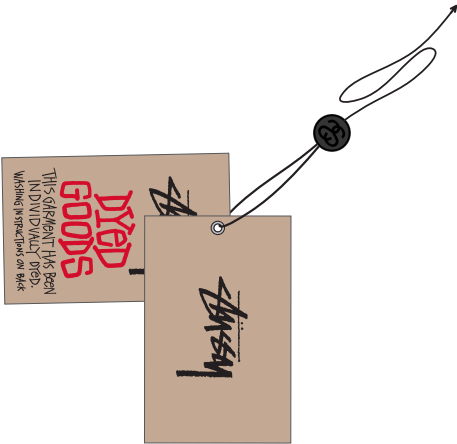
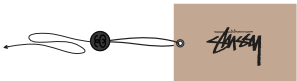


WE WANT ACTUAL INSIDE-OUT! (REFERENCE PHOTOS) - OUTSIDE OF GARMENT



STYLE #1140333 LAZY LS TEE

****VENDOR RESPONSIBLE FOR ORDERING AND PAYMENT TO ZABIN FOR ALL TRIMS ON THIS PAGE****

ZABIN #	NAME	IMAGE	PLACEMENT	QUANTITY
ZWVNL05	SMALL STOCK STRIP LABEL		SEWN INSIDE CENTER BACK NECK 1/2" DOWN FROM NECK SEAM	1
ZWVNL20	SIZE + COO LOOP LABEL MADE IN VIETNAM		CENTERED & SEWN INTO BOTTOM OF SMALL STOCK STRIP LABEL	1
ZDNA01	MINI AUTHENTIC LABEL		TOPS/JACKETS: SEWN INTO WEARER'S INTERIOR LEFT SIDE SEAM	1
SMST	UPC BARCODE STICKER (HANGTAG)		PLACE ON BACK OF HANGTAG	1
SMST	UPC BARCODE STICKER (POLY BAG)		PLACE ON THE OUTSIDE, FRONT LOWER RIGHT CORNER OF POLY BAG	1
ZHGT09	DYED GOODS LOCK UP WITH STRING (VINTAGE BLACK & VINTAGE NAVY)		LOOP STRING THROUGH COO LABEL AT CENTER BACK NECK	1
ZHGT08	STOCK HANGTAG WITH STRING (WHITE COLORWAY)		LOOP STRING THROUGH COO LABEL AT CENTER BACK NECK	1



AVERY DENISON CARE & CONTENT LABELS

ALL CARE AND CONTENT LABELS WILL BE ORDERED FROM AVERY DENISON.
ONLY THE ENGLISH NEEDS TO BE FILLED IN ON FORM.
AVERY DENISON WILL PROVIDE ALL OTHER LANGUAGES.
SEND COMPLETED ORDER FORM TO:
Selina Wang <selina.wang1@ap.averydennison.com>
Phone +86 20 32335525

CB681418A - STS UNIVERSAL CL GARMENT - EJ

ENGLISH

LABEL #1

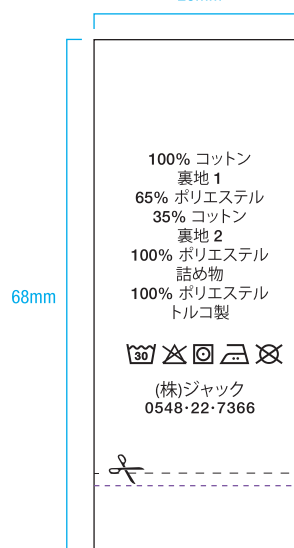
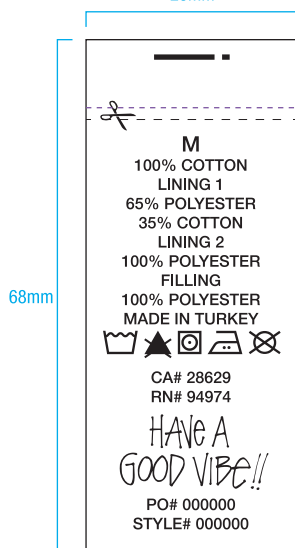
JAPANESE

FRONT

BACK

28mm

28mm



CB686688A - STS UNIVERSAL CL GARMENT - FC

FRENCH

LABEL #2

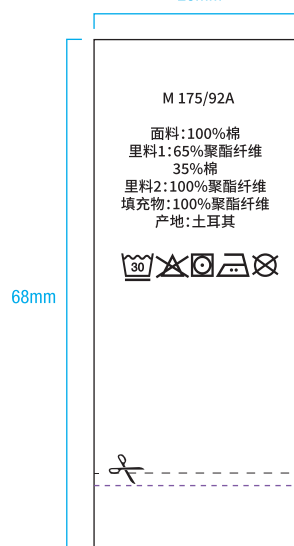
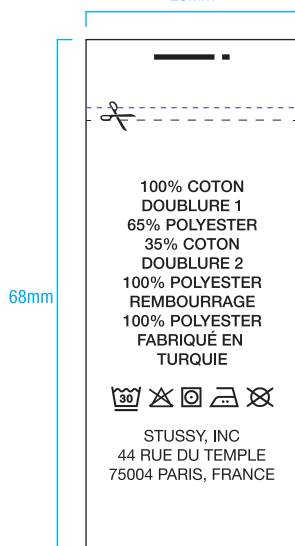
CHINESE

FRONT

BACK

28mm

28mm



**NOTE: THESE ARE EXAMPLES OF LABELS AND NOT FINAL ART
BOTH LABELS MUST BE SEWN IN PRODUCT**



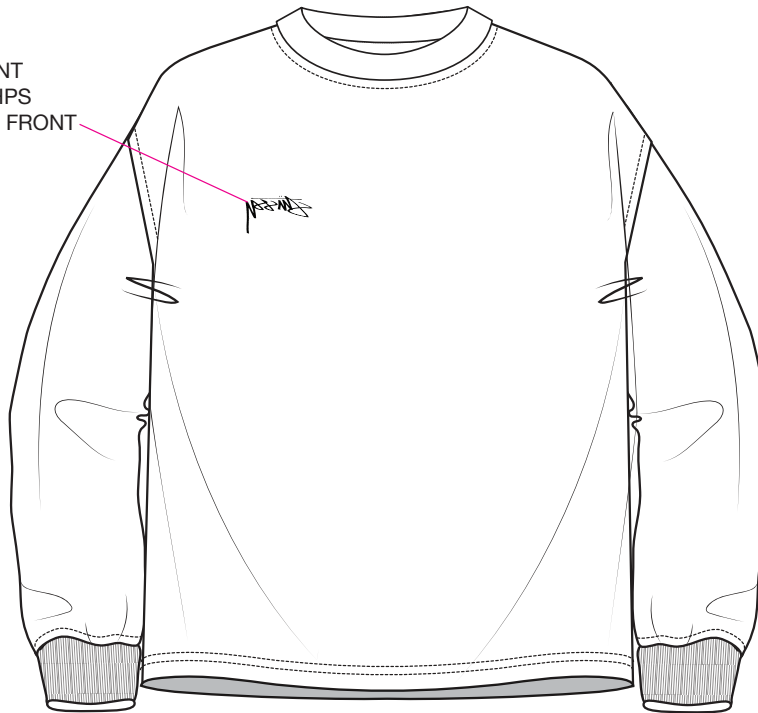
STYLE #1140333 LAZY LS TEE

Stussy
1 color print
100% full size
2" wide

PRINT ON THE OUTSIDE OF THE GARMENT, THEN TURN THE GARMENT INSIDE OUT
SO THE LOGO IS ON THE LEFT CHEST AND WON'T BE BACKWARDS



SMOOTH STOCK PRINT
8 5/8" DOWN FROM HPS
2 3/4" FROM CENTER FRONT



PRINT PLACEMENT GUIDE