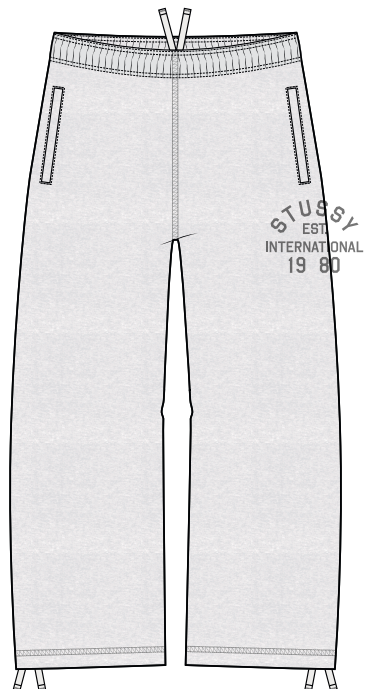
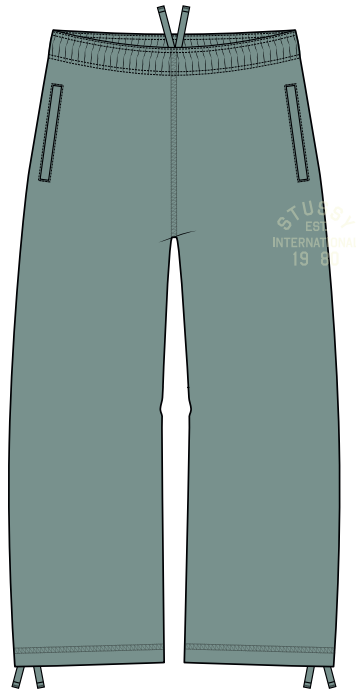




STYLE #116733 STUSSY EST FLEECE PANT





STYLE #116733 STUSSY EST FLEECE PANT

SEASON : FALL 25

STYLE NO.	116733	VENDOR	UNAVAILABLE
STYLE NAME	STUSSY EST FLEECE PANT	CATEGORY	FASHION FLEECE
DESIGNER	MEL	SIZE RUN	S, M, L, XL, XXL

FIT/STYLE REFERENCE

SEASON	STYLE NO.	STYLE NAME	REFERENCE DETAIL
HO25	116720	STRAIGHT LEG SWEATPANT	BASIC BODY SPEC

FABRIC(S)

FABRIC / SHELL

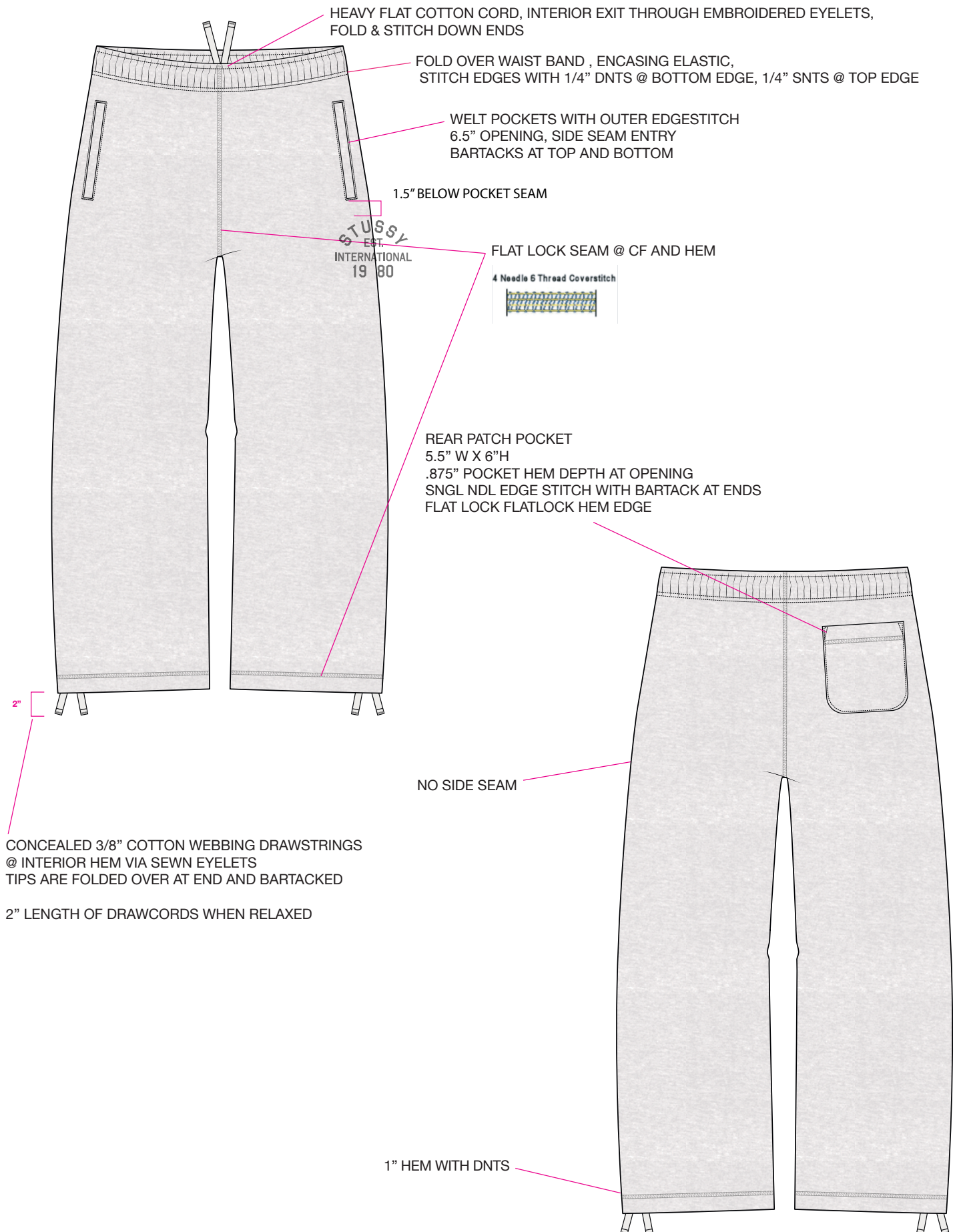
FABRIC / SHELL	66% COTTON 34% POLY 535 GSM (CAMBER “LOFTY” FLEECE)	EMBELLISHMENT	SCREEN PRINT
	FTY SOURCE JERSEY POCKETING	WASH	PIECE DYE+ POTASSIUM
THREAD SIZE	T40	SPI	10~12 SPI

COLORWAY FABRIC AND TRIMS CHART

[illegible]








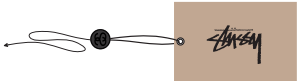
STYLE #116733 STUSSY EST FLEECE PANT





STYLE #116733 STUSSY EST FLEECE PANT

****VENDOR RESPONSIBLE FOR ORDERING AND PAYMENT TO ZABIN FOR ALL TRIMS ON THIS PAGE****

ZABIN #	NAME	IMAGE	PLACEMENT	QTY
ZWVNL21/BLK	STOCK LOOP LABEL		CENTER BACK WAIST	1
ZWVNL20	SIZE + COO LOOP LABEL MADE IN VIETNAM		SEWN NEXT TO ORIGINAL STOCK LOOP LABEL	1
ZDNA01	MINI AUTHENTIC DNA LABEL		SEWN INTO WEARER'S INTERIOR LEFT SIDE SEAM	1
SMST	UPC BARCODE STICKER (HANGTAG)		PLACE ON BACK OF HANGTAG	1
SMST	UPC BARCODE STICKER (POLY BAG)		PLACE ON THE OUTSIDE, FRONT LOWER RIGHT CORNER OF POLY BAG	1
ZHGT08	STOCK HANGTAG WITH STRING		LOOP STRING THROUGH COO LABEL AT CENTER BACK WAIST	1



AVERY DENISON CARE & CONTENT LABELS

ALL CARE AND CONTENT LABELS WILL BE ORDERED FROM AVERY DENISON.
ONLY THE ENGLISH NEEDS TO BE FILLED IN ON FORM.
AVERY DENISON WILL PROVIDE ALL OTHER LANGUAGES.

SEND COMPLETED ORDER FORM TO:

Selina Wang <selina.wang1@ap.averydennison.com>

Phone +86 20 32335525

CB681418A - STS UNIVERSAL CL GARMENT - EJ ENGLISH LABEL #1 JAPANESE

FRONT

28mm

68mm

M
100% COTTON
LINING 1
65% POLYESTER
35% COTTON
LINING 2
100% POLYESTER
FILLING
100% POLYESTER
MADE IN TURKEY

CA# 28629
RN# 94974

HAVE A
GOOD VIBE!!

PO# 000000
STYLE# 000000

BACK

28mm

68mm

100% コットン
裏地 1
65% ポリエステル
35% コットン
裏地 2
100% ポリエステル
詰め物
100% ポリエステル
トルコ製

(株)ジャック
0548-22-7366

CB686688A - STS UNIVERSAL CL GARMENT - FC FRENCH LABEL #2 CHINESE

FRONT

28mm

68mm

100% COTON
DOUBLURE 1
65% POLYESTER
35% COTON
DOUBLURE 2
100% POLYESTER
REMBOURRAGE
100% POLYESTER
FABRIQUÉ EN
TURQUIE

STUSSY, INC
44 RUE DU TEMPLE
75004 PARIS, FRANCE

BACK

28mm

68mm

M 175/92A
面料:100%棉
里料1:65%聚酯纤维
35%棉
里料2:100%聚酯纤维
填充物:100%聚酯纤维
产地:土耳其

NOTE: THESE ARE EXAMPLES OF LABELS AND NOT FINAL ART
BOTH LABELS MUST BE SEWN IN PRODUCT



STYLE #116733 STUSSY EST FLEECE PANT

1 COLOR SCREEN PRINT
WATERBASED INK
100% SCALE
5.5" W X 4.1"H
(SEE COLORS ON PG 2)
PRINT OPACITY 50%



STUSSY
EST.
INTERNATIONAL
19 80

