



STYLE #118583 FLEECE ZIP CREW



BLACK



FADED  
BLUE



RED



KHAKI



ASH HEATHER

STYLE #118583 FLEECE ZIP CREW

## FABRIC QUALITIES PROTO

**SEASON : FALL 25**

STYLE NO.	118583	VENDOR	UNAVAILABLE
STYLE NAME	FLEECE ZIP CREW	CATEGORY	FASHION FLEECE
DESIGNER	MEL	SIZE RUN	S, M, L, XL, XXL

## FIT/STYLE REFERENCE

SEASON	STYLE NO.	STYLE NAME	REFERENCE DETAIL
SP25	118577	STU APPLIQUE CREW	BASIC BODY SPEC... <b>FOLLOW SPEC PROVIDED</b>

**FABRIC(S)**

<b>FABRIC / SHELL</b>	C2303125 - LIGHT BRUSH FLEECE 100% COTTON B/W, WEIGHT:530 G/M2 SILVER MIX	<b>EMBELLISHMENT</b>	EXTERIOR LABEL
<b>RIB</b>	HEAVY COTTON OR COTTON POLY RIB (AS USED ON STHOODIE16 SAMPLE; BUT SLIGHTLY HEAVIER...FOLLOW FOR CONSTRUCTION, HANDFEEL AND RECOVERY)	<b>WASH</b>	PCE DYE, PP SPRAY (EXCEPT ASH HEATHER)
		<b>THREAD SIZE</b>	T40
<b>FABRIC 2 LINING</b>	COTTON OR COTTON POLY WAFFLE - FTY SOURCE, 250-300 GSM	<b>SPI</b>	10~12 SPI

## COLORWAY FABRIC AND TRIMS CHART

[illegible]

## ZIPPER NOMENCLATURE

[illegible]



STYLE #118583 FLEECE ZIP CREW

## DETAILS

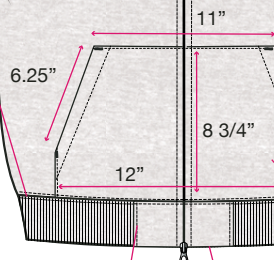
#5 YKK METAL ZIPPER  
ZIPPER SHOULD BE CONCEALED

### FRONT

STRADDLE STITCH

CENTER BACK SEAM BINDING - DTM  
CLEAN FINISH

WAFFLE LINED INTERIOR



WORKGEAR LABEL CENTERED OVER  
SIDE SEAM, 3.5" ABOVE EDGE OF HEM

1/4 SNTS

NO TS  
@ BOTTOM EDGE

2.5" 1X1 RIB HEM @ BODY & SLEEVE

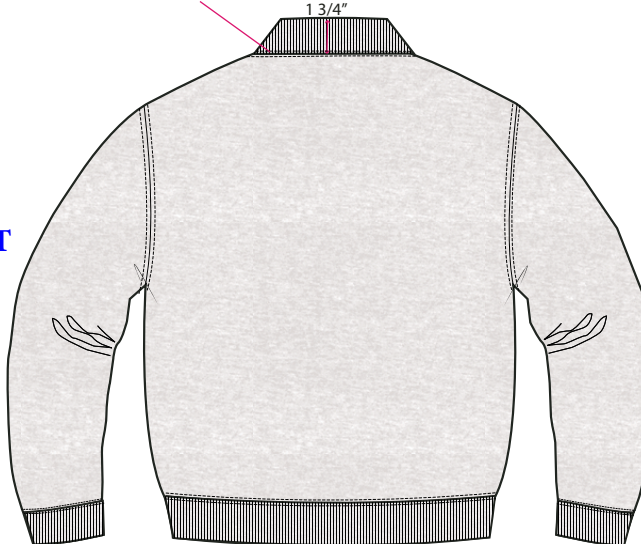
2 1/2" X 2 1/2" SELF INSERT  
@ CF

SELF POCKET (DO NOT LINE IN WAFFLE FABRIC)  
.875" POCKET HEM DEPTH AT OPENING  
SNGL NDL EDGE STITCH WITH  
BAR TACKS AT ENDS

### BACK

STRADDLE STITCH

1 3/4"






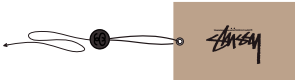



**DUYỆT QUY CÁCH MAY 2ND PROTO  
THEO MẪU 1ST PROTO + KÈM COMMENT  
CỦA MẪU 1ST PROTO ( XEM COMMENT  
VÀ BTS ĐÃ THAY ĐỔI)**



## STYLE #118583 FLEECE ZIP CREW

**\*\*VENDOR RESPONSIBLE FOR ORDERING AND PAYMENT TO ZABIN FOR ALL TRIMS ON THIS PAGE\*\***

ZABIN #	NAME	IMAGE	PLACEMENT	QTY
ZWVNL06	MED STOCK STRIP		SEWN INSIDE CENTER BACK NECK 1/2" DOWN FROM NECK SEAM	1
ZWVNL20	SIZE + COO LOOP LABEL MADE IN VIETNAM		CENTERED & SEWN INTO BOTTOM OF ORIGINAL LARGE STOCK LABEL	1
ZDNA01	MINI AUTHENTIC DNA LABEL		SEWN INTO WEARER'S INTERIOR LEFT SIDE SEAM	1
SMST	UPC BARCODE STICKER (HANGTAG)		PLACE ON BACK OF HANGTAG	1
SMST	UPC BARCODE STICKER (POLY BAG)		PLACE ON THE OUTSIDE, FRONT LOWER RIGHT CORNER OF POLY BAG	1
ZHGT08	STOCK HANGTAG WITH STRING		LOOP STRING THROUGH COO LABEL AT CENTER BACK NECK	1
ZWVNL35-BLK (BLACK CW)	AUTHENTIC WORKGEAR LABEL		*SEE DRAWING FOR PLACEMENT	1



STYLE #118583 FLEECE ZIP CREW  
AVERY DENISON CARE & CONTENT LABELS

ALL CARE AND CONTENT LABELS WILL BE ORDERED FROM AVERY DENISON.  
ONLY THE ENGLISH NEEDS TO BE FILLED IN ON FORM.  
AVERY DENISON WILL PROVIDE ALL OTHER LANGUAGES.

SEND COMPLETED ORDER FORM TO:  
Selina Wang <selina.wang1@ap.averydennison.com>  
Phone +86 20 32335525

CB681418A - STS UNIVERSAL CL GARMENT - EJ  
ENGLISH LABEL #1 JAPANESE

FRONT	BACK
28mm	28mm
68mm	68mm
<p>M 100% COTTON LINING 1 65% POLYESTER 35% COTTON LINING 2 100% POLYESTER FILLING 100% POLYESTER MADE IN TURKEY</p> <p>CA# 28629 RN# 94974</p> <p>HAVE A GOOD VIBE!!</p> <p>PO# 000000 STYLE# 000000</p>	<p>100% コットン 裏地 1 65% ポリエステル 35% コットン 裏地 2 100% ポリエステル 詰め物 100% ポリエステル トルコ製</p> <p>(株)ジャック 0548-22-7366</p>

CB686688A - STS UNIVERSAL CL GARMENT - FC  
FRENCH LABEL #2 CHINESE

FRONT	BACK
28mm	28mm
68mm	68mm
<p>100% COTON DOUBLURE 1 65% POLYESTER 35% COTON DOUBLURE 2 100% POLYESTER REMBOURRAGE 100% POLYESTER FABRIQUÉ EN TURQUIE</p> <p>STUSSY, INC 44 RUE DU TEMPLE 75004 PARIS, FRANCE</p>	<p>M 175/92A</p> <p>面料:100%棉 里料1:65%聚酯纤维 35%棉 里料2:100%聚酯纤维 填充物:100%聚酯纤维 产地:土耳其</p>

NOTE: THESE ARE EXAMPLES OF LABELS AND NOT FINAL ART  
BOTH LABELS MUST BE SEWN IN PRODUCT



FABRIC REFERENCE

**UnAvailable®**

<b>BUYER:</b>	STUSSY
<b>SEASON:</b>	SP25
<b>STYLE NAME:</b>	FLEECE RAGLAN HOOD
<b>STYLE NO:</b>	STHOODIE16
<b>ITEM:</b>	HOODIE
<b>SAMPLE TYPE:</b>	PROTO SAMPLE
<b>SIZE:</b>	M
<b>FABRIC:</b>	C2303125 - LIGHT BRUSH FLEECE 100% COTTON B/W Weight: 530g/m2
<b>COLOR:</b>	SILVER MIX
<b>DATE SENT:</b>	24/May/24
<b>SENT BY:</b>	THANH THI





# STYLE #118583 FLEECE ZIP CREW

INT. FACING DETAIL  
FOLLOW SELF FACING AS PER STCREW11 PROTO SAMPLE  
(DO NOT FOLLOW FOR FABRIC, QUILTING, OR LINING)

