



WASHED BLACK



NAVY



ASH HEATHER

STYLE #118570 FLEECE RAGLAN CREW

SEASON : FA25

STYLE NO.	118570	VENDOR	UNAVAILABLE
STYLE NAME	FLEECE RAGLAN CREW	CATEGORY	FLEECE
DESIGNER	MEL	SIZE RUN	S, M, L, XL, XXL

FIT/STYLE REFERENCE

SEASON	STYLE NO.	STYLE NAME	REFERENCE DETAIL
FA24	118570	FLEECE RAGLAN CREW	BASIC BODY SPEC

FABRIC(S)

FABRIC / SHELL	66% COTTON 34% POLY 535GSM (CAMBER "LOFTY" FLEECE)	EMBELLISHMENT	WORKGEAR LABEL
FABRIC #2	97% COTTON 3% SPANDEX RIB (AS SP25)	DYE/WASH	PC DYE + POTASSIUM, GARMENT WASH
THREAD SIZE	T40	SPI	10~12 SPI

COLORWAY FABRIC AND TRIMS CHART

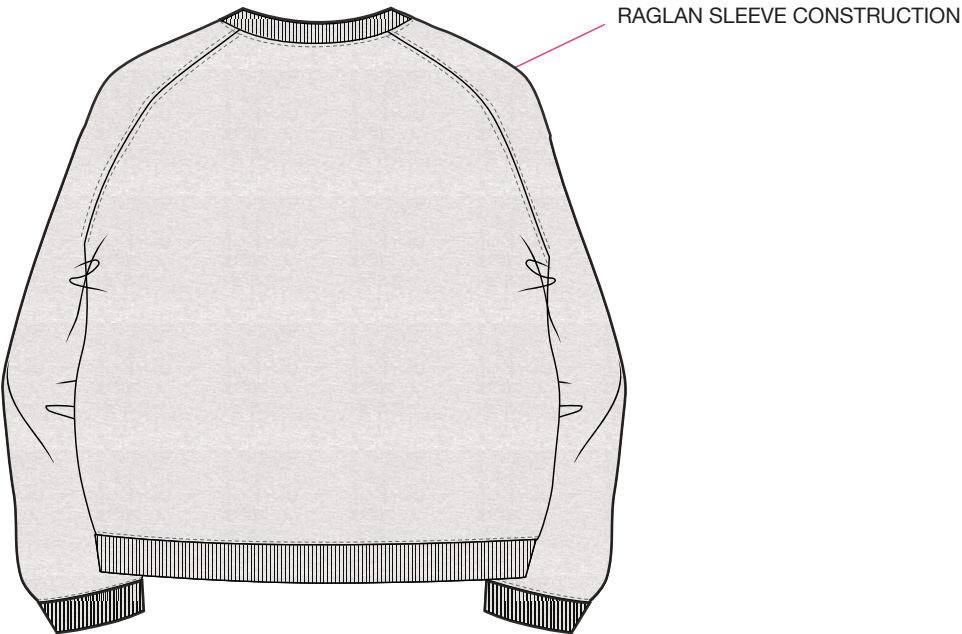
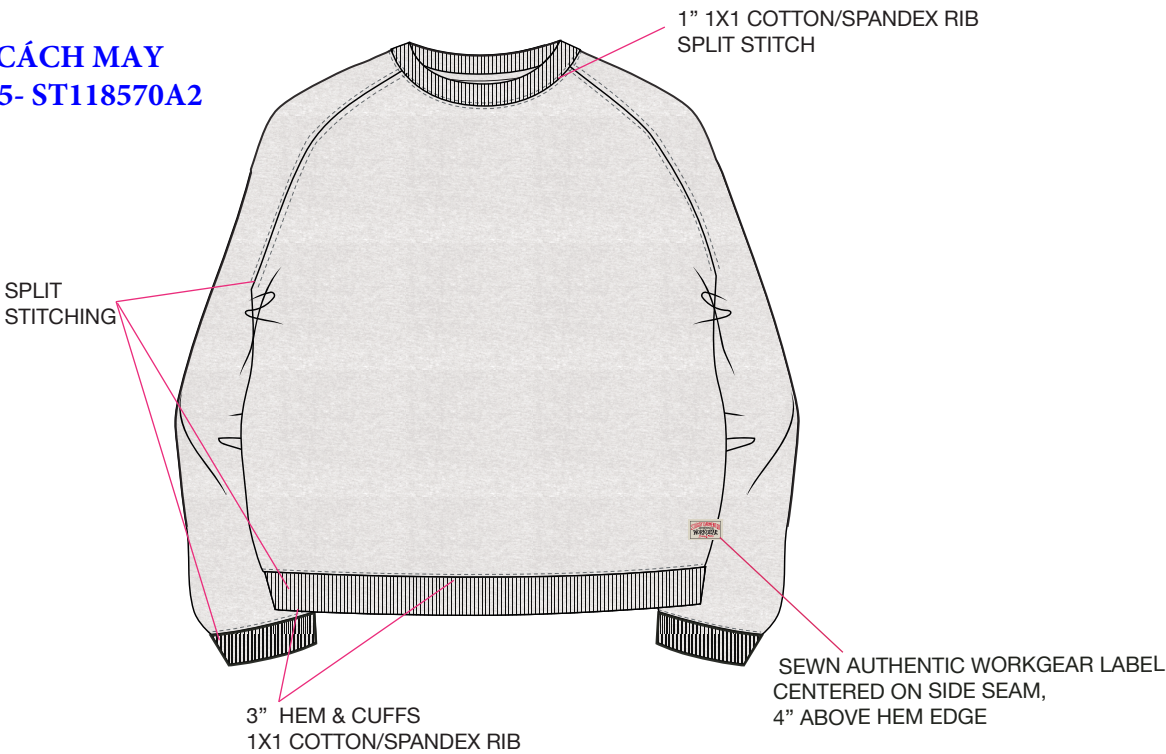
[illegible]

ASH HEATHER AS PER - STYLE #118578 STU APPLIQUE HOOD



DETAILS






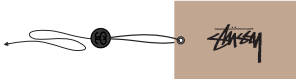

THAM KHẢO QUY CÁCH MAY
NHƯ MẪU PPS- SP25- ST118570A2





STYLE #118570 FLEECE RAGLAN CREW

****VENDOR RESPONSIBLE FOR ORDERING AND PAYMENT TO ZABIN FOR ALL TRIMS ON THIS PAGE****

ZABIN #	NAME	IMAGE	PLACEMENT	QTY
ZWVNL06	MED STOCK STRIP		SEWN INSIDE CENTER BACK NECK 1/2" DOWN FROM NECK SEAM	1
ZWVNL20	SIZE + COO LOOP LABEL MADE IN VIETNAM		CENTERED & SEWN INTO BOTTOM OF ORIGINAL LARGE STOCK LABEL	1
ZDNA01	MINI AUTHENTIC DNA LABEL		SEWN INTO WEARER'S INTERIOR LEFT SIDE SEAM	1
SMST	UPC BARCODE STICKER (HANGTAG)		PLACE ON BACK OF HANGTAG	1
SMST	UPC BARCODE STICKER (POLY BAG)		PLACE ON THE OUTSIDE, FRONT LOWER RIGHT CORNER OF POLY BAG	1
ZHGT08	STOCK HANGTAG WITH STRING		LOOP STRING THROUGH COO LABEL AT CENTER BACK NECK	1
ZWVNL35	AUTHENTIC WORKGEAR LABEL		SEWN OVER THE SIDE SEAM (CENTERED) ON WEARER'S LEFT SIDE 2.5 ABOVE HEM EDGE	1



AVERY DENISON CARE & CONTENT LABELS - GARMENTS

ALL CARE AND CONTENT LABELS WILL BE ORDERED FROM AVERY DENISON.
ONLY THE ENGLISH NEEDS TO BE FILLED OUT ON THE FORM.
AVERY DENISON WILL PROVIDE ALL OTHER LANGUAGES.

SEND COMPLETED ORDER FORM TO:

Selina Wang <selina.wang1@ap.averydennison.com>

Phone +86 20 32335525

CB681418A - STS UNIVERSAL CL GARMENT - EJ

ENGLISH

LABEL #1

JAPANESE

FRONT

BACK

— —

✂

M

100% COTTON
LINING 1
100% POLYESTER
FILLING
100% POLYESTER
MADE IN TURKEY

☐☑☐☐☑

MACHINE WASH COLD
DO NOT BLEACH
TUMBLE DRY LOW
IRON LOW
DO NOT DRY CLEAN

CA# 28629
RN# 94974

HAVE A
GOOD VIBE!!

PO# 000000
STYLE# 000000

100% コットン
裏地 1
100% ポリエステル
詰め物
100% ポリエステル
トルコ製

☐☑☐☐☑

(株)ジャック
0548・22・7366

✂

CB686688A - STS UNIVERSAL CL GARMENT - FC

FRENCH

LABEL #2

CHINESE

FRONT

BACK

— —

✂

M

100% COTON
DOUBLURE 1
100% POLYESTER
REMBOURRAGE
100% POLYESTER
FABRIQUÉ EN
TURQUIE

☐☑☐☐☑

LAVAGE MACHINE FROID
NE PAS JAVELLISER
BASSE TEMPERATURE
FER BAS
NE PAS NETTOYER

STUSSY, INC
44 RUE DU TEMPLE
75004 PARIS, FRANCE

175/92A

面料:100%棉
里料1:100%聚酯纤维
填充物:100%聚酯纤维
产地:土耳其

☐☑☐☐☑

✂

NOTE: THESE ARE EXAMPLES OF LABELS AND NOT FINAL ART
BOTH LABELS MUST BE SEWN IN PRODUCT



STYLE #118570 FLEECE RAGLAN CREW

FOLLOW REF. BELOW FOR SLIGHT SUN FADE WORN IN LOOK

