



STYLE #1140333 LAZY LS TEE



FADED BLACK



BRICK



SAGE



BONE





STYLE #1140333 LAZY LS TEE

SEASON : SPRING 24

STYLE NO.	1140333	VENDOR	UNAVAILABLE
STYLE NAME	LAZY LS TEE	CATEGORY	JERSEY
DESIGNER	DAN KIM	SIZE RUN	S, M, L, XL, XXL

FIT/STYLE REFERENCE

SEASON	STYLE NO.	STYLE NAME	REFERENCE DETAIL
HO23	1140333	PIGMENT DYED INSIDE OUT LS CREW	

FABRICS, EMBELLISHMENT & WASH

FABRIC #1	100% DRY COTTON 190gms (AS HO23)	EMBELLISHMENT	PRINTED LOGO ( PRINT ON INSIDE)
FABRIC #2	100% COTTON RIB	WASH	PIGMENT DYED

COLORWAY FABRIC AND TRIMS CHART

	COLORWAY 1	COLORWAY 2	
COLORWAY	FADED BLACK	BRICK	
THREAD	DTM BODY	DTM BODY	
GARMENT	BLACK (19-0506 TPG) - CARRY OVER COLOR SAME AS HO23	OPTION A- 18-1434 TPG, OPTION B- 18-1438 TPG	
RIB	DTM BLACK	DTM BRICK	
JERSEY BINDING	DTM BLACK	DTM BRICK	
PRINT	BLACK	BLACK	
	COLORWAY 3	COLORWAY 4	
COLORWAY	SAGE	BONE	
THREAD	DTM BODY	DTM BODY	
GARMENT	OPTION A- 16-0110 TPG, OPTION B- 15-6310 TPG	CARRY OVER COLOR SAME AS HO23	
RIB	DTM SAGE	DTM BONE	
JERSEY BINDING	DTM SAGE	DTM BONE	
PRINT	BLACK	BLACK	



## STYLE #1140333 LAZY LS TEE

7/8" SET IN NECK TRIM  
WITH 1/4" JERSEY BINDING OUTSIDE BACK NECK & SHOULDER SEAM  
FOR CLEAN FINISH  
CHAIN STITCH (OUTSIDE OF GARMENT)  
1/4" SINGLE TOP STITCH AT NECK (INSIDE OF GARMENT)

CHAIN STITCH (OUTSIDE OF GARMENT)  
1/4" SINGLE TOP STITCH AT ARMHOLE (INSIDE OF GARMENT)

PRINTED LOGO  
PRINT ON INSIDE OF THE GARMENT  
\*REFER TO PAGE 6 GUIDE

CHAIN STITCH (OUTSIDE OF GARMENT)  
1/4" SINGLE TOP STITCH AT CUFF MEETS SLEEVE (INSIDE OF GARMENT)

SIDE SEAM W/ COVER STITCHED

1" HEM STITCH  
COVERSTITCHED



\*1/4" SINGLE TOP STITCH AT NECK & ARMHOLE (INSIDE OF GARMENT)\*



STYLE #1140333 LAZY LS TEE

**NECK - OUTSIDE OF GARMENT**



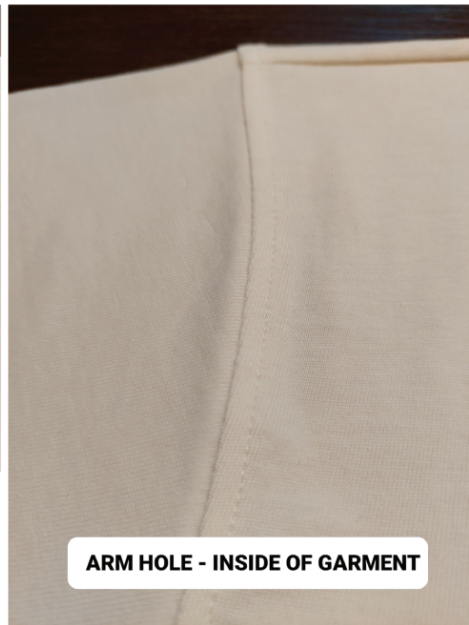
**NECK - INSIDE OF GARMENT**



**ARM HOLE - OUTSIDE OF GARMENT**



**ARM HOLE - INSIDE OF GARMENT**









**WE WANT ACTUAL INSIDE-OUT! (REFERENCE PHOTOS) - OUTSIDE OF GARMENT**





## STYLE #1140333 LAZY LS TEE

**\*\*VENDOR RESPONSIBLE FOR ORDERING AND PAYMENT TO ZABIN FOR ALL TRIMS ON THIS PAGE\*\***

ZABIN #	NAME	IMAGE	PLACEMENT	QUANTITY
ZWVNL05	SMALL STOCK STRIP LABEL		SEWN INSIDE CENTER BACK NECK 1/2" DOWN FROM NECK SEAM	1
ZWVNL20	SIZE + COO LOOP LABEL MADE IN VIETNAM		CENTERED & SEWN INTO BOTTOM OF SMALL STOCK STRIP LABEL	1
ZDNA01	MINI AUTHENTIC LABEL		<b>TOPS/JACKETS:</b> SEWN INTO WEARER'S INTERIOR LEFT SIDE SEAM	1
SMST	UPC BARCODE STICKER (HANGTAG)		PLACE ON BACK OF HANGTAG	1
SMST	UPC BARCODE STICKER (POLY BAG)		PLACE ON THE OUTSIDE, FRONT LOWER RIGHT CORNER OF POLY BAG	1
ZHGT09	DYED GOODS LOCK UP WITH STRING		LOOP STRING THROUGH COO LABEL AT CENTER BACK NECK	1



## AVERY DENISON CARE & CONTENT LABELS

ALL CARE AND CONTENT LABELS WILL BE ORDERED FROM AVERY DENISON.  
ONLY THE ENGLISH NEEDS TO BE FILLED IN ON FORM.  
AVERY DENISON WILL PROVIDE ALL OTHER LANGUAGES.  
SEND COMPLETED ORDER FORM TO:  
Selina Wang <selina.wang1@ap.averydennison.com>  
Phone +86 20 32335525

### CB681418A - STS UNIVERSAL CL GARMENT - EJ

#### ENGLISH

#### LABEL #1

#### JAPANESE

FRONT

BACK

28mm

28mm

68mm

— —

✂

M

100% COTTON  
LINING 1  
65% POLYESTER  
35% COTTON  
LINING 2  
100% POLYESTER  
FILLING  
100% POLYESTER  
MADE IN TURKEY

☐ ☒ ☑ ☐ ☒

CA# 28629  
RN# 94974

HAVE A  
GOOD VIBE!!

PO# 000000  
STYLE# 000000

68mm

100% コットン  
裏地 1  
65% ポリエステル  
35% コットン  
裏地 2  
100% ポリエステル  
詰め物  
100% ポリエステル  
トルコ製

☐ ☒ ☑ ☐ ☒

(株)ジャック  
0548・22・7366

✂

### CB686688A - STS UNIVERSAL CL GARMENT - FC

#### FRENCH

#### LABEL #2

#### CHINESE

FRONT

BACK

28mm

28mm

68mm

— —

✂

100% COTON  
DOUBLURE 1  
65% POLYESTER  
35% COTON  
DOUBLURE 2  
100% POLYESTER  
REMBOURRAGE  
100% POLYESTER  
FABRIQUÉ EN  
TURQUIE

☐ ☒ ☑ ☐ ☒

STUSSY, INC  
44 RUE DU TEMPLE  
75004 PARIS, FRANCE

68mm

M 175/92A

面料:100%棉  
里料1:65%聚酯纤维  
35%棉  
里料2:100%聚酯纤维  
填充物:100%聚酯纤维  
产地:土耳其

☐ ☒ ☑ ☐ ☒

✂

NOTE: THESE ARE EXAMPLES OF LABELS AND NOT FINAL ART  
BOTH LABELS MUST BE SEWN IN PRODUCT



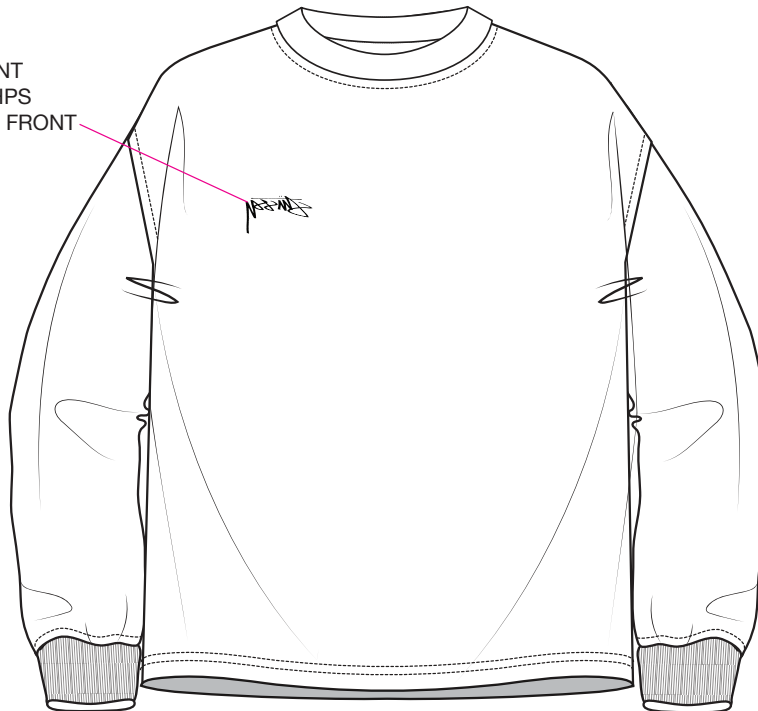
## STYLE #1140333 LAZY LS TEE

Stussy  
1 color print  
100% full size  
2" wide

PRINT ON THE OUTSIDE OF THE GARMENT, THEN TURN THE GARMENT INSIDE OUT  
SO THE LOGO IS ON THE LEFT CHEST AND WON'T BE BACKWARDS



SMOOTH STOCK PRINT  
8 5/8" DOWN FROM HPS  
2 3/4" FROM CENTER FRONT



PRINT PLACEMENT GUIDE