

STUSSY

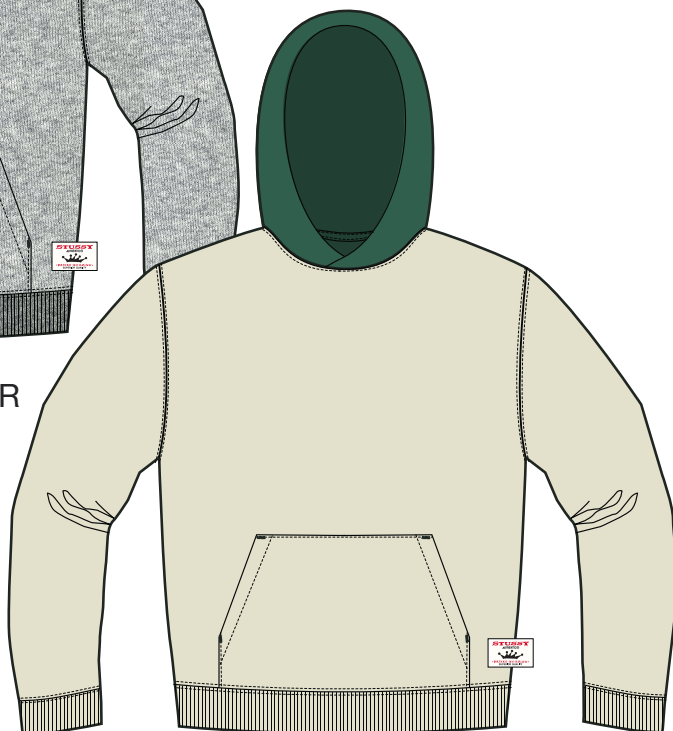
STYLE #118584 TWO TONE HOOD



FADED BLUE



GREY HEATHER



BIRCH





STYLE #118584 TWO TONE HOOD

SEASON: FALL 25

STYLE NO.	118584	VENDOR	UNAVAILABLE
STYLE NAME	TWO TONE HOOD	CATEGORY	FASHION FLEECE
DESIGNER	MEL	SIZE RUN	S, M, L, XL, XXL

FIT/STYLE REFERENCE

SEASON	STYLE NO.	STYLE NAME	REFERENCE DETAIL
SP25	118578	STU APPLIQUE HOOD	BASIC BODY SPEC...DETAILS AS SKETCH
			3" RIB AND NO DRAWCORD/EYELETS

FABRIC(S)

FABRIC / SHELL	66% COTTON 34% POLY 490-500GSM (CAMBER “LOFTY” FLEECE)	EMBELLISHMENT	EXT. WOVEN LABEL
FABRIC #2	1X1 COTTON RIB	WASH	PC DYE + POTASSIUM, ENZYME GARMENT WASH
THREAD SIZE	T40	SPI	10~12 SPI

COLORWAY FABRIC AND TRIMS CHART

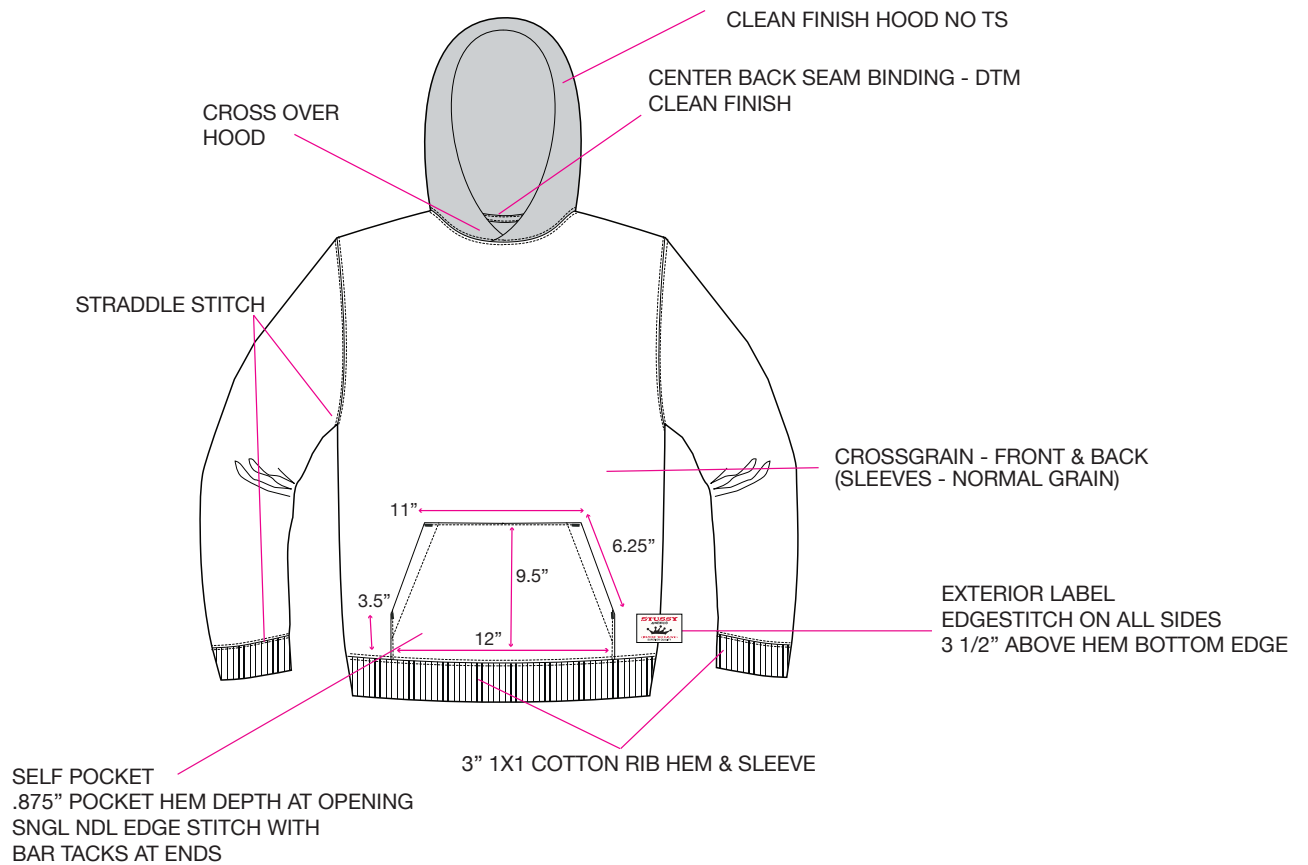
[illegible]



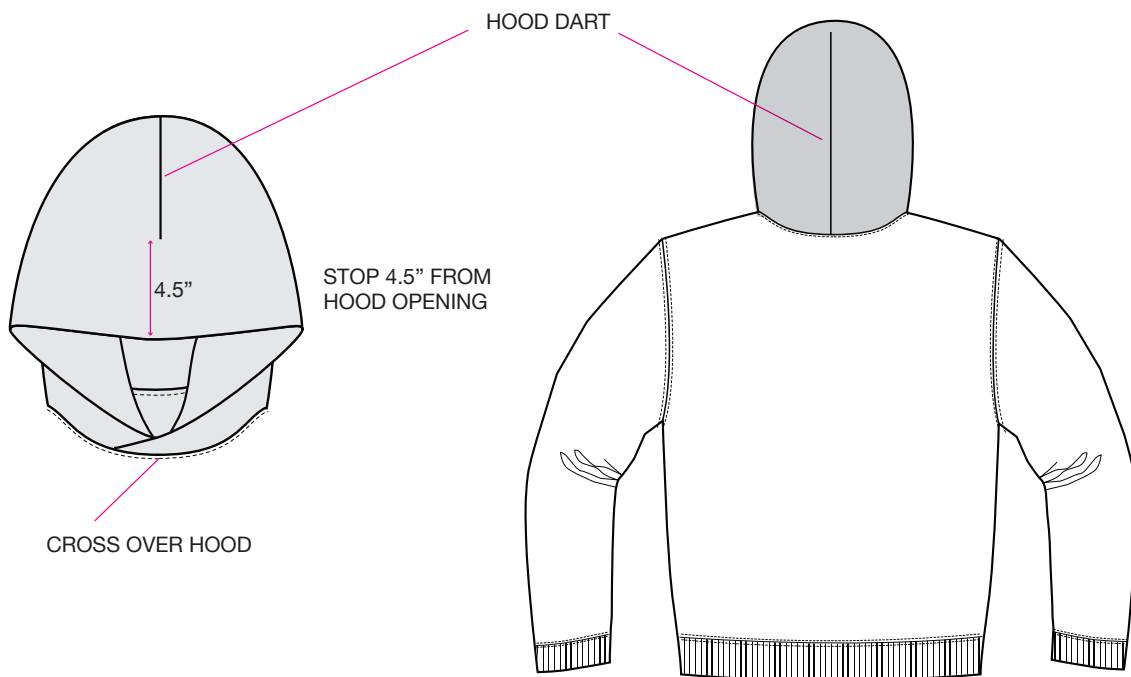
STYLE #118584 TWO TONE HOOD

DETAILS

FRONT








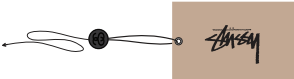

BACK





STYLE #118584 TWO TONE HOOD

****VENDOR RESPONSIBLE FOR ORDERING AND PAYMENT TO ZABIN FOR ALL TRIMS ON THIS PAGE****

ZABIN #	NAME	IMAGE	PLACEMENT	QTY
ZWVNL06	MED STOCK STRIP		SEWN INSIDE CENTER BACK NECK 1/2" DOWN FROM NECK SEAM	1
ZWVNL20	SIZE + COO LOOP LABEL MADE IN VIETNAM		CENTERED & SEWN INTO BOTTOM OF ORIGINAL LARGE STOCK LABEL	1
ZDNA01	MINI AUTHENTIC DNA LABEL		SEWN INTO WEARER'S INTERIOR LEFT SIDE SEAM	1
SMST	UPC BARCODE STICKER (HANGTAG)		PLACE ON BACK OF HANGTAG	1
SMST	UPC BARCODE STICKER (POLY BAG)		PLACE ON THE OUTSIDE, FRONT LOWER RIGHT CORNER OF POLY BAG	1
ZHGT08	STOCK HANGTAG WITH STRING		LOOP STRING THROUGH COO LABEL AT CENTER BACK NECK	1
ZWVNL67	BUILT TO LAST LABEL		SEWN OVER THE SIDE SEAM (CENTERED) ON WEARER'S LEFT SIDE 3 1/2" ABOVE HEM EDGE	1



STYLE #118584 TWO TONE HOOD
AVERY DENISON CARE & CONTENT LABELS

ALL CARE AND CONTENT LABELS WILL BE ORDERED FROM AVERY DENISON.
ONLY THE ENGLISH NEEDS TO BE FILLED IN ON FORM.
AVERY DENISON WILL PROVIDE ALL OTHER LANGUAGES.

SEND COMPLETED ORDER FORM TO:

Selina Wang <selina.wang1@ap.averydennison.com>

Phone +86 20 32335525

CB681418A - STS UNIVERSAL CL GARMENT - EJ
ENGLISH LABEL #1 JAPANESE

FRONT 28mm	BACK 28mm
<div>68mm</div> <div><p>M</p><p>100% COTTON LINING 1 65% POLYESTER 35% COTTON LINING 2 100% POLYESTER FILLING 100% POLYESTER MADE IN TURKEY</p><p>CA# 28629 RN# 94974</p><p>HAVE A GOOD VIBE!!</p><p>PO# 000000 STYLE# 000000</p></div>	<div>68mm</div> <div><p>100% コットン 裏地 1 65% ポリエステル 35% コットン 裏地 2 100% ポリエステル 詰め物 100% ポリエステル トルコ製</p><p>(株)ジャック 0548-22-7366</p></div>

CB686688A - STS UNIVERSAL CL GARMENT - FC
FRENCH LABEL #2 CHINESE

FRONT 28mm	BACK 28mm
<div>68mm</div> <div><p>100% COTON DOUBLURE 1 65% POLYESTER 35% COTON DOUBLURE 2 100% POLYESTER REMBOURRAGE 100% POLYESTER FABRIQUÉ EN TURQUIE</p><p>STUSSY, INC 44 RUE DU TEMPLE 75004 PARIS, FRANCE</p></div>	<div>68mm</div> <div><p>M 175/92A</p><p>面料:100%棉 里料1:65%聚酯纤维 35%棉 里料2:100%聚酯纤维 填充物:100%聚酯纤维 产地:土耳其</p></div>

NOTE: THESE ARE EXAMPLES OF LABELS AND NOT FINAL ART
BOTH LABELS MUST BE SEWN IN PRODUCT



STYLE #118584 TWO TONE HOOD

FOLLOW REF. BELOW FOR SLIGHT SUN FADE WORN IN LOOK

