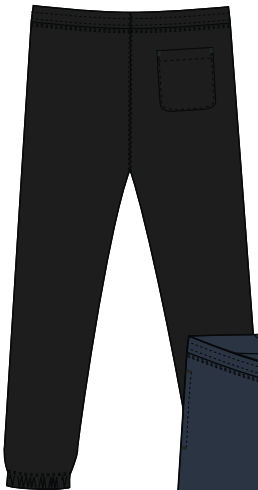
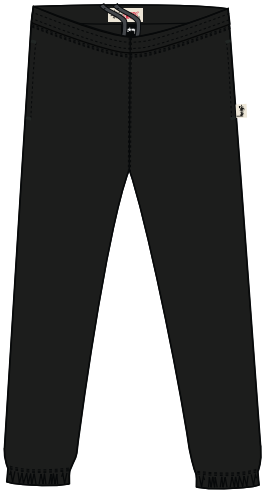
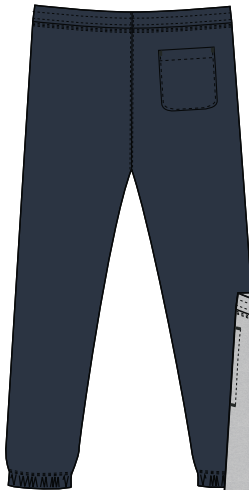
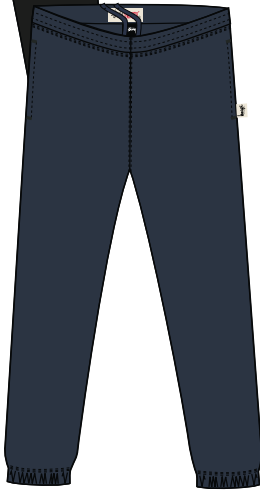




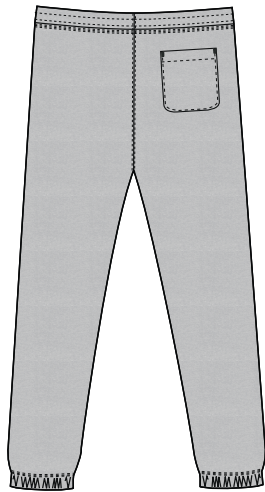
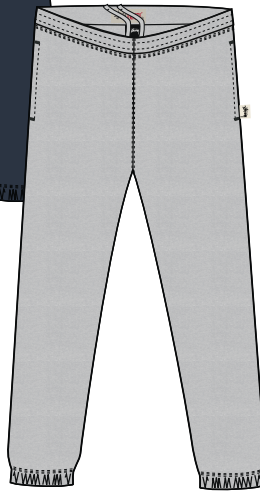
STYLE # 116753 FLEECE PANT



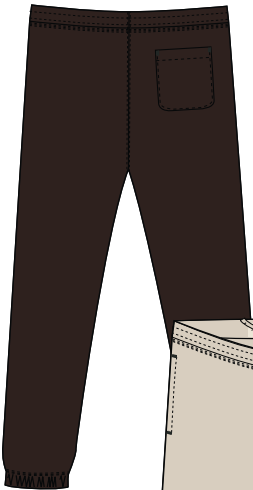
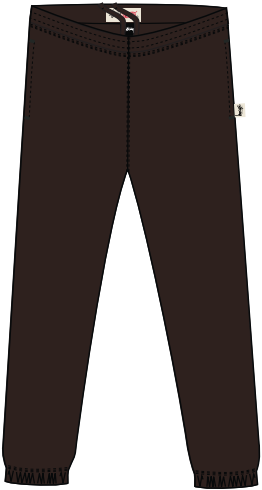
BLACK



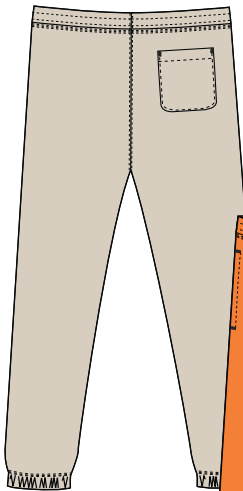
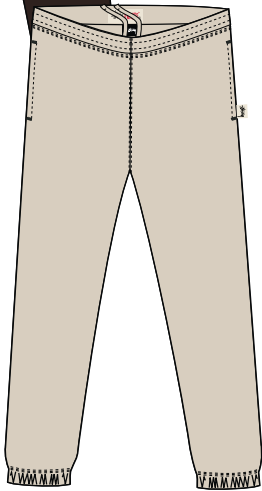
NAVY



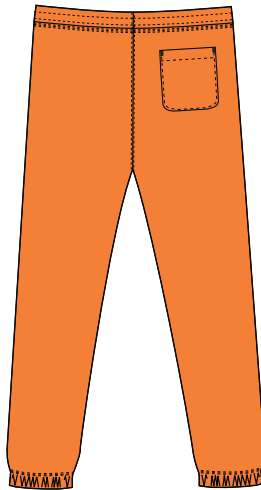
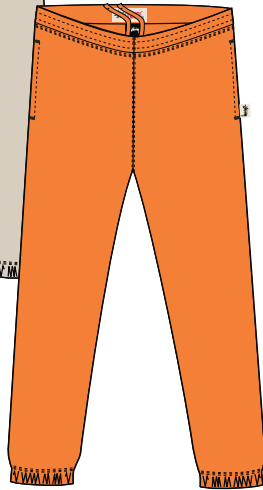
DARK GREY
HEATHER



BROWN



SAND



ORANGE



STYLE # 116753 FLEECE PANT

SEASON : FALL 26

| | | | |
|------------|-----------------|----------|---|
| STYLE NO. | 116753 | VENDOR | UNAVAILABLE |
| STYLE NAME | FLEECE PANT | CATEGORY | BOTTOM (ELASTIC WAIST) / FASHION FLEECE |
| DESIGNER | NOEMIE AL HOMSI | SIZE RUN | S, M, L, XL, XXL |

FIT/STYLE REFERENCE

| | | | |
|--------|-----------|-------------|---------------------------|
| SEASON | STYLE NO. | STYLE NAME | REFERENCE DETAIL |
| SP26 | 116753 | FLEECE PANT | BASIC BODY SPEC, DETAILS, |
| | | | |

FABRIC(S)

| | | | |
|----------------|--|---------------|---------------------------------------|
| FABRIC / SHELL | 66% COTTON 34% POLY 535GSM (CAMBER "LOFTY" FLEECE) | EMBELLISHMENT | BIG STOCK FLAG & STUSSY SWEATS LABELS |
| FABRIC #2 | | WASH | PC DYE + POTASSIUM |
| THREAD SIZE | T40 | SPI | 10~12 SPI |

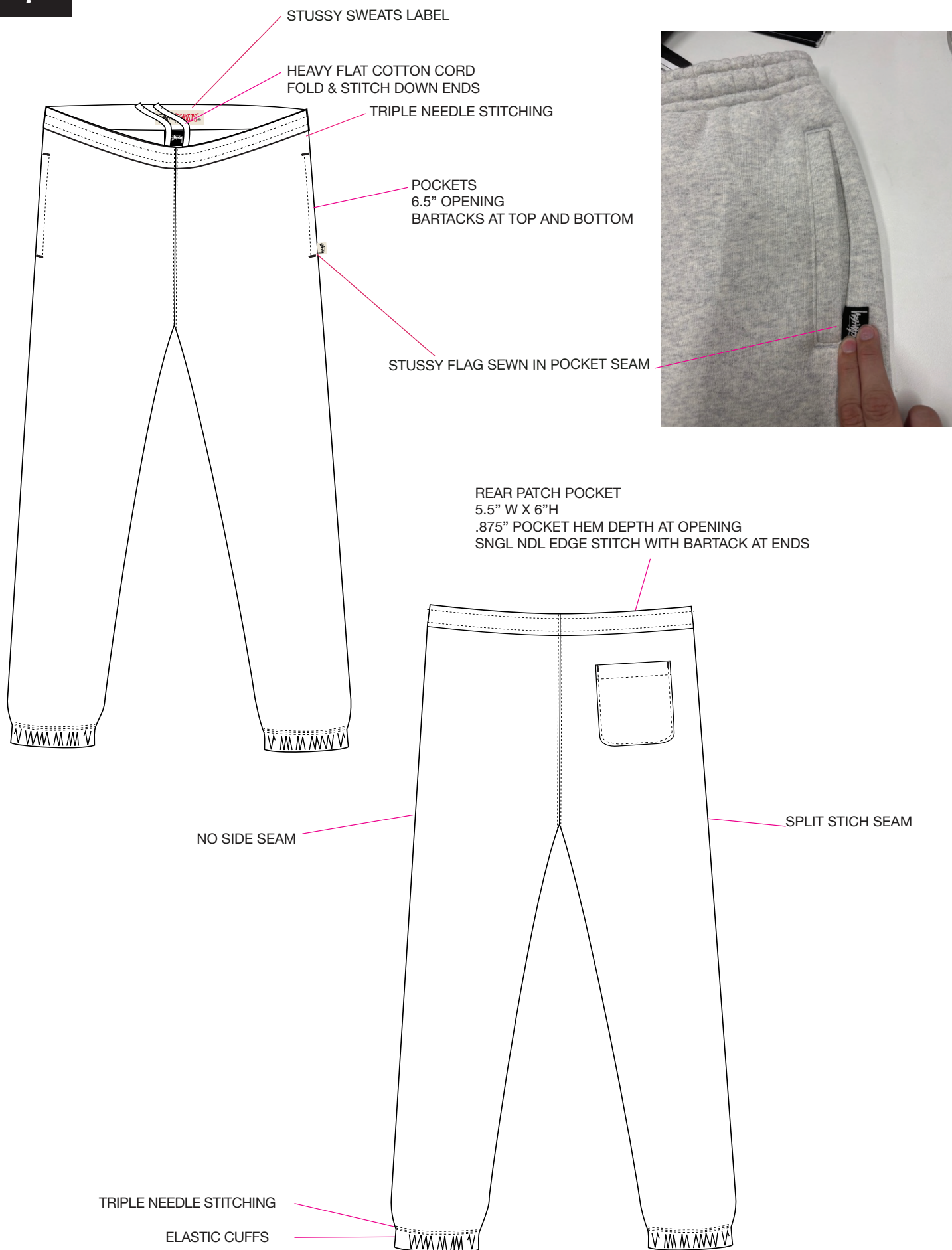
COLORWAY FABRIC AND TRIMS CHART

| | COLORWAY 1 | COLORWAY 2 | COLORWAY 3 | COLORWAY 4 | COLORWAY 5 | COLORWAY 6 |
|--------------|---------------------------------------|------------------------|------------------------|------------------------|----------------------------|----------------------------|
| COLORWAY | BLACK | NAVY | DARK GREY HEATHER | BROWN | SAND | ORANGE |
| FABRIC | 19-4008 TCX (LESS WASH THAN PREVIOUS) | PLEASE SEE SENT SWATCH | PLEASE SEE SENT SWATCH | PLEASE SEE SENT SWATCH | PLEASE SEE THE SENT SWATCH | PLEASE SEE THE SENT SWATCH |
| THREAD COLOR | DTM | DTM | DTM | DTM | DTM | DTM |
| DRAWCORD | DTM | DTM | DTM | DTM | DTM | DTM |
| EYELET | DTM | DTM | DTM | DTM | DTM | DTM |
| ELASTIC | WHITE | WHITE | WHITE | WHITE | WHITE | WHITE |
| | | | | | | |
| | | | | | | |
| | | | | | | |
| | | | | | | |
| | | | | | | |
| | | | | | | |
| | | | | | | |
| | | | | | | |
| | | | | | | |
| | | | | | | |
| | | | | | | |
| | | | | | | |
| | | | | | | |
| | | | | | | |

ADDITIONAL LAB DIPS: PLEASE SEE REFERENCES SENT








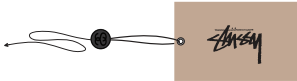


STYLE # 116753 FLEECE PANT





STYLE # 116753 FLEECE PANT

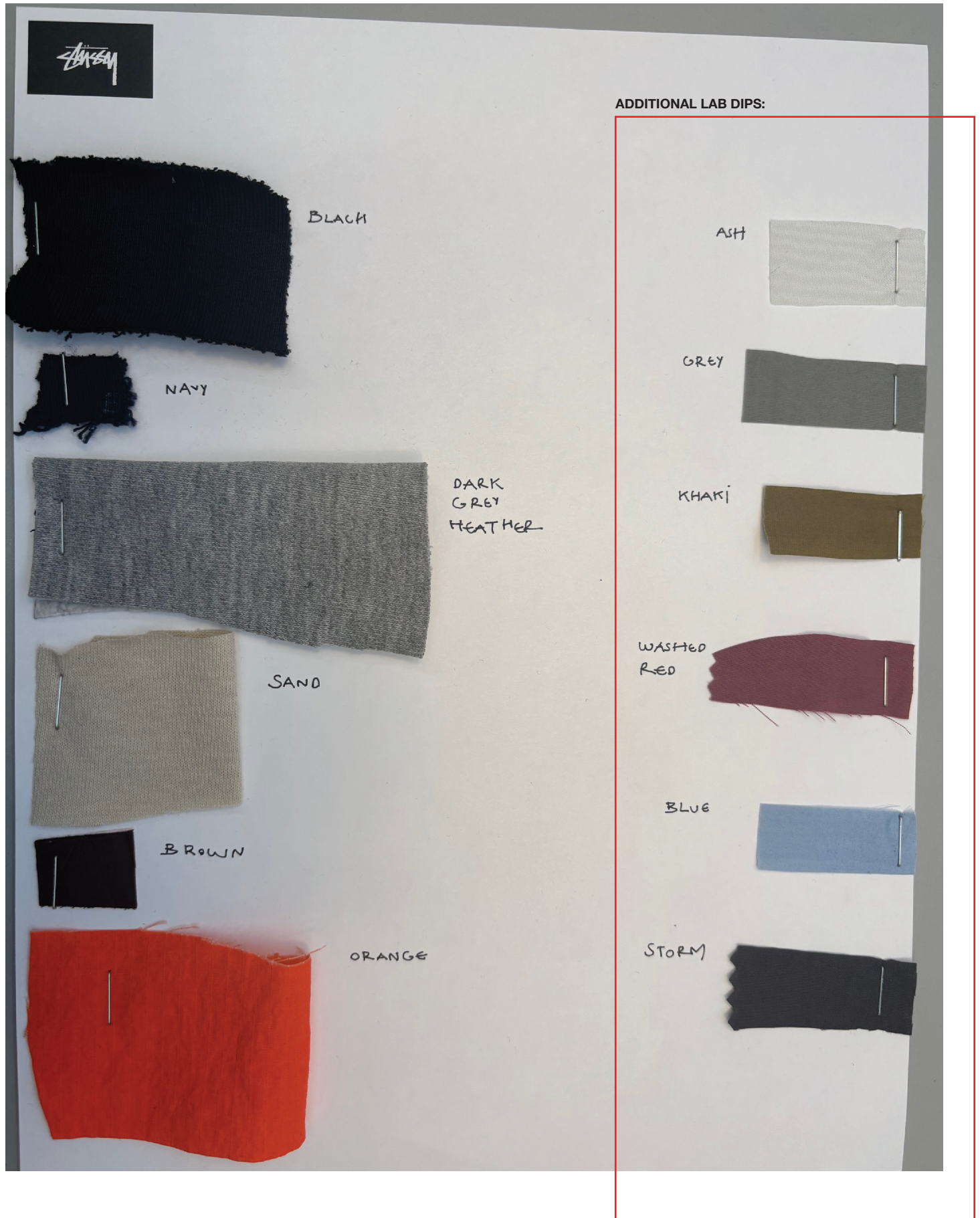
****VENDOR RESPONSIBLE FOR ORDERING AND PAYMENT TO ZABIN FOR ALL TRIMS ON THIS PAGE****

| ZABIN # | NAME | IMAGE | PLACEMENT | QTY |
|---------|--|---|---|-----|
| ZWVNL06 | MED STOCK STRIP |  | SEWN INSIDE CENTER BACK NECK 1/2" DOWN FROM NECK SEAM | 1 |
| ZWVNL20 | SIZE + COO LOOP LABEL MADE IN VIETNAM |  | CENTERED & SEWN INTO BOTTOM OF ORIGINAL LARGE STOCK LABEL | 1 |
| ZDNA01 | MINI AUTHENTIC DNA LABEL |  | SEWN INTO WEARER'S INTERIOR LEFT SIDE SEAM | 1 |
| SMST | UPC BARCODE STICKER (HANGTAG) |  | PLACE ON BACK OF HANGTAG | 1 |
| SMST | UPC BARCODE STICKER (POLY BAG) |  | PLACE ON THE OUTSIDE, FRONT LOWER RIGHT CORNER OF POLY BAG | 1 |
| ZHGT08 | STOCK HANGTAG WITH STRING |  | LOOP STRING THROUGH COO LABEL AT CENTER BACK NECK | 1 |
| ZWVNL08 | BIG STOCK FLAGLABEL - NATURAL |  | SEWN IN POCKET SEAM LEFT SIDE OF THE WEARER NATURAL ON ALL COLORS | 1 |
| ZWVNL78 | STUSSY SWEATS LABEL |  | SEWN AT INTERIOR WAISTBAND | 1 |



STYLE # 116753 FLEECE PANT

ADDITIONAL LAB DIPS:





AVERY DENISON CARE & CONTENT LABELS

ALL CARE AND CONTENT LABELS WILL BE ORDERED FROM AVERY DENISON.
ONLY THE ENGLISH NEEDS TO BE FILLED IN ON FORM.
AVERY DENISON WILL PROVIDE ALL OTHER LANGUAGES.

SEND COMPLETED ORDER FORM TO:

Selina Wang <selina.wang1@ap.averydennison.com>

Phone +86 20 32335525

CB681418A - STS UNIVERSAL CL GARMENT - EJ

ENGLISH

LABEL #1

JAPANESE

FRONT

28mm

68mm

M

100% COTTON
LINING 1
65% POLYESTER
35% COTTON
LINING 2
100% POLYESTER
FILLING
100% POLYESTER
MADE IN TURKEY

CA# 28629
RN# 94974

HAVE A
GOOD VIBE!!

PO# 000000
STYLE# 000000

BACK

28mm

68mm

100% コットン
裏地 1
65% ポリエステル
35% コットン
裏地 2
100% ポリエステル
詰め物
100% ポリエステル
トルコ製

(株)ジャック
0548・22・7366

CB686688A - STS UNIVERSAL CL GARMENT - FC

FRENCH

LABEL #2

CHINESE

FRONT

28mm

68mm

100% COTON
DOUBLURE 1
65% POLYESTER
35% COTON
DOUBLURE 2
100% POLYESTER
REMBOURRAGE
100% POLYESTER
FABRIQUÉ EN
TURQUIE

STUSSY, INC
44 RUE DU TEMPLE
75004 PARIS, FRANCE

BACK

28mm

68mm

M 175/92A

面料:100%棉
里料1:65%聚酯纤维
35%棉
里料2:100%聚酯纤维
填充物:100%聚酯纤维
产地:土耳其

NOTE: THESE ARE EXAMPLES OF LABELS AND NOT FINAL ART
BOTH LABELS MUST BE SEWN IN PRODUCT