



#115878 PULLOVER JACKET

## HISTORY

- 1.20.26 - ADDED ISO STITCH CALLOUTS

THE NOVELTY AND SPECIAL FINISHES SHALL MEET OR EXCEED 5 HOME LAUNDERINGS WITHOUT LOSING THE INTENDED DESIGN AESTHETIC.



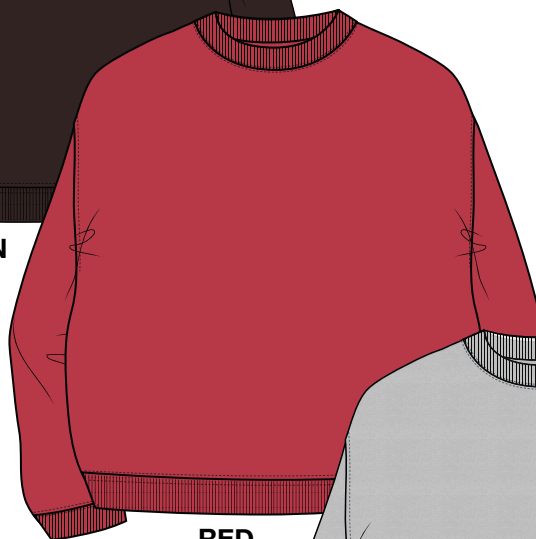
**BLACK**



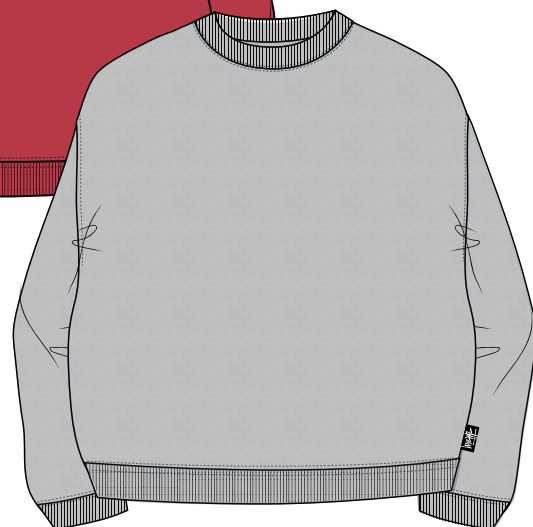
**MIDNIGHT**



**BROWN**



**RED**



**DARK GREY HEATHER**



STYLE #118632 SWEATS CREW

**SEASON : FALL 2026**

STYLE NO.	#118632	VENDOR	UNAVAILABLE
STYLE NAME	SWEATS CREW	CATEGORY	FLEECE
DESIGNER	NOEMIE AL HOMSI	SIZE RUN	S, M, L, XL, XXL

## FIT/STYLE REFERENCE

SEASON	STYLE NO.	STYLE NAME	REFERENCE DETAIL
SP25	118607	FLEECE CREW	BASIC BODY SPEC

**FABRIC(S)**

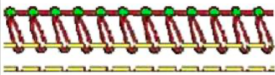



FABRIC / SHELL	100% Cotton Fleece 530gsm (C2303125/C2300708)	EMBELLISHMENT	FLAG + STUSSY SWEATS LABEL
	98% COTTON 2% SPANDEX 510gsm (C2506671 rib)	DYE/WASH	PC DYE + GARMENT WASH
THREAD SIZE	T40	SPI	10~12 SPI

## COLORWAY FABRIC AND TRIMS CHART

[illegible]



## ISO STITCH TERMINOLOGY

Stitch TOP view as sewn	Stitch BOTTOM view as sewn	ISO 4915 Number	COMMON Application	COMMON Requirements	COMMON Stitch Description
<b>5 Thread Safetystitch</b> 	<b>5 Thread Safetystitch Back view</b> 	<b>516</b> <b>(401+504)</b>	Safety Stitch Seaming Wovens & Knits	Specify : 1) Stitches per inch (SPI). 2) Needle spacing and Bite (Example: 1/8" - 1/8", 3/16" - 3/16", 3/16" - 1/4")	Combination stitch consisting of a single-needle chainstitch (401) and a 3-thread Overedge stitch (504) that are formed simultaneously.
<b>3 Thread Overedge</b> 	<b>Common Overedge/ Overlock Stitch</b> 	<b>504</b>	Single Needle Overedge Seaming	Specify : 1) Stitches per inch (SPI). 2) Width Bite (Example: 1/8", 3/16", 1/4")	Stitch is formed with 1-needle thread and 2-looper threads with the looper threads forming a purl on the edge of the seam. For overedge seaming and serging.





STYLE #118632 SWEATS CREW

DETAILS

5-THREAD SAFETY STITCH AT ALL JOINING SEAMS (ISO 516)



STUSSY SWEATS LABEL  
SEWN **INSIDE**

1" 1X1 COTTON RIB  
STRADDLE STITCH  
W/ INTERIOR OVERLOCK

NECK BINDING

CROSSGRAIN - FRONT & BACK

(SLEEVES - NORMAL GRAIN)

STRADDLE STITCH W/  
INTERIOR OVERLOCK  
(ISO 516)

OVERLOCK OUTSEAM  
(ISO 504)

STRADDLE STITCH W/  
INTERIOR OVERLOCK  
(ISO 516)

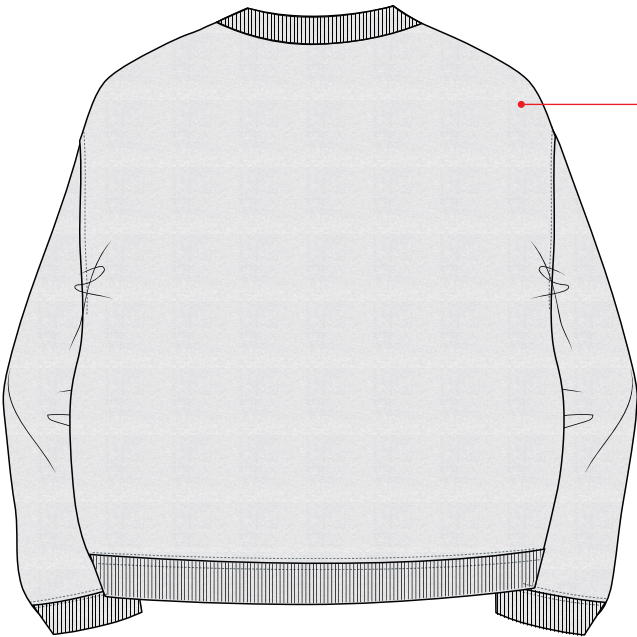
3" HEM & CUFFS  
1X1 COTTON RIB

STUSSY FLAG SEWN IN SIDE SEAM  
3/4" ABOVE RIB SEAM



WHEN SEWN, PLEASE  
SEW 1/8" over  
THE 'Y'






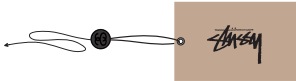
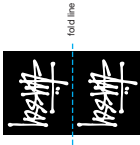
SET IN SLEEVE CONSTRUCTION





## STYLE #118632 SWEATS CREW

**\*\*VENDOR RESPONSIBLE FOR ORDERING AND PAYMENT TO ZABIN FOR ALL TRIMS ON THIS PAGE\*\***

ZABIN #	NAME	IMAGE	PLACEMENT	QTY
ZWVNL78	STUSSY SWEATS LABEL - BLACK		SEWN INSIDE CENTER BACK NECK 1/2" DOWN FROM NECK SEAM	1
ZWVNL20	SIZE + COO LOOP LABEL MADE IN VIETNAM		CENTERED & SEWN INTO BOTTOM OF STUSSY SWEATS LABEL	1
ZDNA01	MINI AUTHENTIC DNA LABEL		SEWN INTO WEARER'S INTERIOR LEFT SIDE SEAM	1
SMST	UPC BARCODE STICKER (HANGTAG)		PLACE ON BACK OF HANGTAG	1
SMST	UPC BARCODE STICKER (POLY BAG)		PLACE ON THE OUTSIDE, FRONT LOWER RIGHT CORNER OF POLY BAG	1
ZHGT08	STOCK HANGTAG WITH STRING		LOOP STRING THROUGH COO LABEL AT CENTER BACK NECK	1
ZWVNL83	BIG BASIC FLAG LABEL - BLACK		SEWN SIDE SEAM LEFT SIDE OF THE WEARER	1



## TRIMCO GROUP

- Font used is Arial unicode MS regular  
5,5pt unless stated otherwise  
- All fields are variable unless stated otherwise

### 1. Printed languages on CARE LABEL:

#### COO + PART&CONTENT

6 Languages (same translations do not repeat):

English  
Simplified Chinese  
Spanish  
French  
Japanese  
Korean

### 2. languages in QR:

#### COO + PART&CONTENT + CARE

12 Languages:  
English  
Simplified Chinese  
Traditional Chinese  
Danish  
German  
Spanish  
French  
Italian  
Japanese  
Korean  
Dutch  
Portuguese

Triman 26mm **FIXED**

LOGO (Fixed)

SIZE English (arial bold)  
SIZE French | SIZE Spanish  
SIZE Chinese

QR (style level + care + wash icon text + agec)

STYLE number  
Season

COO

PART&CONTENT

30mm

143mm

KC logo  
(Fixed)

PART&CONTENT

EOD (EN/FR/CH) (Fixed)

ISO icons 13pt

ASTM icons 13pt

KOREAN icons 13pt

Utah sterilization permit number (OPTIONAL)

Email address (Fixed)  
CA I RN (Fixed)

Brand address EU (Fixed)

Brand address UK (Fixed)

Japanese importer (Fixed)

Korean importer (Fixed)

LABE LON  
A-T E X  
CLO T E X

TRIMCO GROUP		Brand Owner:	Stüssy
		Brand:	Stüssy
Customer Ref:	STUSSY-CNC-MAIN-AW	Trimco Item No:	STUSSY-CNC-MAIN
Description:	Stüssy – main garment label – WHITE - 30mm		
Size:	30X143MM	Created By:	Sherman / Jack
Colours:	 DIECUT	Date:	2025-07-21
	 BLACK	Approve By/ Date:	

2025.07.21  
amend addresses to be smaller

2025.06.23  
removed japanese size