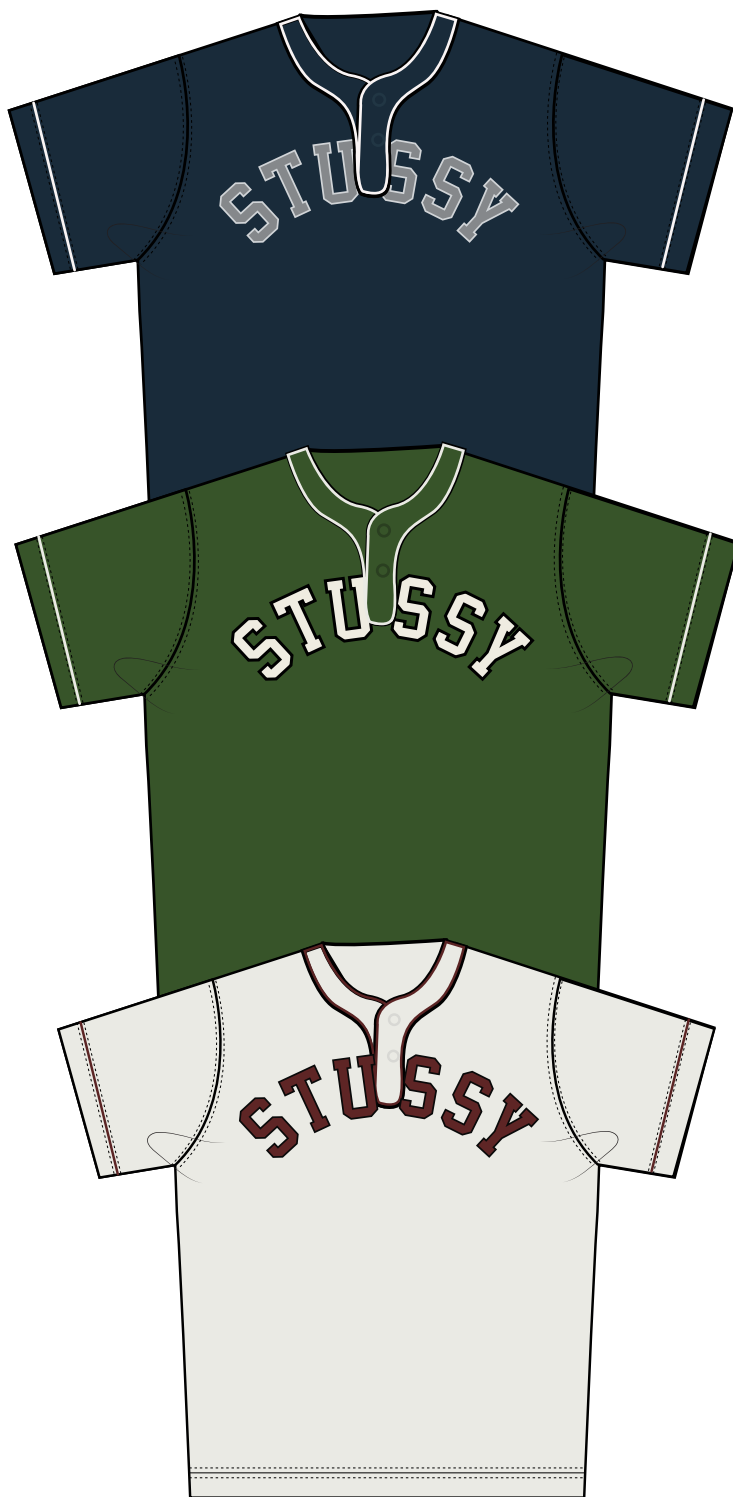




STYLE #1140383 ARCH BASEBALL JERSEY





STYLE #1140383 ARCH BASEBALL JERSEY

SEASON : SPRING 26

STYLE NO.	1140383	VENDOR	UNAVAILABLE
STYLE NAME	ARCH BASEBALL JERSEY	CATEGORY	JERSEY
DESIGNER	TY	SIZE RUN	S, M, L, XL, XXL

FIT/STYLE REFERENCE

SEASON	STYLE NO.	STYLE NAME	REFERENCE DETAIL
SP25	1140365	HEAVY JERSEY CREW	BODY SPEC, DETAILS AS SKETCH

FABRIC(S)

FABRIC / SHELL	100% COTTON HEAVY JERSEY 320GSM (AS SP25 #1140365)	APPLICATION	SCREEN PRINT OR WATER BASED PRINT (FRONT)
		WASH	LIGHT PP SPRAY W/ GARMENT WASH (SAME AS SU25 #118574)

COLORWAY FABRIC AND TRIMS CHART

	COLORWAY 1	COLORWAY 2	COLORWAY 3	COLORWAY 4	COLORWAY 5
COLORWAY		NAVY	GREEN	NATURAL	
GROUND COLOR		19-3920 TCX	18-0135 TCX	12-4301 TCX	
THREAD COLOR		DTM	DTM	DTM	
PIPING		11-4302 TCX	11-4302 TCX	19-1531 TCX	
PRINT COLOR (OUTLINE)		OFF WHITE (11-4302 TCX)	BLACK	BLACK	
PRINT COLOR (FILLED)		15-4304 TCX	OFF WHITE (11-4302 TCX)	19-1531 TCX	
BUTTON		19-3920 TCX	18-0135 TCX	12-4301 TCX	

BUTTON STYLE
14MM

MATTE DTM



STYLESTYLE #1140383 ARCH BASEBALL JERSEY

WITH 1/4" JERSEY BINDING INSIDE BACK NECK
FOR CLEAN FINISH

SPLIT STITCH AT SLEEVE HEM
(DTM-MATCH TO SIDE STITCHES
MATCH TO BODY/ SLEEVES FOR BODY/ SLEEVES SIDE STITCHES)

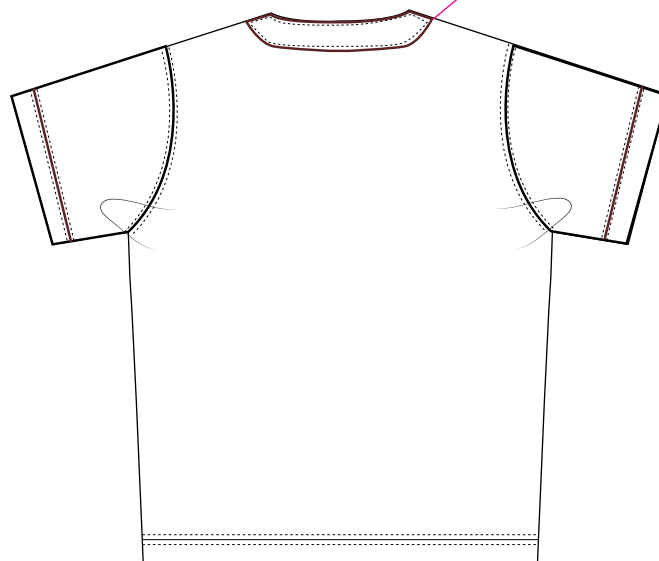
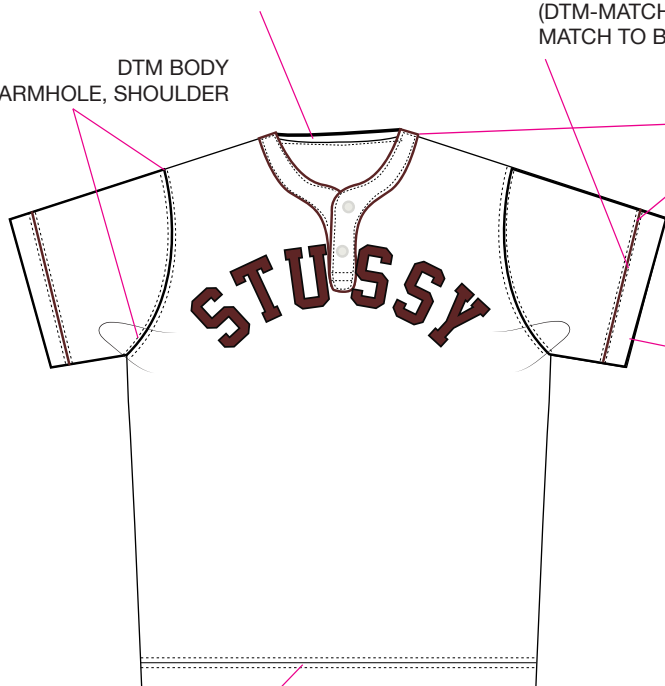
DTM BODY
SPLIT STITCH AT ARMHOLE, SHOULDER

1/8" ROUND COTTON JERSEY
PIPING

7/8" HEM
AT SLEEVE OPENING

1" BODY HEM STITCH
DOUBLE NEEDLE TOP STITCH






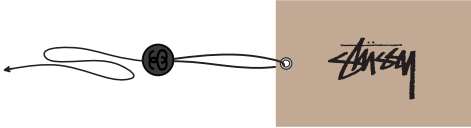
1/8" ROUND COTTON JERSEY
PIPING





STYLESTYLE #1140383 ARCH BASEBALL JERSEY

****VENDOR RESPONSIBLE FOR ORDERING AND PAYMENT TO ZABIN FOR ALL TRIMS ON THIS PAGE****

ZABIN #	NAME	IMAGE	PLACEMENT	QUANTITY
ZWVNL21	STOCK LOOP LABEL BLACK		SEWN INSIDE CENTER BACK NECK UNDER JERSEY BINDING	1
ZWVNL20	SIZE + COO LOOP LABEL MADE IN VIETNAM		SEWN NEXT TO ORIGINAL STOCK LOOP LABEL	1
ZDNA01	MINI AUTHENTIC LABEL		TOPS/JACKETS: SEWN INTO WEARER'S INTERIOR LEFT SIDE SEAM	1
SMST	UPC BARCODE STICKER (HANGTAG)		PLACE ON BACK OF HANGTAG	1
SMST	UPC BARCODE STICKER (POLY BAG)		PLACE ON THE OUTSIDE, FRONT LOWER RIGHT CORNER OF POLY BAG	1
ZHGT08	STOCK LARGE HANGTAG WITH STRING		LOOP STRING THROUGH COO LABEL AT CENTER BACK NECK	1



AVERY DENISON CARE & CONTENT LABELS

ALL CARE AND CONTENT LABELS WILL BE ORDERED FROM AVERY DENISON.
ONLY THE ENGLISH NEEDS TO BE FILLED IN ON FORM.
AVERY DENISON WILL PROVIDE ALL OTHER LANGUAGES.
SEND COMPLETED ORDER FORM TO:
Selina Wang <selina.wang1@ap.averydennison.com>
Phone +86 20 32335525

CB681418A - STS UNIVERSAL CL GARMENT - EJ

ENGLISH

LABEL #1

JAPANESE

FRONT

BACK

28mm

28mm

68mm

— .

✂

M

100% COTTON
LINING 1
65% POLYESTER
35% COTTON
LINING 2
100% POLYESTER
FILLING
100% POLYESTER
MADE IN TURKEY

☞ ☞ ☞ ☞ ☞

CA# 28629
RN# 94974

HAVE A
GOOD VIBE!!

PO# 000000
STYLE# 000000

68mm

100% コットン
裏地 1
65% ポリエステル
35% コットン
裏地 2
100% ポリエステル
詰め物
100% ポリエステル
トルコ製

☞ ☞ ☞ ☞ ☞

(株)ジャック
0548-22-7366

✂

CB686688A - STS UNIVERSAL CL GARMENT - FC

FRENCH

LABEL #2

CHINESE

FRONT

BACK

28mm

28mm

68mm

— .

✂

100% COTON
DOUBLURE 1
65% POLYESTER
35% COTON
DOUBLURE 2
100% POLYESTER
REMBOURRAGE
100% POLYESTER
FABRIQUÉ EN
TURQUIE

☞ ☞ ☞ ☞ ☞

STUSSY, INC
44 RUE DU TEMPLE
75004 PARIS, FRANCE

68mm

M 175/92A

面料:100%棉
里料1:65%聚酯纤维
35%棉
里料2:100%聚酯纤维
填充物:100%聚酯纤维
产地:土耳其

☞ ☞ ☞ ☞ ☞

✂

NOTE: THESE ARE EXAMPLES OF LABELS AND NOT FINAL ART
BOTH LABELS MUST BE SEWN IN PRODUCT



TWO COLOR SCREENPRINT
ARTWORK 100% TO SCALE
15"W x 5.1"H
7.5" FROM HPS

STUSSY



STYLESTYLE #1140383 ARCH BASEBALL JERSEY

REFERENCE FOR COLLAR & BINDING CONSTRUCTION

