



BLACK



LIGHT BLUE



BONE



STYLE #1118619 PLAID LINED ZIP HOOD

SEASON : SUMMER 26

STYLE NO.	118169	VENDOR	UNAVAILABLE
STYLE NAME	PLAID LINED ZIP HOOD	CATEGORY	FASHION FLEECE
DESIGNER	TY	SIZE RUN	S, M, L, XL, XXL

FIT/STYLE REFERENCE

SEASON	STYLE NO.	STYLE NAME	REFERENCE DETAIL
SP26	118600	BASIC GEAR THERMAL ZIP HOOD	BASIC BODY SPEC, DETAILS AS SKETCH

FABRIC(S)

FABRIC / SHELL	66% DRY COTTON 34% POLY 360gsm (REF: U28HD0015)	EMBELLISHMENT	DIRECT EMBROIDERY
FABRIC #2, #3	100% COTTON YARN DYE PLAID (QUALITY AS SWATCH SENT) 97% DRY COTTON 3% SPANDEX 490gsm (RIB)	WASH	PC DYE, GARMENT WASH
THREAD SIZE	TEXT 30 (SPUN COTTON)	SPI	10~12 SPI


COLORWAY FABRIC AND TRIMS CHART

	COLORWAY 1	COLORWAY 2	COLORWAY 3			
COLORWAY	BLACK	BONE	LIGHT BLUE			
FABRIC	19-4008 TCX	11-0104 TCX	15-4005 TCX			
THREAD COLOR	DTM	DTM	DTM			
RIB COLOR	DTM	DTM	DTM			
DRAWCORD	DTM	DTM	DTM			
ZIPPER TEETH + PULL	DTM	DTM	DTM			
ZIPPER TAPE	YKK 580	YKK122	YKK 545			
EMBROIDERY	19-4008 TCX	11-0104 TCX	15-4005 TCX			



DRAWCORD

ZIPPER NOMENCLATURE

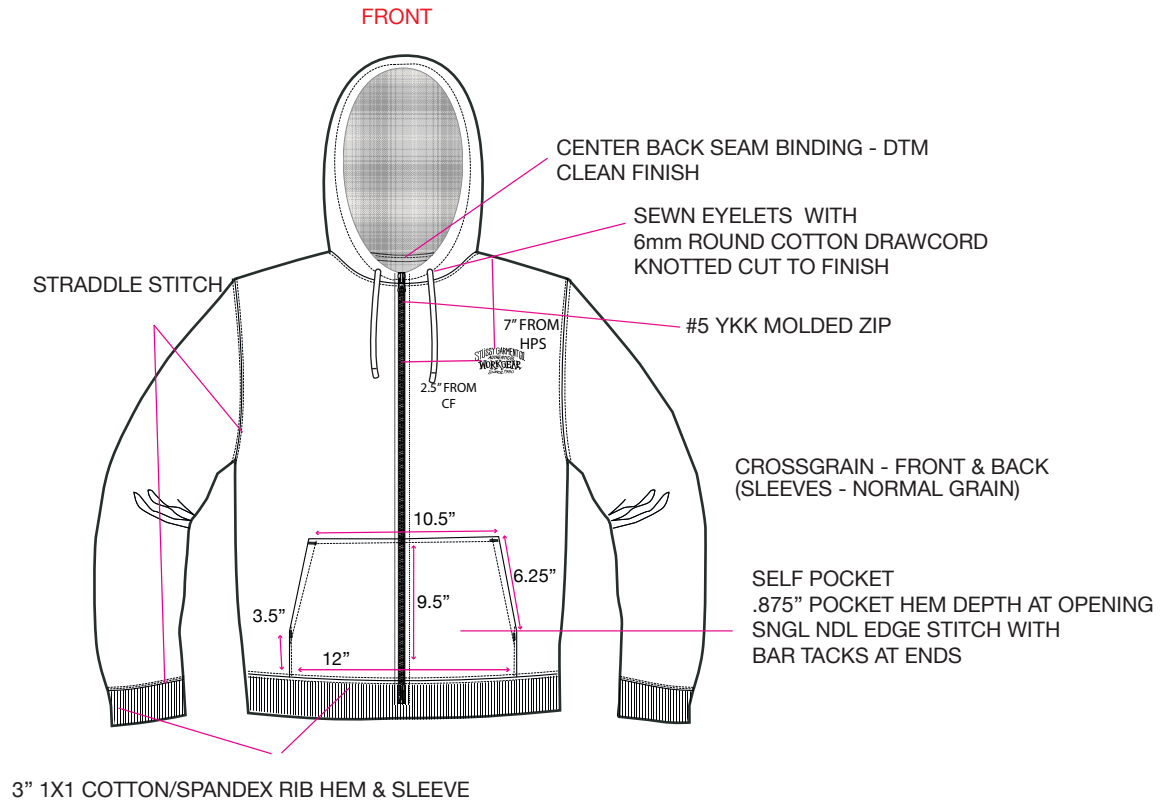
BASE MATERIAL	CHAIN TYPE	GAUGE/SIZE	SLIDER BODY TYPE	SLIDER FUNCTION	SLIDER PULLTAB	FINISH	LOCATION	QTY
YKK VISLON	VISLON	#5	(M) OPEN (1-WAY)	(A) AUTO-LOCK	DA8LH 	DTM	CF	1

*ALL OPEN-END SLIDERS/PULLS ON WEARER'S RIGHT SIDE

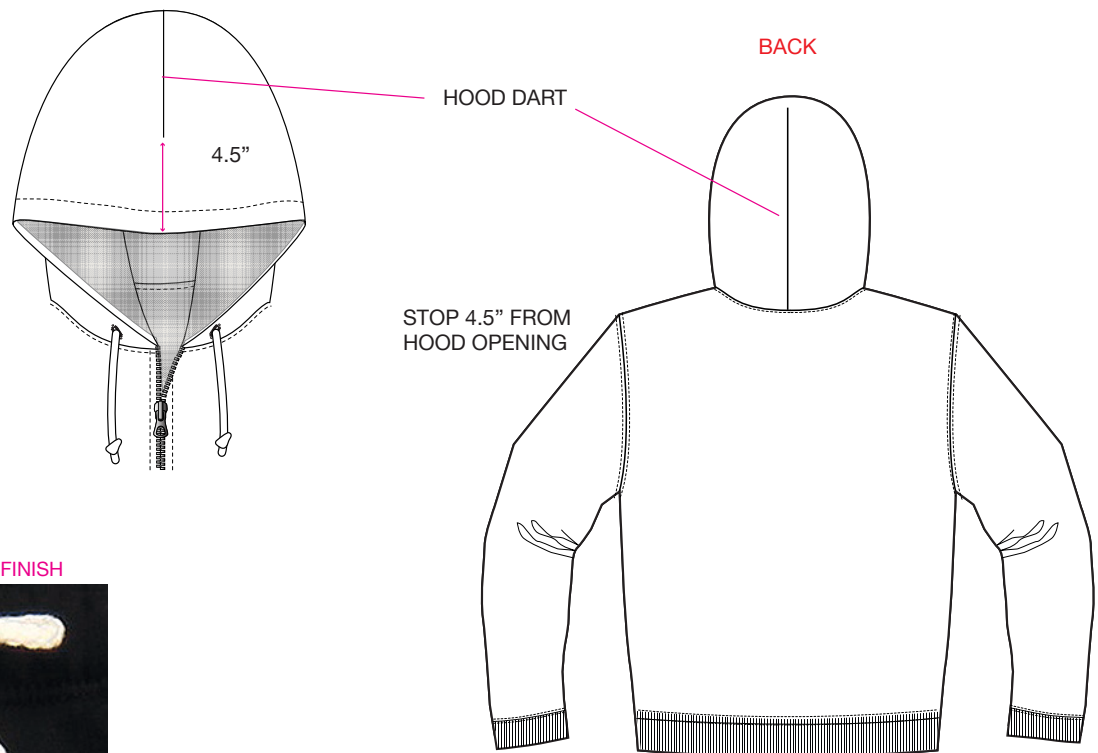


STYLE #1118619 PLAID LINED ZIP HOOD

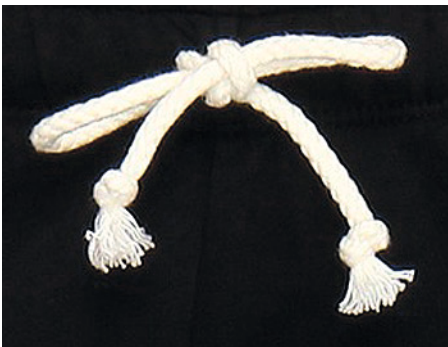
DETAILS



2 PIECE HOOD



DRAWCORD CONSTRUCTION:
ROUNDED D/C - KNOTTED CUT TO FINISH





STYLE #1118619 PLAID LINED ZIP HOOD



ARTWORK 100% TO SCALE
DIRECT EMBROIDERY
2.5"W x 1.34"H
AT WEARS LEFT CHEST

SEW THE TWO FABRICS AS ONE LAYER






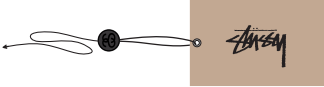


COVERSTITCH ALL SEAMS
AND BIND SEAM ALLOWANCES



STYLE #1118619 PLAID LINED ZIP HOOD

****VENDOR RESPONSIBLE FOR ORDERING AND PAYMENT TO ZABIN FOR ALL TRIMS ON THIS PAGE****

ZABIN #	NAME	IMAGE	PLACEMENT	QTY
ZWVNL06	MED STOCK STRIP		SEWN INSIDE CENTER BACK NECK 1/2" DOWN FROM NECK SEAM	1
ZWVNL20	SIZE + COO LOOP LABEL MADE IN VIETNAM		CENTERED & SEWN INTO BOTTOM OF ORIGINAL LARGE STOCK LABEL	1
ZDNA01	MINI AUTHENTIC DNA LABEL		SEWN INTO WEARER'S INTERIOR LEFT SIDE SEAM	1
SMST	UPC BARCODE STICKER (HANGTAG)		PLACE ON BACK OF HANGTAG	1
SMST	UPC BARCODE STICKER (POLY BAG)		PLACE ON THE OUTSIDE, FRONT LOWER RIGHT CORNER OF POLY BAG	1
ZHGT08	STOCK HANGTAG WITH STRING		LOOP STRING THROUGH COO LABEL AT CENTER BACK NECK	1



AVERY DENISON CARE & CONTENT LABELS

ALL CARE AND CONTENT LABELS WILL BE ORDERED FROM AVERY DENISON.
ONLY THE ENGLISH NEEDS TO BE FILLED IN ON FORM.
AVERY DENISON WILL PROVIDE ALL OTHER LANGUAGES.
SEND COMPLETED ORDER FORM TO:
Selina Wang <selina.wang1@ap.averydennison.com>
Phone +86 20 32335525

CB681418A - STS UNIVERSAL CL GARMENT - EJ

ENGLISH

LABEL #1

JAPANESE

FRONT

BACK

28mm

28mm

68mm

M

100% COTTON
LINING 1
65% POLYESTER
35% COTTON
LINING 2
100% POLYESTER
FILLING
100% POLYESTER
MADE IN TURKEY

CA# 28629
RN# 94974

HAVE A
GOOD VIBE!!

PO# 000000
STYLE# 000000

68mm

100% コットン
裏地 1
65% ポリエステル
35% コットン
裏地 2
100% ポリエステル
詰め物
100% ポリエステル
トルコ製

(株)ジャック
0548-22-7366

CB686688A - STS UNIVERSAL CL GARMENT - FC

FRENCH

LABEL #2

CHINESE

FRONT

BACK

28mm

28mm

68mm

100% COTON
DOUBLURE 1
65% POLYESTER
35% COTON
DOUBLURE 2
100% POLYESTER
REMBOURRAGE
100% POLYESTER
FABRIQUÉ EN
TURQUIE

STUSSY, INC
44 RUE DU TEMPLE
75004 PARIS, FRANCE

68mm

M 175/92A

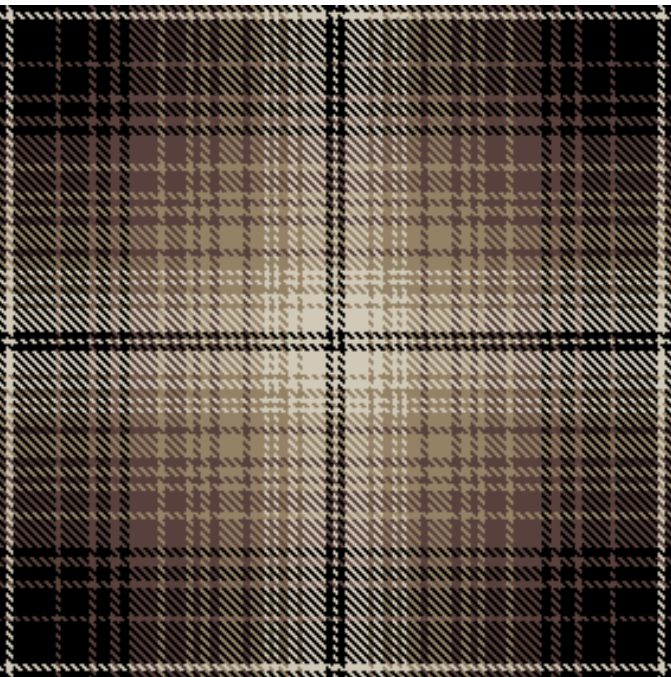
面料:100%棉
里料1:65%聚酯纤维
35%棉
里料2:100%聚酯纤维
填充物:100%聚酯纤维
产地:土耳其

NOTE: THESE ARE EXAMPLES OF LABELS AND NOT FINAL ART
BOTH LABELS MUST BE SEWN IN PRODUCT



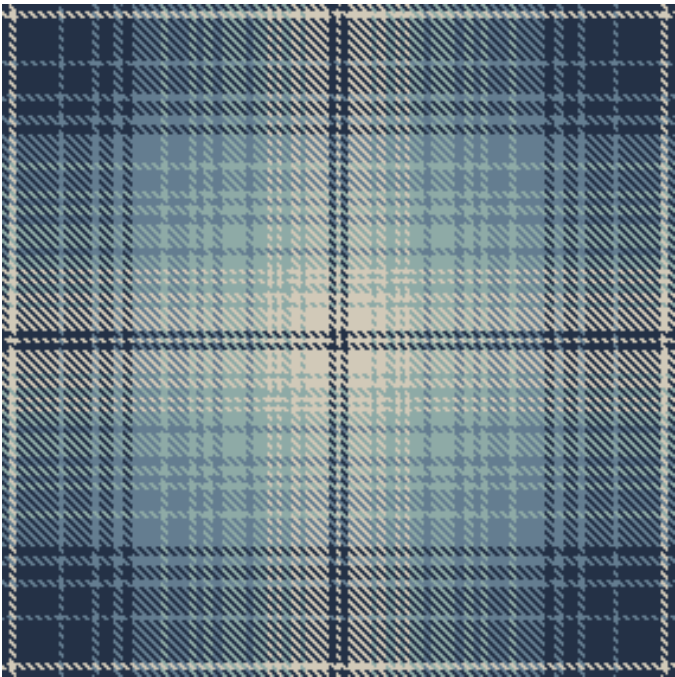
PLAID ARTWORK (100% ACTUAL SCALE)
3.5"W X 3.5"H REPEAT PATTERN

UMBER



- 14-6305 TPX
- BLACK
- 19-1234 TPX
- 17-1109 TPX

LIGHT BLUE



- 13-4403 TPX
- 19-4017 TPX
- 18-4221 TPX
- 15-4706 TPX

BONE



- 13-4403 TPX
- 17-1664 TCX
- 17-1661 TCX
- 14-0615 TCX




PLAID QUALITY

Client STUSSY

Season FA25 – Fabric proposals based on moodboard

Swatch Approval



Article MC00-5531-001

Composition 100% COTTON

Weight 168 GSM

Width 148-150 CM

ROVO

Rua D. Manuel II, n.º 290
9.º Piso, 4050-344 Porto (PT)
Hornstr. 16, 10963 Berlin (DE)

rovo-agency.de