

TTT

RANGE: BOTTOMS

SEASON: SPRING SUMMER 2026

STYLENAME:  
TTT SWIM SHORTS

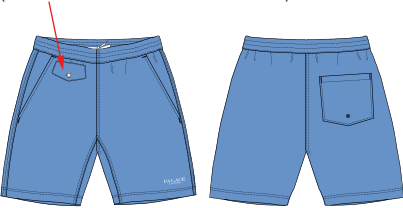
COLOURWAY:  
BLACK/WHITE

SKU CODE:  
TTT15SS001

MAIN FABRIC REF:  
270T NYLON TASLAN CRINKLE

LINING FABRIC REF:  
POLY MESH INNER PANT

LEAD SAMPLE:  
POCKET SWIM SHORT SS23 (P24ST031)  
(REMOVE SMALL FRONT POCKET)

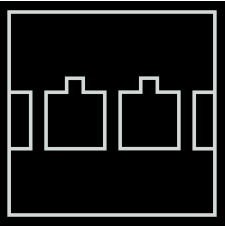


WAIST CORD: POLY/DTM



AGLET: CLEAR PLASTIC

BRANDING: TRILOGY TAPES LABEL  
POSITION: BACK POCKET  
TYPE: WOVEN FLAT  
COLOUR: BLACK WITH WHITE TEXT  
FINISHED SIZE: H 30 MM X W 30 MM  
LABEL: SUPPLIED BY TTT



DETAIL:  
COTTON MATTE EYELET  
FOR DRAINAGE



FABRIC QUAL/COL:  
270T NYLON TASLAN CRINKLE



LINING FABRIC QUAL/COL:  
MESH

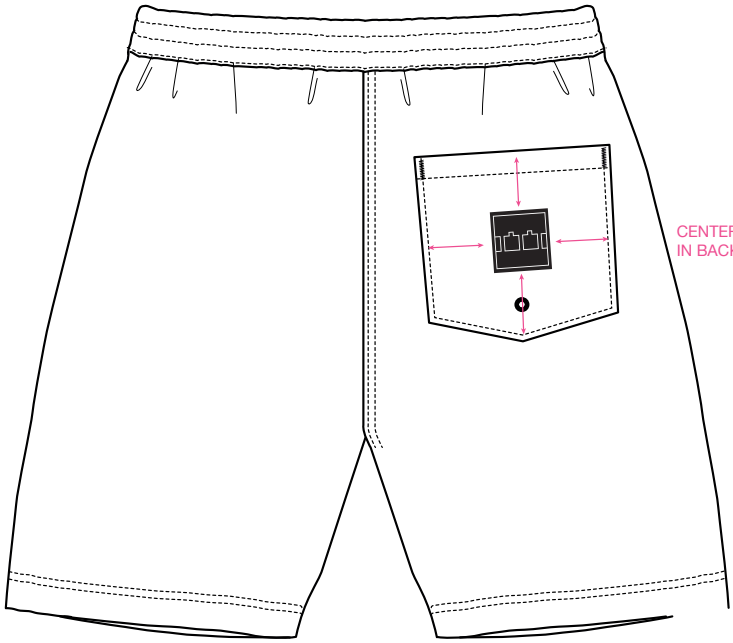
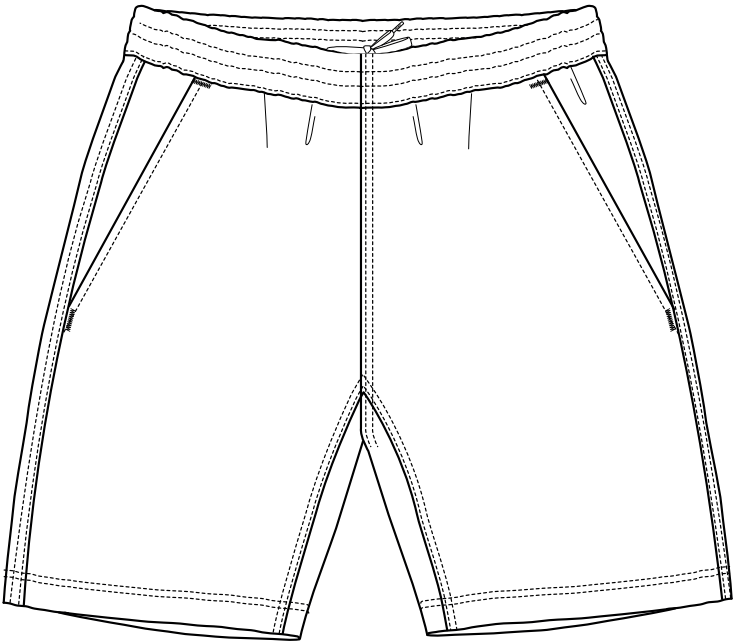


TOP STITCHING COL:  
TONAL



TO MATCH FABRIC

## BRANDING POSITIONS



CENTER LABEL  
IN BACK POCKET

TTT

RANGE: BOTTOMS

SEASON: SPRING SUMMER 2026

STYLENAME:  
TTT SWIM SHORTS

COLOURWAY:  
BLACK/WHITE

SKU CODE:  
TTT15SS001

## ARTWORK/BRANDING DETAIL:

BRANDING:

### BACK POCKET

TYPE:

WOVEN LABEL (SUPPLIED BY US)

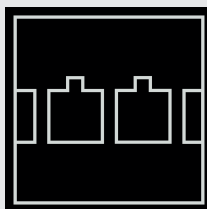
COLOUR REFERENCE:



**BRIGHT WHITE**  
**11-0601TPX**



**JET BLACK**  
**19-0303 TPX**



SIZE:

**30MM W X 30MM H**

SIZED ARTWORK FILES:

TTT

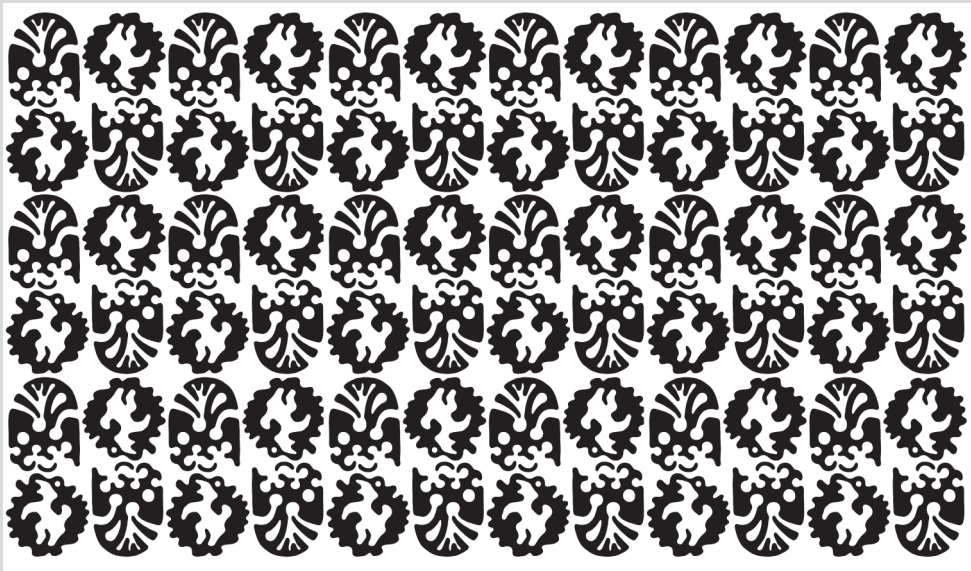
RANGE: BOTTOMS

STYLENAME:  
TTT SWIM SHORTS

SEASON: SPRING SUMMER 2026

COLOURWAY:  
BLACK/WHITE

SKU CODE:  
TTT15SS001



ALL OVER PRINT:  
1629MM W X 955MM H

COLOUR REFERENCE:

PANTONE:  
WHITE C

PANTONE:  
BLACK C

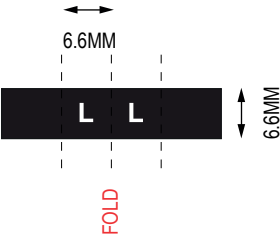
SIZED ARTWORK FILES:  
TTT\_SWIMSHORTS\_ARTWORK.psd

BRANDING DETAILS:  
LABELS & PACKAGING

INTERNAL LABEL ART HERE:  
TYPE: WOVEN LABEL (BLACK/WHITE)  
SIZE: H 25MM X W 40MM



INTERNAL LABEL ART HERE:  
TYPE: WOVEN LABEL (WHITE/BLACK)  
FOLDED EXPOSED SIZE: H 6.6MM X W 6.6MM



- S
- M
- L
- XL
- XXL