






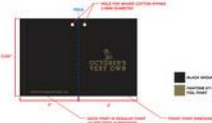



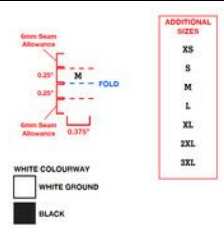




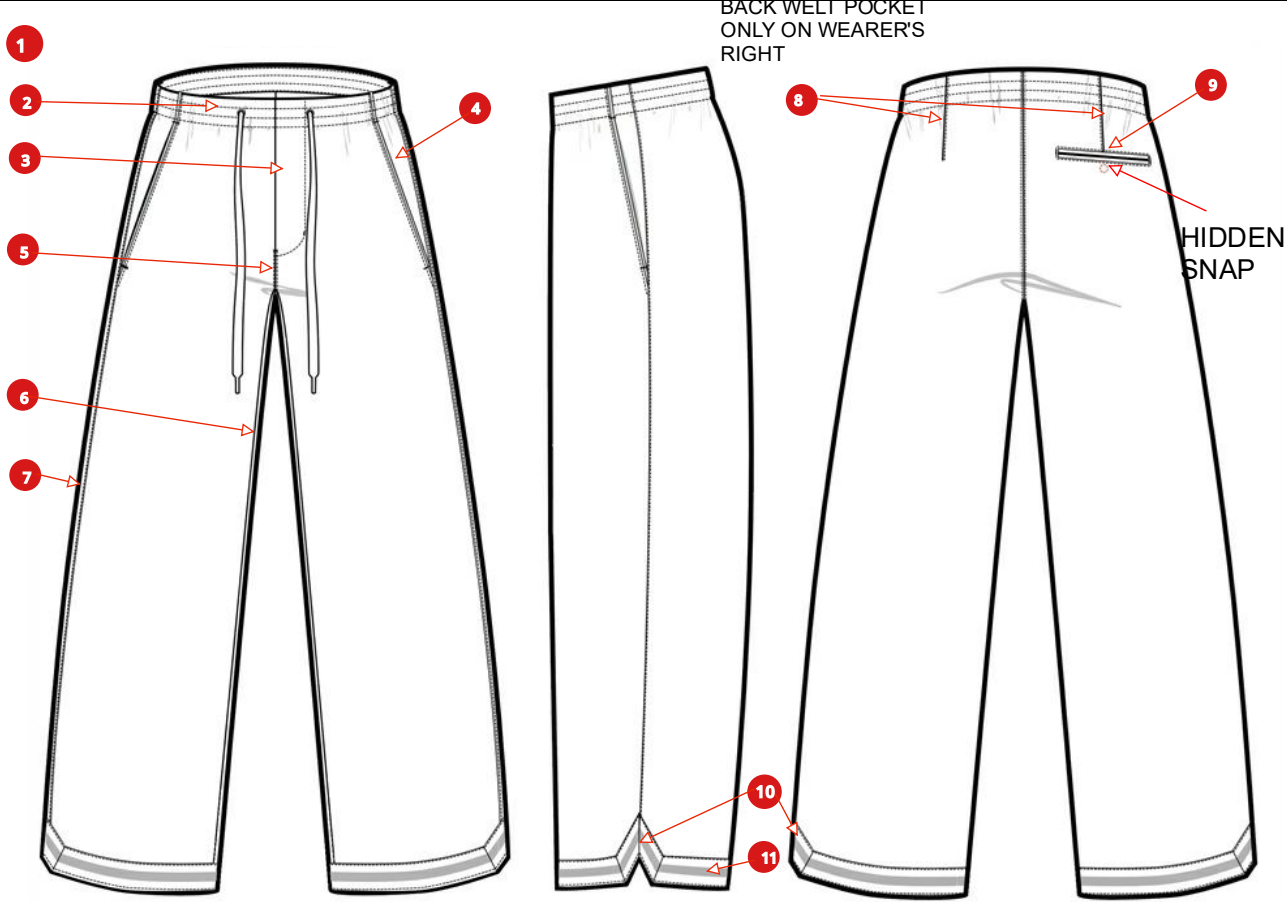
Article Summary					Version 1		
Article Code	M-0226-KB-6876		Material	MESH - 100% POLYESTER, 230GSM-MA-061 (FB-K692)	Product Group	BOTTOM	
Article Name	MENS MESH TROUSER				Product Sub-Category	PANT - ACTIVE	
Created On	05-20-2025 10:45:00 AM				Season	Q2 2026	
Last Modified	11-17-2025 3:49:00 PM				Life Cycle Stage	Sample Evaluation	
Gender Classification		Mens	Sub Class D	Pull on Pant	Fabrication	KNIT BOTTOM	
Supplier		UN-AVAILABLE CO. LTD	Release Date	01 May 2026	Ex-Factory	03 Feb 2026	
							COLORS
							<div><div></div>BLACK (BK) BLACK</div> <div><div></div>FEATHER GREY (FE) 15-1305 TCX SANDSTONE</div>
SIZES							
000, 001, 002, 003, 004, 005, 006, 007							

Bill of Materials - #1											Version 1
	Article Code	M-0226-KB-6876					Product Group	BOTTOM			
	Article Name	MENS MESH TROUSER					Product Sub-Category	PANT - ACTIVE			
	Created On	05-20-2025 10:45:00 AM	Material	MESH - 100% POLYESTER, 230GSM-MA-061 (FB-K692)			Season	Q2 2026			
	Last Modified	11-17-2025 3:49:00 PM	Description				Life Cycle Stage	Sample Evaluation			
Part	Material		Placement		Consumption	UOM.	Comments	Supplier	Supplier Ref.	BK BLACK	FE FEATHER GREY
Fabric											
BODY	MESH - 100% POLYESTER, 230GSM-MA-061 (FB-K692) - Ver.#1		BODY, POCKETS BAGS		0	Meter				None	None
	DAZZLE TRICOT, 170GSM REF# HM231155 (FB-K1291) - Ver.#1		LINING, PIPING, BINDING		0	Meter			HM231155	None	None
Trims											
SEE PLACEMENT FOR DETAILS	CC LABEL - APPAREL (LT110) - Ver.#1 White Satin ground, Black text COO, Content, and Care Instructions may vary by style.				1	Each		Laven Industries Ltd.		None	None
SEE PLACEMENT FOR DETAILS	POLY BAG - GENERIC (PK101) - Ver.#1 Clear Plastic, with suffocation warning on back, UPC sticker placement on bottom right corner of bag.				1	Each		Vendor Sourced		None	None
SEE PLACEMENT FOR DETAILS	UPC STICKER- 1" X 2.5" (TR-ST114) - Ver.#1 PLEASE PRINT WITH THERMAL PRINTER				1	Each				None	None
WAISTBAND	ELASTIC PRESHRUNK (EC116) - Ver.#1 PLS REFER TO MEASUREMENT CHARTS FOR WIDTH SIZE		WB		1	Each				None	None
SEE PLACEMENT FOR DETAILS	OVO 2023 Booklet Hangtag (TR-HG142) - Ver.#1 Article code: HTOVO141A				1	Each		Reca Mainetti Asia Ltd	HTOVO141A	None	None
SEE PLACEMENT FOR DETAILS	TEAR-AWAY COO TAB: OVOF21_217_T (LT138) - Ver.#1 COUNTRY OF ORIGIN TAB		SINGLE STITCH- EASILY REMOVABLE		1	Each		Reca Mainetti Asia Ltd		None	None
SEE PLACEMENT FOR DETAILS	5mm GROSGRAIN RIBBON LOOP (TR-TV140) - Ver.#1 FOR HANGTAG ATTACHMENT		FOR HANGTAG ATTACHMENT		1	Each		Vendor Sourced		None	None
	OVO 2023 Main Loop Label (TR-LT252) - Ver.#1				1	Each		Reca Mainetti Asia Ltd	LBOVO147	None	None
	OVO 2023 Alpha Sizing Tab (TR-LT246) - Ver.#1 ARTICLE: OVOW23_181_T/ LBOVO175				1	Each		Reca Mainetti Asia Ltd	LBOVO175	None	None

Bill of Materials - #1										Version 1
	Article Code	M-0226-KB-6876		MESH - 100% POLYESTER, 230GSM-MA-061 (FB-K692)		Product Group		BOTTOM		
	Article Name	MENS MESH TROUSER				Product Sub-Category		PANT - ACTIVE		
	Created On	05-20-2025 10:45:00 AM	Material			Season		Q2 2026		
	Last Modified	11-17-2025 3:49:00 PM	Description			Life Cycle Stage		Sample Evaluation		
Part	Material		Placement	Consumption	UOM.	Comments	Supplier	Supplier Ref.	BK BLACK	FE FEATHER GREY
DRAWCORD	11MM FLAT DRAWCORD WITH ACETATE TIPS (TR-DR238) - Ver.#1		INTERNAL WB	1	Each				WHISPER WHITE WHS 11-0701 TCX CREAM	WHISPER WHITE WHS 11-0701 TCX CREAM
	BUTTON HOLE HIGH STITCH COUNT (BB105) - Ver.#1		INTERNAL WB	2	Each		Vendor Sourced		None	None
	TAPE - AS PER PROTO (TV108) - Ver.#1		BOTTOM OPENING	0	Meter				WHISPER WHITE WHS 11-0701 TCX CREAM	WHISPER WHITE WHS 11-0701 TCX CREAM
	20L matte nylon plancer snaps (TR-HD284) - Ver.#1		BACK POCKET - HIDDEN	0	Each		Vendor Sourced		DYED TO MATCH BODY DTMB	DYED TO MATCH BODY DTMB
Graphics										
	TBD - SEE ARTWORK FILE (HT-102) - Ver.#1			0	Each				None	None

Bill of Materials - #1 Material Image Sheet						Version 1
	Article Code	M-0226-KB-6876		Product Group	BOTTOM	
	Article Name	MENS MESH TROUSER		Product Sub-Category	PANT - ACTIVE	
	Created On	05-20-2025 10:45:00 AM		Season	Q2 2026	
	Last Modified	11-17-2025 3:49:00 PM		Life Cycle Stage	Sample Evaluation	
			Material Description	MESH - 100% POLYESTER, 230GSM-MA-061 (FB-K692)		
						
FB-K692 MESH - 100% POLYESTER, 230GSM-MA-061	FB-K1291 DAZZLE TRICOT, 170GSM REF# HM231155	LT110 CC LABEL - APPAREL	PK101 POLY BAG - GENERIC	TR-ST114 UPC STICKER- 1" X 2.5"	TR-HG142 OVO 2023 Booklet Hangtag	
						
LT138 TEAR-AWAY COO TAB: OVOF21_217_T	TR-TV140 5mm GROSGRAIN RIBBON LOOP	TR-LT252 OVO 2023 Main Loop Label	TR-LT246 OVO 2023 Alpha Sizing Tab	TR-DR238 11MM FLAT DRAWCORD WITH ACETATE TIPS		

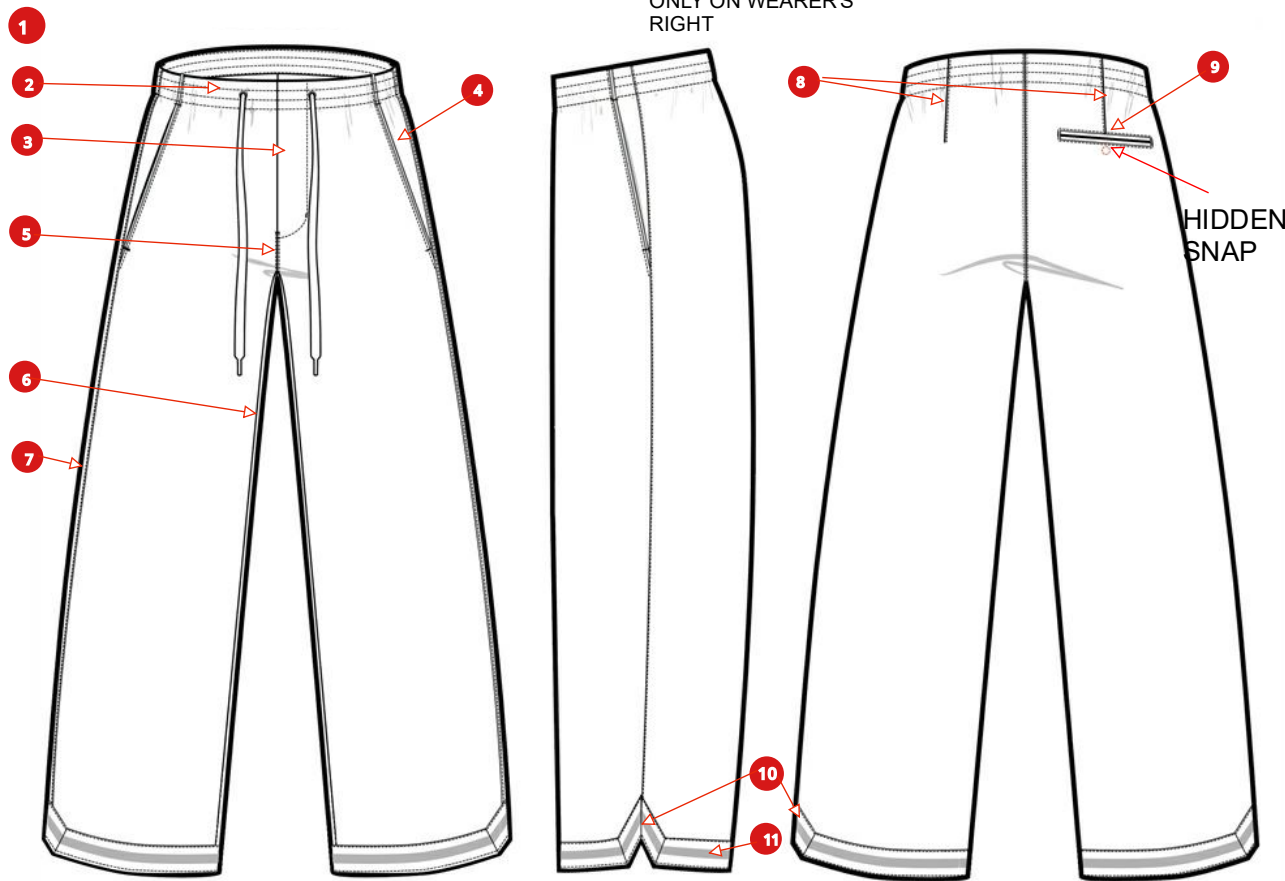
Construction details - TROUSER						Version 1
Article Code	M-0226-KB-6876		MESH - 100% POLYESTER, 230GSM-MA-061 (FB-K692)	Product Group	BOTTOM	
Article Name	MENS MESH TROUSER			Product Sub-Category	PANT - ACTIVE	
Created On	05-20-2025 10:45:00 AM			Season	Q2 2026	
Last Modified	11-17-2025 3:49:00 PM			Life Cycle Stage	Sample Evaluation	



Comments

- 1 BODY HALF LINED TO THE KNEE WITH CONTRAST LINING. INTERNAL SEAMS JOIN WITH #512 MOCK SAFETY STITCH.
- 2 WAISTBAND
Self extending WB from body panels, cleanfinished with the inside with Contrast facings. Elastic encased in WB. Seams join with #512 mock safety stitch. Inside bottom edge of facing turned under to cleanfinish, join to body with 1-needle topstitch. 1-needle edge understitch at inside top WB. 2 rows of 1-needle chain topstitch forming drawcord casing, spaced 12/" apart. High thread count eyelets at EXTERIOR CF for drawcord exits. Drawcord encased in WB, tacked to the inside CB.
- 3 FAKE FLY
Fake fly at CF, cleanfinished at the inside with Contrast fly facing. 1-needle topstitch forming "J" stitch at front. Horizontal bartack at the bottom of the fly. Vertical bartack at the side of the "J" stitch.
Inside seam allowances cleanfinished with Contrast bias binding. 1-needle edge topstitch on binding.
- 4 FRONT POCKETS
Slash pockets at front, with self facing set behind the opening. Flat CONTRAST bias piping set into the front pocket opening, 1/8" wide. Join with lockstitch. 1-needle edge topstitch at pocket opening edge.
Front pocket edge finished at the inside with Contrast pocket bag. Back facing join to pocket bag with #512 mock safety stitch. Pocket bag join with #512 mock safety stitch. Bag finished into the WB and side seams.
Bartacks at ends of pocket openings CATCHING PIPING, MAKE SURE IT IS SITTING HORIZONTALLY
- 5 FRONT/ BACK RISES
Join with #512 mock safety stitch. 2-needle coverstitch straddling seam, 1/4" spacing.
- 6 INSEAM
Join with #512 mock safety stitch
- 7 OUTSEAM
Join with #512 mock safety stitch, SN EDGE TOP STITCH AT BACK WITH SEAM ALLOWANCE PRESSED TOWARDS BACK.
- 8 BACK DARTS
2 darts at back waistband. Seam allowances pressed towards CB. 1-needle edge topstitch. left dart end align to bottom of welt pocket on right side

BACK WELT POCKET
ONLY ON WEARER'S
RIGHT



Comments

- 1 BODY HALF LINED TO THE KNEE WITH CONTRAST LINING. INTERNAL SEAMS JOIN WITH #512 MOCK SAFETY STITCH.

Thân quần lót đến đầu gối, vắt sổ các đường may bên trong

- 2 WAISTBAND
Self extending WB from body panels, cleanfinished with the inside with Contrast facings. Elastic encased in WB. Seams join with #512 mock safety stitch. Inside bottom edge of facing turned under to cleanfinish, join to body with 1-needle topstitch. 1-needle edge understitch at inside top WB. 2 rows of 1-needle chain topstitch forming drawcord casing, spaced 12/" apart. High thread count eyelets at EXTERIOR CF for drawcord exits. Drawcord encased in WB, tacked to the inside CB.

Lưng quần

Lưng liền từ thân, may sạch với nẹp vải phối. May kẹp thun. Vắt sổ. Cạnh dưới nẹp gấp vào trong may sạch. Điều 1k.

Điều mí 1k bên trong cạnh trên nẹp trong-k lộ ra ngoài.

Điều 2 đường 1k móc xích để tạo dây luồn, cách nhau 1/2"

Lỗ khuy tròn bên ngoài, đính dây luồn vào thân ở giữa lưng sau cho không bị tuột

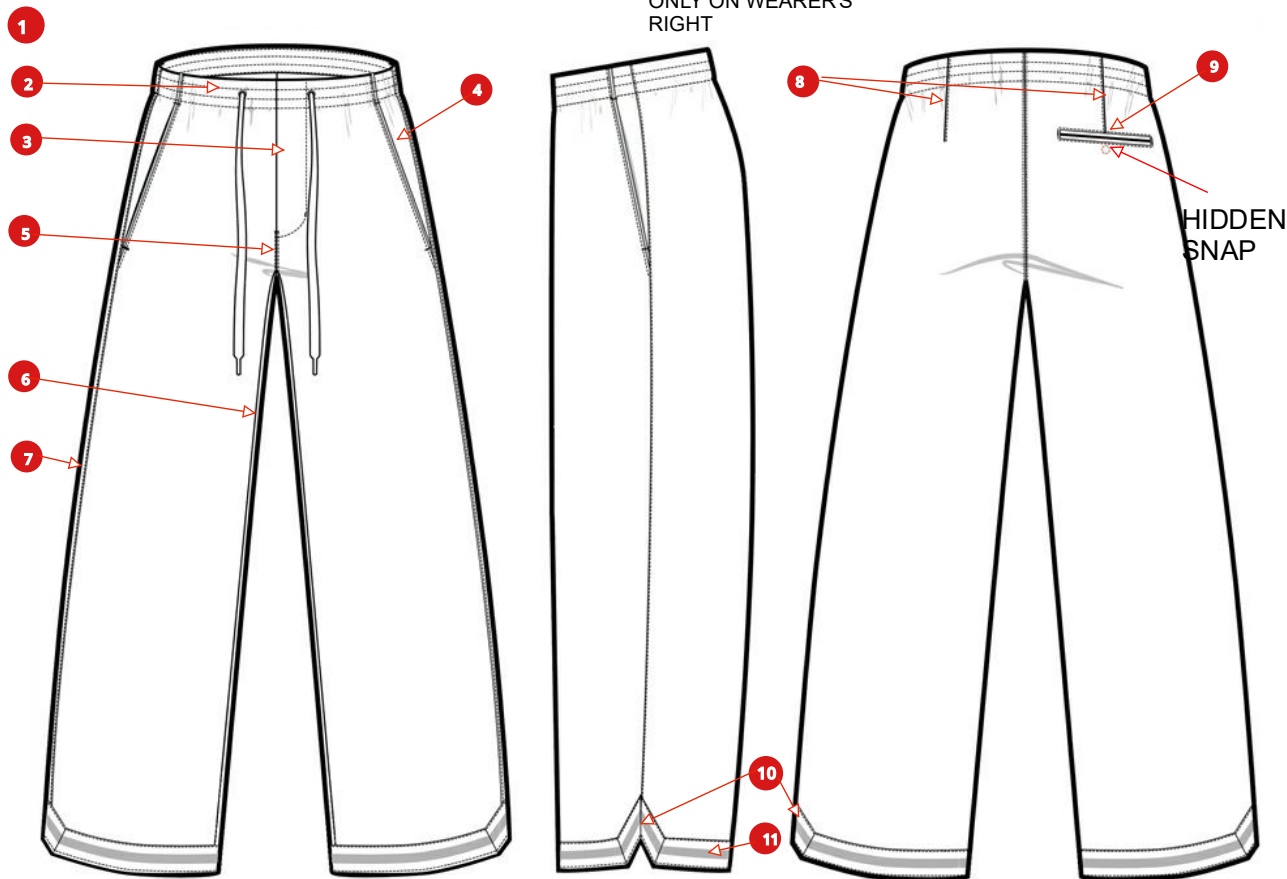
3 FAKE FLY

Fake fly at CF, cleanfinished at the inside with Contrast fly facing. 1-needle topstitch forming "J" stitch at front. Horizontal bartack at the bottom of the fly. Vertical bartack at the side of the "J" stitch.

Inside seam allowances cleanfinished with Contrast bias binding. 1-needle edge topstitch on binding.

Baget giả: ở giữa trước, may sạch với vải phối. Điều 1k chữ J ở giữa thân. Đánh bộ ngang tại đáy baget. Đóng bộ dọc ở cạnh chữ J.

Bên trong nẹp baget may bọc viền vải phối và điều 1k xung quanh



- 4 FRONT POCKETS**
 Slash pockets at front, with self facing set behind the opening. Flat CONTRAST bias piping set into the front pocket opening, 1/8" wide. Join with lockstitch. 1-needle edge topstitch at pocket opening edge.
 Front pocket edge finished at the inside with Contrast pocket bag. Back facing join to pocket bag with #512 mock safety stitch. Pocket bag join with #512 mock safety stitch. Bag finished into the WB and side seams.
 Bartacks at ends of pocket openings CATCHING PIPING, MAKE SURE IT IS SITTING HORIZONTALLY

Túi trước: túi xéo, nẹp = vải chính, kẹp viền piping = vải phối 1/8", điều 1k ở miệng túi.

Túi trước = vải chính. Nẹp túi vắt sổ, bao túi vắt sổ. Túi được may sạch vào lưng thun và sườn ngoài. Đóng bộ ngang miệng túi chắn ngang viền piping. Xem minh họa trang tiếp theo

- 5 FRONT/ BACK RISES**
 Join with #512 mock safety stitch. 2-needle coverstitch straddling seam, 1/4" spacing.

Đáy trước/ sau: Vắt sổ, điều rẽ 2k đánh bông dưới

- 6 INSEAM**
 Join with #512 mock safety stitch

Sườn trong: Vắt sổ

- 7 OUTSEAM**
 Join with #512 mock safety stitch, SN EDGE TOP STITCH AT BACK WITH SEAM ALLOWANCE PRESSED TOWARDS BACK.

Sườn ngoài: Vắt sổ và điều mí 1k, úi ép về thân sau

- 8 BACK DARTS**
 2 darts at back waistband. Seam allowances pressed towards CB. 1-needle edge topstitch. Left dart end align to bottom of welt pocket on right side

Chiết pen sau:
 2 chiết pen ở lưng quần sau. Chừa đường may úi về giữa thân sau. Điều 1k xung quanh. Độ dài chiết pen bên trái người mặc kéo dài đến cơi túi dưới như bên phải người mặc

Túi sau - bên phải người mặc

Coi túi bằng vải chính, điều mí 1k xung quanh. Đóng bộ 2 đầu miệng túi. Bao túi tra vào lưng quần. Nút ẩn đóng vào lưng quần.

Xẻ tà:

Xẻ tà ở lai, đỉnh nhọn ở sườn ngoài. Mép được gấp ra ngoài và may sạch với dây tape. Dây tape được may gấp gọn ở các góc. Mí xung quanh 2 cạnh dây tape.

Cửa chân

Mép được gấp ra ngoài và may sạch với dây tape. Dây tape được may gấp gọn ở các góc. Mí xung quanh 2 cạnh dây tape.)

9 BACK POCKET (WEARER'S RIGHT SIDE)

Self double welt pocket at back. 1-needle edge topstitch around. Bartacks at the sides of the pocket openings. Contrast pocket bags, join with #512 mock safety stitch. Bags finished into the WB seam.


Hidden single snap closure at bottom applied to pocket bag.

10 SIDE SLITS

Open slit at bottom, to point at top along the side seam. Edges folded out, cleanfinished with top applied trim. Trim is mitred at corners. 1-needle edge topstitch at top and bottom of trim.

11 LEG OPENINGS

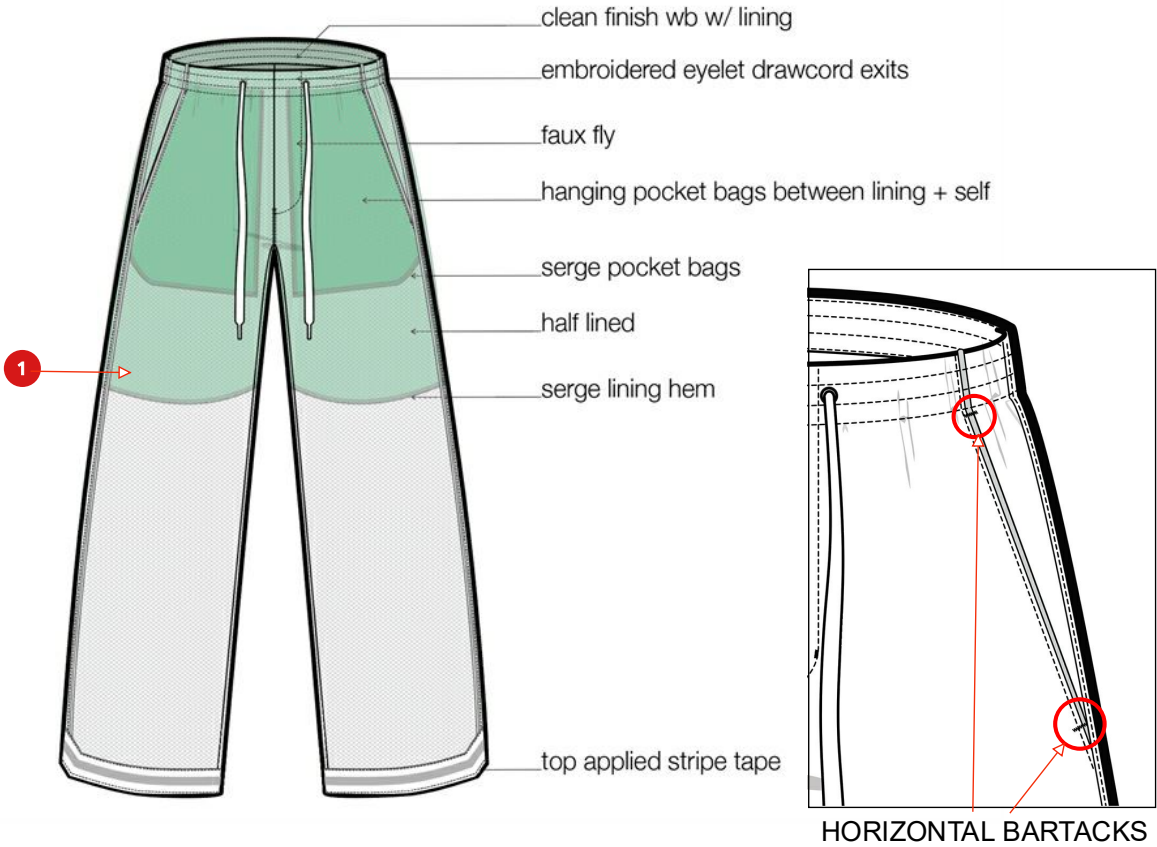
Bottom edges turned out, cleanfinished with top applied trim. 1-needle edge topstitch on the trim.

Construction details -LINING/ POCKET DETAILS						Version 1
Article Code	M-0226-KB-6876	Material Description	MESH - 100% POLYESTER, 230GSM-MA-061 (FB-K692)	Product Group	BOTTOM	
Article Name	MENS MESH TROUSER			Product Sub-Category	PANT - ACTIVE	
Created On	05-20-2025 10:45:00 AM			Season	Q2 2026	
Last Modified	11-17-2025 3:49:00 PM			Life Cycle Stage	Sample Evaluation	


Comments

- 1
- LINING
Contrast lining to the knee. Seams join with #512 mock safety stitch. Bottom edges of lining serged. Lining finished into the inside WB seam.


Lót: Vải lót phối tới lai vắt sổ, lai lót được vắt sổ
Lót quần được may vào lưng quần



Thêm đóng bọ ở 2 đầu miệng túi như hình

	Measurement- TROUSER					All measurements are in Inch		Version 1
	Article Code	M-0226-KB-6876				Product Group	BOTTOM	
	Article Name	MENS MESH TROUSER				Product Sub-Category	PANT - ACTIVE	
	Created On	05-20-2025 10:45:00 AM				Season	Q2 2026	
	Last Modified	11-17-2025 3:49:00 PM				Life Cycle Stage	Sample Evaluation	
			Material	MESH - 100% POLYESTER, 230GSM-MA-061 (FB-K692)				
			Description					

	POM Code	POM Name		-Tol	+Tol	Grade	XXS	XS	S	M	L	XL	XXL	3XL			
!	J101	Waist measurement relaxed :: 1/2 body	Ngang lưng - đo thường	1/2	1/2	Mixed	13	14	15	16	17	18 1/2	20	21 1/2			
!	J104	WB height	Cao lưng quần	1/8	1/8	0	1 3/8	1 3/8	1 3/8	1 3/8	1 3/8	1 3/8	1 3/8	1 3/8			
	J502	Drawcord eyelet exit distance	Khoảng cách khuy mắt cáo	1/8	1/8	0	2 1/2	2 1/2	2 1/2	2 1/2	2 1/2	2 1/2	2 1/2	2 1/2			
!	K101	Hip at 1" below WB seam: waist pattern mmt.	Ngang hông dưới đường tra lưng 1"	1/2	1/2	Mixed	18	19	20	21	22	23 1/2	25	26 1/2			
!	K102	Full Hip: 4" above crotch point, 3 xpt. Measure	Ngang hông đo tại 4" trên dây - đo	1/2	1/2	Mixed	21	22	23	24	25	26 1/2	28	29 1/2			
	M101	Thigh :: 1" below crotch seam	Đùi - dưới dây 1"	1/4	1/4	Mixed	11 7/8	12 1/2	13 1/8	13 3/4	14 3/8	15 1/4	16 1/4	17 1/4			
	M106	Knee position from crotch pt @ inseam	Vị trí gối từ dây đo ở sườn trong	1/4	1/4	Mixed	11 3/4	11 3/4	12	12	12	12 1/4	12 1/4	12 1/4			
	M103	Knee Width	Ngang gối	1/4	1/4	Mixed	10 3/8	10 3/4	11 1/8	11 1/2	11 7/8	12 3/8	12 7/8	13 3/8			
!	I101	Inseam length :: long pant	Dài sườn trong	1/2	1/2	Mixed	29 1/2	29 1/2	29 1/2	29 1/2	29 1/2	30	30	30			
!	M201	Leg opening: Long, ABOVE SLIT	Cửa chân - trên xẻ tà	1/4	1/4	1/4	10 1/4	10 1/2	10 3/4	11	11 1/4	11 1/2	11 3/4	12			
	Q201	Side slit height at centre	Cao xẻ tà đo ở giữa	1/8	1/8	0	1 3/4	1 3/4	1 3/4	1 3/4	1 3/4	1 3/4	1 3/4	1 3/4			
	A701	Side slit opening width at bottom	Rộng xẻ tà ở lại	1/8	1/8	0	1 1/2	1 1/2	1 1/2	1 1/2	1 1/2	1 1/2	1 1/2	1 1/2			
!	L103	Front rise :: Incl WB	Dài dây trước	1/4	1/4	Mixed	12 7/8	13 1/4	13 5/8	14	14 3/8	14 3/4	15 1/4	15 5/8			
!	L203	Back rise :: Incl WB	Dài dây sau	1/4	1/4	Mixed	15 7/8	16 1/4	16 5/8	17	17 3/8	17 3/4	18 1/4	18 5/8			
!	L302	Front fly length :: WB seam to bottom T/S outline	Dài baget trước - từ đm may lưng	1/4	1/4	Mixed	6 1/4	6 1/4	6 1/2	6 1/2	6 1/2	6 3/4	6 3/4	6 3/4			
	L301	Front fly width :: edge to T/S outline	Ngang baget - mềp đến đường điều	1/8	1/8	0	1 1/4	1 1/4	1 1/4	1 1/4	1 1/4	1 1/4	1 1/4	1 1/4			
	C202	Side seam forward position, fr fold AT TOP	Chồm sườn về thân trước - từ	1/8	1/8	0	1	1	1	1	1	1	1	1			
!	N402	Side seam forward position, from fold: AT LEG OP	Chồm sườn về thân trước - từ	1/8	1/8	0	1/2	1/2	1/2	1/2	1/2	1/2	1/2	1/2			
	N501	Front pocket opening at WB seam :: from S.S.	Rộng miệng túi trước đường may ở	1/4	1/4	1/8	1 7/8	2	2 1/8	2 1/4	2 3/8	2 1/2	2 5/8	2 3/4			
	N502	Front pocket opening at side seam fr WB seam	Dài miệng túi trước đo ở sườn ngoài	1/4	1/4	1/8	6 1/8	6 1/4	6 3/8	6 1/2	6 5/8	6 3/4	6 7/8	7			
	N211	Front pocket bag FINISHED height :: at center	Dài bao túi trước thành phẩm - đo ở	1/4	1/4	Mixed	11	11	11 1/2	11 1/2	11 1/2	11 1/2	11 1/2	11 1/2			
	N212	Front pocket bag FINISHED width:: at widest pt.	Rộng bao túi trước thành phẩm - đo	1/4	1/4	Mixed	7	7 1/4	7 1/4	7 1/2	7 1/2	7 3/4	8	8			
!	N701	Back pocket opening length	Dài miệng túi sau	1/4	1/4	Mixed	5 1/2	5 3/4	5 3/4	6	6	6 1/4	6 1/2	6 1/2			
	N601C	Back pocket total welt height	Cao cơi túi sau	1/4	1/4	0	1/2	1/2	1/2	1/2	1/2	1/2	1/2	1/2			
	N703	Back pocket from WB seam	Định vị túi sau từ đm lưng	1/8	1/8	1/8	1 7/8	2	2 1/8	2 1/4	2 3/8	2 1/2	2 5/8	2 3/4			
	N508	Back pocket position from CB seam	Định vị túi sau từ đường may giữa	1/8	1/8	Mixed	1 5/8	2 1/4	1 7/8	2	2 1/8	2 1/4	2 3/8	2 1/2			
	N507	Back pkt bag height:fr WB seam to bottom edge	Dài bao túi sau từ đm lưng đến dây	1/4	1/4	Mixed	8	8	8	8	8	8 1/2	8 1/2	8 1/2			
	N509	Back pkt bag width :: at widest point	Ngang bao túi sau đo tại điểm rộng	1/4	1/4	Mixed	7	7 1/4	7 1/4	7 1/2	7 1/2	7 3/4	8	8			
!	J501	Drawcord length : waist	Dài dây lườn	1	1	Mixed	56	58	60	62	64	65	70	73			
!	I302	Lining Inseam length :: short	Dài lót trong tại sườn trong	1/4	1/4	Mixed	14	14	14	14	14	14 1/4	14 1/4	14 1/4			
	N507	Back pkt bag height:fr WB seam to bottom edge				1/4	1/4	Mixed	8	8	8	8	8	8 1/2	8 1/2	8 1/2	
	N509	Back pkt bag width :: at widest point				1/4	1/4	Mixed	7	7 1/4	7 1/4	7 1/2	7 1/2	7 3/4	8	8	
!	J501	Drawcord length : waist				1	1	Mixed	56	58	60	62	64	65	70	73	
!	I302	Lining Inseam length :: short				1/4	1/4	Mixed	14	14	14	14	14	14 1/4	14 1/4	14 1/4	

Measurement- TROUSER					All measurements are in Inch		Version 1
	Article Code	M-0226-KB-6876			Product Group	BOTTOM	
	Article Name	MENS MESH TROUSER			Product Sub-Category	PANT - ACTIVE	
	Created On	05-20-2025 10:45:00 AM			Season	Q2 2026	
	Last Modified	11-17-2025 3:49:00 PM			Life Cycle Stage	Sample Evaluation	
			Material Description	MESH - 100% POLYESTER, 230GSM-MA-061 (FB-K692)			

NOTES

REFERENCE: M-0225-KB-5691 Mini OG open hem pant with modifications


**** Please ensure the leg side seam and inseams are straight from the thigh to the leg opening, knee width will be added after reviewing proto sample**

**** Please submit a copy of the paper pattern with samples for reference**

****Ensure the crotch width is graded -/+1/4"**

Vui lòng đảm bảo sườn trong và ngoài thẳng từ gối đến cửa chân, ngang gối được thêm vào sau khi review mẫu proto
Vui lòng gửi rập giấy cùng với mẫu fit để tham khảo
Đảm bảo ngang đáy nhảy size thông số +/- 1/4"


Gro	POM	Description		+ Tol	- Tol	M	Sample	Diff	Revised		
	J101	Waist measurement relaxed :: 1/2 body	Ngang lưng - đo thường	1/2	1/2	16	16	0			
	J104	WB height	Cao lưng quần	1/8	1/8	1 3/8	1 3/8	0			
	J502	Drawcord eyelet exit distance	Khoảng cách khuy mắt cáo	1/8	1/8	2 1/2	2 1/2	0			
	K101	Hip at 1" below WB seam: waist pattern mmt.	Ngang hông dưới đường tra lưng 1"	1/2	1/2	21	21 1/2	1/2			
	K102	Full Hip: 4" above crotch point, 3 xpt. Measure	Ngang hông đo tại 4" trên dây - đo	1/2	1/2	24	24	0			
	M101	Thigh :: 1" below crotch seam	Đùi - dưới dây 1"	1/4	1/4	13 3/4	13 3/4	0			
	M106	Knee position from crotch pt @ inseam	Vị trí gối từ dây đo ở sườn trong	1/4	1/4	12	12	0			
	M103	Knee Width	Ngang gối	1/4	1/4	11 1/2	11 3/4	1/4			
	I101	Inseam length :: long pant	Dài sườn trong	1/2	1/2	29 1/2	29 1/4	-1/4			
	M201	Leg opening: Long, ABOVE SLIT*	Cửa chân - trên xẻ tà	1/4	1/4	11	10 3/4	-1/4			
	Q201	Side slit height at centre	Cao xẻ tà đo ở giữa	1/8	1/8	1 3/4	1 3/4	0			
	A701	Side slit opening width at bottom	Rộng xẻ tà ở lai	1/8	1/8	1 3/4	1 1/2	-1/4	1 1/2		
	L103	Front rise :: Incl WB	Dài dây trước	1/4	1/4	14	13 3/4	-1/4			
	L203	Back rise :: Incl WB	Dài dây sau	1/4	1/4	17	16 5/8	-3/8			
	L302	Front fly length :: WB seam to bottom T/S outline	Dài baget trước - từ đm may lưng	1/4	1/4	6 1/2	6 1/2	0			
	L301	Front fly width :: edge to T/S outline	Ngang baget - mép đến đường diều	1/8	1/8	1 1/4	1 1/4	0			
	C202	Side seam forward position, fr fold AT TOP	Chồm sườn về thân trước - từ	1/8	1/8	1	3/4	-1/4			
	N402	Side seam forward position, from fold: AT LEG OP	Chồm sườn về thân trước - từ	1/8	1/8	1/2	3/4	1/4			
	N501	Front pocket opening at WB seam :: from S.S.	Rộng miệng túi trước đường may ở	1/4	1/4	2 1/4	2	-1/4			
	N502	Front pocket opening at side seam fr WB seam	Dài miệng túi trước đo ở sườn ngoài	1/4	1/4	6 1/2	6 1/4	-1/4			
	N211	Front pocket bag FINISHED height :: at center	Dài bao túi trước thành phẩm - đo ở	1/4	1/4	11 1/2	11 1/2	0			
	N212	Front pocket bag FINISHED width:: at widest pt.	Rộng bao túi trước thành phẩm - đo	1/4	1/4	7 1/2	7 1/2	0			
	N701	Back pocket opening length	Dài miệng túi sau	1/4	1/4	6	6	0			
	N601C	Back pocket total welt height	Cao cơi túi sau	1/4	1/4	1/2	1/2	0			
	N703	Back pocket from WB seam	Định vị túi sau từ đm lưng	1/8	1/8	2 1/4	2 1/4	0			
	N508	Back pocket position from CB seam	Định vị túi sau từ đường may giữa	1/8	1/8	2	1 3/4	-1/4			
	N507	Back pkt bag height fr WB seam to bottom edge	Dài bao túi sau từ đm lưng đến dây	1/4	1/4	8	8	0			
	N509	Back pkt bag width :: at widest point	Ngang bao túi sau đo tại điểm rộng	1/4	1/4	7 1/2	7 3/4	1/4			
	J501	Drawcord length : waist	Dài dây luồn	1	1	70	54	-16	62		
	I302	Lining Inseam length :: short	Dài lót trong tại sườn trong	1/4	1/4	14	14	0			
	N601C	Back pocket total welt height		1/4		1/4	1/2	1/2	0		
	N703	Back pocket from WB seam		1/8		1/8	2 1/4	2 1/4	0		

UN-AVAILABLE CO. LTD: Fit Approval-2(Rev.1) 2nd fit [Sample 1 (M)]								Version 1
	Article Code	M-0226-KB-6876			Product Group	BOTTOM		
	Article Name	MENS MESH TROUSER			Product Sub-Category	PANT - ACTIVE		
	Created On	05-20-2025 10:45:00 AM	Material Description	MESH - 100% POLYESTER, 230GSM-MA-061 (FB-K692)	Season	Q2 2026		
	Last Modified	11-17-2025 3:49:00 PM			Life Cycle Stage	Sample Evaluation		

Group	POM	Description	+ Tol	- Tol	M	Sample	Diff	Revised
	N508	Back pocket position from CB seam	1/8	1/8	2	1 3/4	-1/4	
	N507	Back pkt bag height:fr WB seam to bottom edge	1/4	1/4	8	8	0	
	N509	Back pkt bag width :: at widest point	1/4	1/4	7 1/2	7 3/4	1/4	
	J501	Drawcord length : waist	1	1	70	54	-16	62
	I302	Lining Inseam length :: short	1/4	1/4	14	14	0	

Renamed Points of Measurement

STYLING COMMENTS:			
1.Keep only wearer's right side back welt pocket, removing left pocket, see construction page	Chỉ giữ túi bên phải người mặc, bỏ túi bên trái, xem trang quy cách may		
2. Remove piping on outseam, keep piping on front pocket opening, see construction page	Bỏ dây piping ở sườn, chỉ giữ dây piping ở miệng túi, xem trang quy cách may		
3. Please ensure back snap is hidden in pocket bag, see construction page	Đảm bảo nút ẩn cho túi		
4. Please serge seam allowance instead of binding seams, see construction page	Vui lòng vắt sổ đường may thay cho may viền, xem trang quy cách may		
5. Please ensure bartacks are horizontal and catching the piping in order to stabilize at front pocket	Đảm bảo bộ ngang và giữ được dây piping để cố định túi trước		
FITTING COMMENTS:			
1.Keep spec on side slit opening width at bottom measurement as per sample	Giữ thông số rộng xẻ tà ở lại như mẫu		
2. Bring back to spec on back rise measurement	Đảm bảo thông số đáy sau trong dung sai		
3. Bring back to spec on Side seam forward positions measurements	Đảm bảo thông số chồm sườn trong dung sai		
4. Bring back to spec on Back pocket position from CB seam measurements	Đảm bảo thông số vị trí túi sau từ giữa thân sau trong dung sai		
5. Revised drawcord length measurements	Điều chỉnh thông số dây luôn		
6. Ensure all measurements are brought back to spec.	Đảm bảo tất cả thông số trong dung sai		
WORKMANSHIP COMMENTS:			
1. Please ensure there is no excessive puckering on seams.	Đảm bảo đường may không bị nhăn đùn		
2. Ensure the hem edges are level at the CF.	Đảm bảo lai áo được cân bằng ở thân trước		
3. PLEASE ENSURE DRAWCORD AND ALL OTHER POMS ARE MEETING SPEC BEFORE SENDING, THANK YOU.	Đảm bảo thông số dây luôn chính xác		
2ND FIT IS REJECTED FOR FIT AND CONSTRUCTION, PLEASE PROCEED TO 3RD FIT WITH CORRECTIONS			

UN-AVAILABLE CO. LTD: Fit Approval-2(Rev.1) 2nd fit [Sample 1 (M)]							Version 1	
	Article Code	M-0226-KB-6876		MESH - 100% POLYESTER, 230GSM-MA-061 (FB-K692)	Product Group	BOTTOM		
	Article Name	MENS MESH TROUSER			Product Sub-Category	PANT - ACTIVE		
	Created On	05-20-2025 10:45:00 AM	Material		Season	Q2 2026		
	Last Modified	11-17-2025 3:49:00 PM	Description		Life Cycle Stage	Sample Evaluation		
Rejected By: KoryLui (October's Very Own Merchandising)								
Rejected On: 11-17-2025 3:51:00 PM								

UN-AVAILABLE CO. LTD: Fit Approval-2(Rev.1) 2nd fit - SAMPLE - FRONT, SIDE AND BACK

Version 1

Article Code	M-0226-KB-6876			Product Group	BOTTOM
Article Name	MENS MESH TROUSER			Product Sub-Category	PANT - ACTIVE
Created On	05-20-2025 10:45:00 AM	Material	MESH - 100% POLYESTER, 230GSM-MA-061 (FB-K692)	Season	Q2 2026
Last Modified	11-17-2025 3:49:00 PM	Description		Life Cycle Stage	Sample Evaluation

