








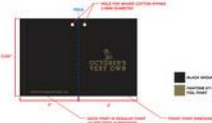



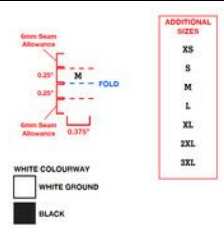



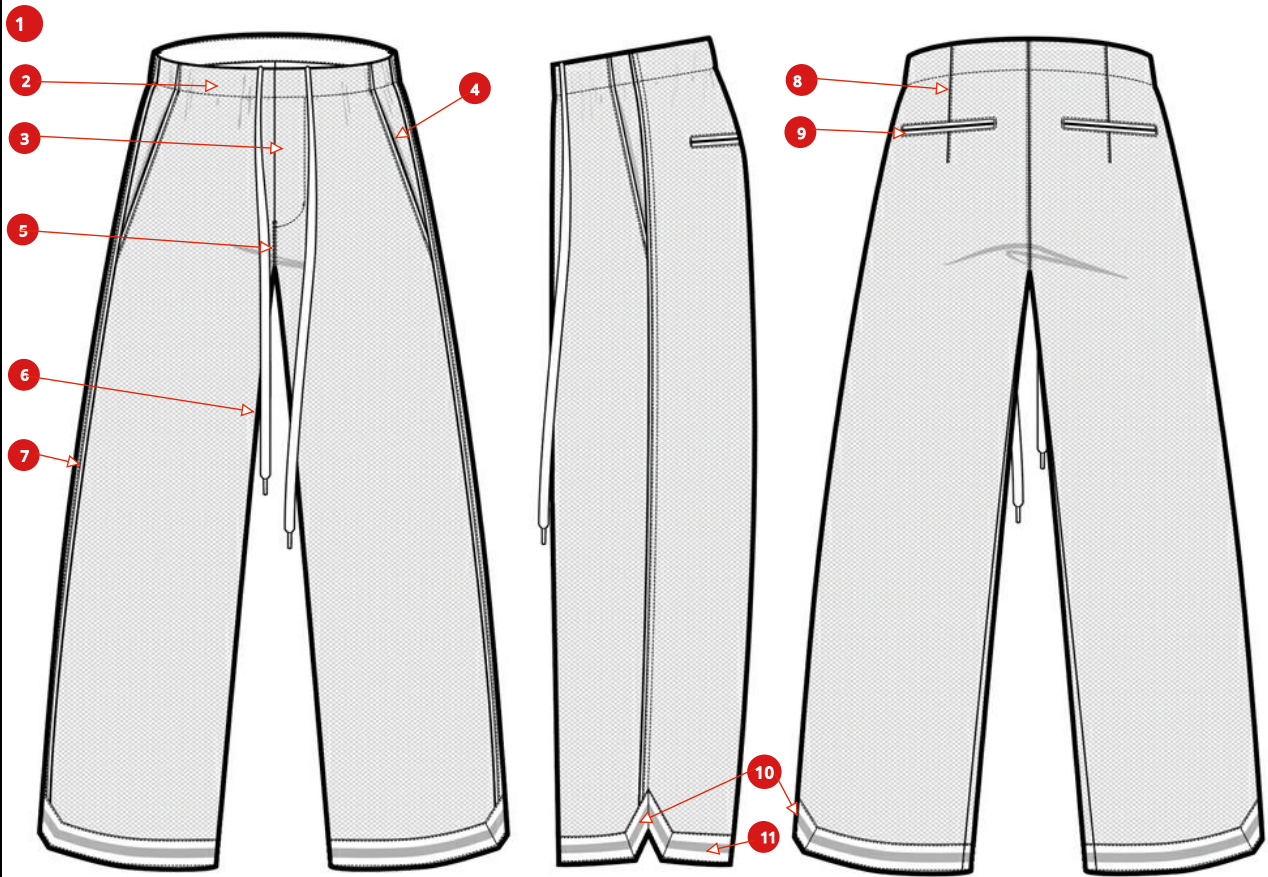
Article Summary							Version 1
	Article Code	M-0226-KB-6876		MESH - 100% POLYESTER, 230GSM-MA-061 (FB-K692)	Product Group	BOTTOM	
	Article Name	MENS MESH TROUSER			Product Sub-Category	PANT - ACTIVE	
	Created On	05-20-2025 10:45:10 AM			Season	Q2 2026	
	Last Modified	06-25-2025 10:47:32 AM			Life Cycle Stage	Development	
Gender Classification		Mens	Sub Class D	Pull on Pant	Fabrication		KNIT BOTTOM
Supplier		UN-AVAILABLE CO. LTD	Release Date	01 May 2026	Ex-Factory		03 Feb 2026
							COLORS
SIZES							
000, 001, 002, 003, 004, 005, 006, 007							

Bill of Materials										Version 1
	Article Code	M-0226-KB-6876		MESH - 100% POLYESTER, 230GSM-MA-061 (FB-K692)	Product Group		BOTTOM			
	Article Name	MENS MESH TROUSER			Product Sub-Category		PANT - ACTIVE			
	Created On	05-20-2025 10:45:10 AM	Material		Season		Q2 2026			
	Last Modified	06-25-2025 10:47:32 AM	Description		Life Cycle Stage		Development			
Part	Material			Placement	Qty.	UOM.	Comments	Supplier	Supplier Ref.	
Fabric										
BODY	MESH - 100% POLYESTER, 230GSM-MA-061 (FB-K692)			BODY, POCKETS BAGS	0	Meter				
	DAZZLE TRICOT, 170GSM REF# HM231155 (FB-K1291)			LINING, PIPING, BINDING	0	Meter			HM231155	
Trims										
SEE PLACEMENT FOR DETAILS	CC LABEL - APPAREL (LT110) White Satin ground, Black text COO, Content, and Care Instructions may vary by style.				1.00	Each		Laven Industries Ltd.		
SEE PLACEMENT FOR DETAILS	POLY BAG - GENERIC (PK101) Clear Plastic, with suffocation warning on back, UPC sticker placement on bottom right corner of bag.				1.00	Each		Vendor Sourced		
SEE PLACEMENT FOR DETAILS	UPC STICKER- 1" X 2.5" (TR-ST114) PLEASE PRINT WITH THERMAL PRINTER				1.00	Each				
WAISTBAND	ELASTIC PRESHRUNK (EC116) PLS REFER TO MEASUREMENT CHARTS FOR WIDTH SIZE			WB	1.00	Each				
SEE PLACEMENT FOR DETAILS	OVO 2023 Booklet Hangtag (TR-HG142) Article code: HTOVO141A				1.00	Each		Reca Mainetti Asia Ltd	HTOVO141A	
SEE PLACEMENT FOR DETAILS	TEAR-AWAY COO TAB: OVOF21_217_T (LT138) COUNTRY OF ORIGIN TAB			SINGLE STITCH- EASILY REMOVABLE	1.00	Each		Reca Mainetti Asia Ltd		
SEE PLACEMENT FOR DETAILS	5mm GROSGRAIN RIBBON LOOP (TR-TV140) FOR HANGTAG ATTACHMENT			FOR HANGTAG ATTACHMENT	1.00	Each		Vendor Sourced		
	OVO 2023 Main Loop Label (TR-LT252)				1.00	Each		Reca Mainetti Asia Ltd	LBOVO147	
	OVO 2023 Alpha Sizing Tab (TR-LT246) ARTICLE: OVOW23_181_T/ LBOVO175				1.00	Each		Reca Mainetti Asia Ltd	LBOVO175	
DRAWCORD	11MM FLAT DRAWCORD WITH ACETATE TIPS (TR-DR238)			INTERNAL WB	1.00	Each	WHITE ON ALL COLOURWAYS			
	BUTTON HOLE HIGH STITCH COUNT (BB105)			INTERNAL WB	2.00	Each		Vendor Sourced		
	TAPE - AS PER PROTO (TV108)			BOTTOM OPENING	0	Meter				
Graphics										
	TBD - SEE ARTWORK FILE (HT-102)				0	Each				

Bill of Materials							Version 1
	Article Code	M-0226-KB-6876		MESH - 100% POLYESTER, 230GSM-MA-061 (FB-K692)	Product Group	BOTTOM	
	Article Name	MENS MESH TROUSER			Product Sub-Category	PANT - ACTIVE	
	Created On	05-20-2025 10:45:10 AM	Material Description		Season	Q2 2026	
	Last Modified	06-25-2025 10:47:32 AM			Life Cycle Stage	Development	

Bill of Materials Material Image Sheet							Version 1
	Article Code	M-0226-KB-6876		Product Group	BOTTOM		
	Article Name	MENS MESH TROUSER			Product Sub-Category		PANT - ACTIVE
	Created On	05-20-2025 10:45:10 AM			Season		Q2 2026
	Last Modified	06-25-2025 10:47:32 AM			Life Cycle Stage		Development
			Material Description	MESH - 100% POLYESTER, 230GSM-MA-061 (FB-K692)			
							
FB-K692 MESH - 100% POLYESTER, 230GSM-MA-061	FB-K1291 DAZZLE TRICOT, 170GSM REF# HM231155		LT110 CC LABEL - APPAREL	PK101 POLY BAG - GENERIC	TR-ST114 UPC STICKER- 1" X 2.5"	TR-HG142 OVO 2023 Booklet Hangtag	
							
LT138 TEAR-AWAY COO TAB: OVOF21_217_T	TR-TV140 5mm GROSGRAIN RIBBON LOOP		TR-LT252 OVO 2023 Main Loop Label	TR-LT246 OVO 2023 Alpha Sizing Tab	TR-DR238 11MM FLAT DRAWCORD WITH ACETATE TIPS		

Construction details - TROUSER						Version 1
	Article Code	M-0226-KB-6876		MESH - 100% POLYESTER, 230GSM-MA-061 (FB-K692)	Product Group	BOTTOM
	Article Name	MENS MESH TROUSER			Product Sub-Category	PANT - ACTIVE
	Created On	05-20-2025 10:45:10 AM			Season	Q2 2026
	Last Modified	06-25-2025 10:47:32 AM			Life Cycle Stage	Development

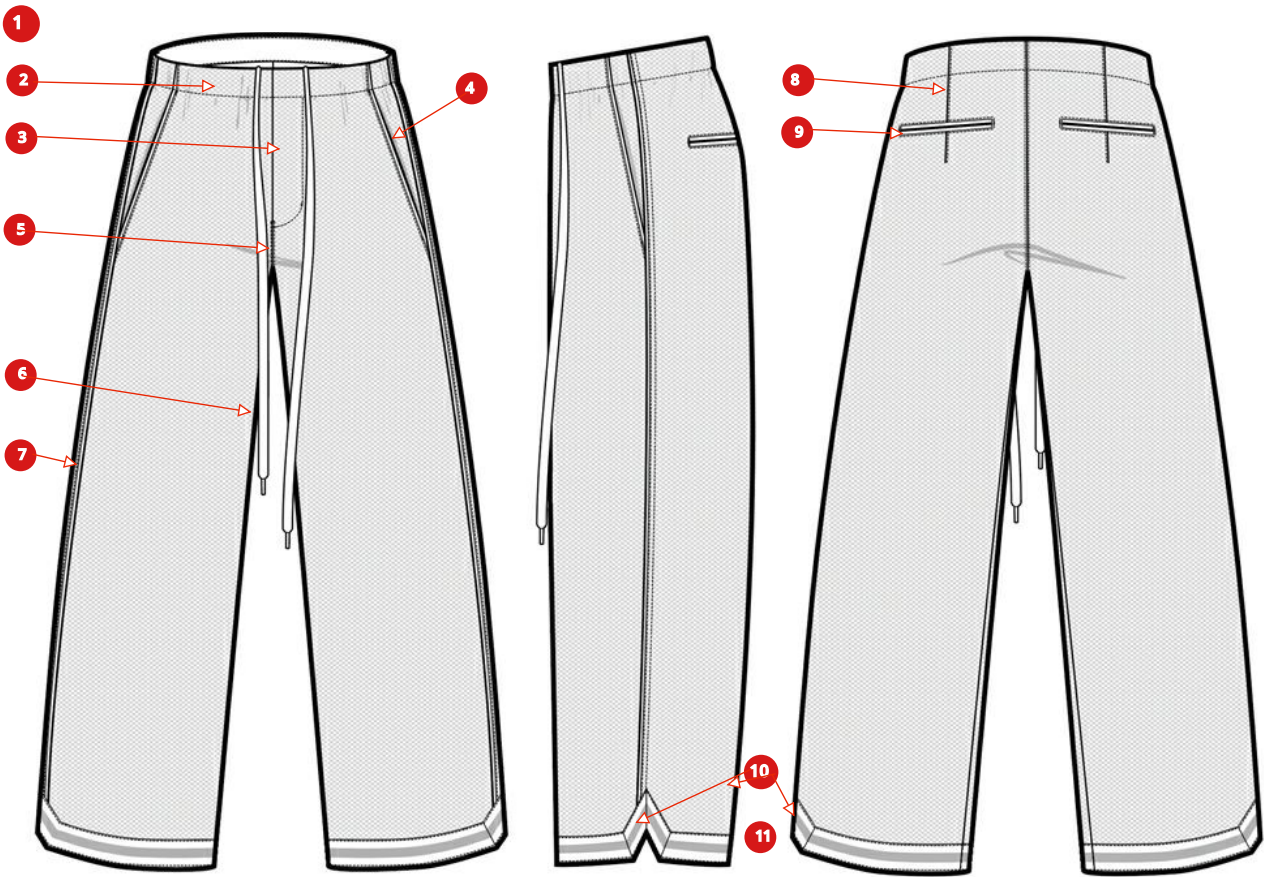


Comments

- 1
- BODY HALF LINED TO THE KNEE WITH CONTRAST LINING. INTERNAL SEAMS JOIN WITH #512 MOCK SAFETY STITCH.
- 2
- WAISTBAND  
Self extending WB from body panels, cleanfinished with the inside with Contrast facings. Elastic encased in WB. Seams join with #512 mock safety stitch. Inside bottom edge of facing turned under to cleanfinish, join to body with 1-needle topstitch. 1-needle edge understitch at inside top WB. High thread count eyelets at inside CF for drawcord exits. Drawcord encased in WB, tacked to the inside CB.
- 3
- FAKE FLY  
Fake fly at CF, cleanfinished at the inside with Contrast fly facing. 1-needle topstitch forming "J" stitch at front. Horizontal bartack at the bottom of the fly. Vertical bartack at the side of the "J" stitch.  
Inside seam allowances cleanfinished with Contrast bias binding. 1-needle edge topstitch on binding.
- 4
- FRONT POCKETS  
Slash pockets at front, with self facing set behind the opening. Flat Contrast bias piping set into the front pocket opening, 1/8" wide. Join with lockstitch. 1-needle edge topstitch at pocket opening edge.  
Front pocket edge finished at the inside with Contrast pocket bag. Back facing join to pocket bag with #512 mock safety stitch. Pocket bag join with #512 mock safety stitch. Bag finished into the WB and side seams.
- 5
- FRONT/ BACK RISES  
Join with #512 mock safety stitch. 2-needle coverstitch straddling seam, 1/4" spacing.
- 6
- INSEAM  
Seam joined with lockstitch. Seam allowances pressed open, edges cleanfinished with Contrast bias binding. 1-needle edge topstitch on seam binding.
- 7
- OUTSEAM  
Contrast flat bias piping inserted into the seam, pressed to the front. Seam joined with lockstitch. Seam allowances pressed open, edges cleanfinished with Contrast bias binding. 1-needle edge topstitch on seam binding.  
2-needle edge coverstitch on back, 1/4" spacing.
- 8
- BACK DARTS  
2 darts at back waistband. Seam allowances pressed towards



Construction details - TROUSER					Version 1	
	Article Code	M-0226-KB-6876	Material Description	MESH - 100% POLYESTER, 230GSM-MA-061 (FB-K692)	Product Group	BOTTOM
	Article Name	MENS MESH TROUSER			Product Sub-Category	PANT - ACTIVE
	Created On	05-20-2025 10:45:10 AM			Season	Q2 2026
	Last Modified	06-25-2025 10:47:32 AM			Life Cycle Stage	Development



### Comments

- 1 BODY HALF LINED TO THE KNEE WITH CONTRAST LINING. INTERNAL SEAMS JOIN WITH #512 MOCK SAFETY STITCH.

### Lót đến ngang gối, vắt sổ vào vải chính

- 2 WAISTBAND  
Self extending WB from body panels, cleanfinished with the inside with Contrast facings. Elastic encased in WB. Seams join with #512 mock safety stitch. Inside bottom edge of facing turned under to cleanfinish, join to body with 1-needle topstitch. 1-needle edge understitch at inside top WB. High thread count eyelets at inside CF for drawcord exits. Drawcord encased in WB, tacked to the inside CB.

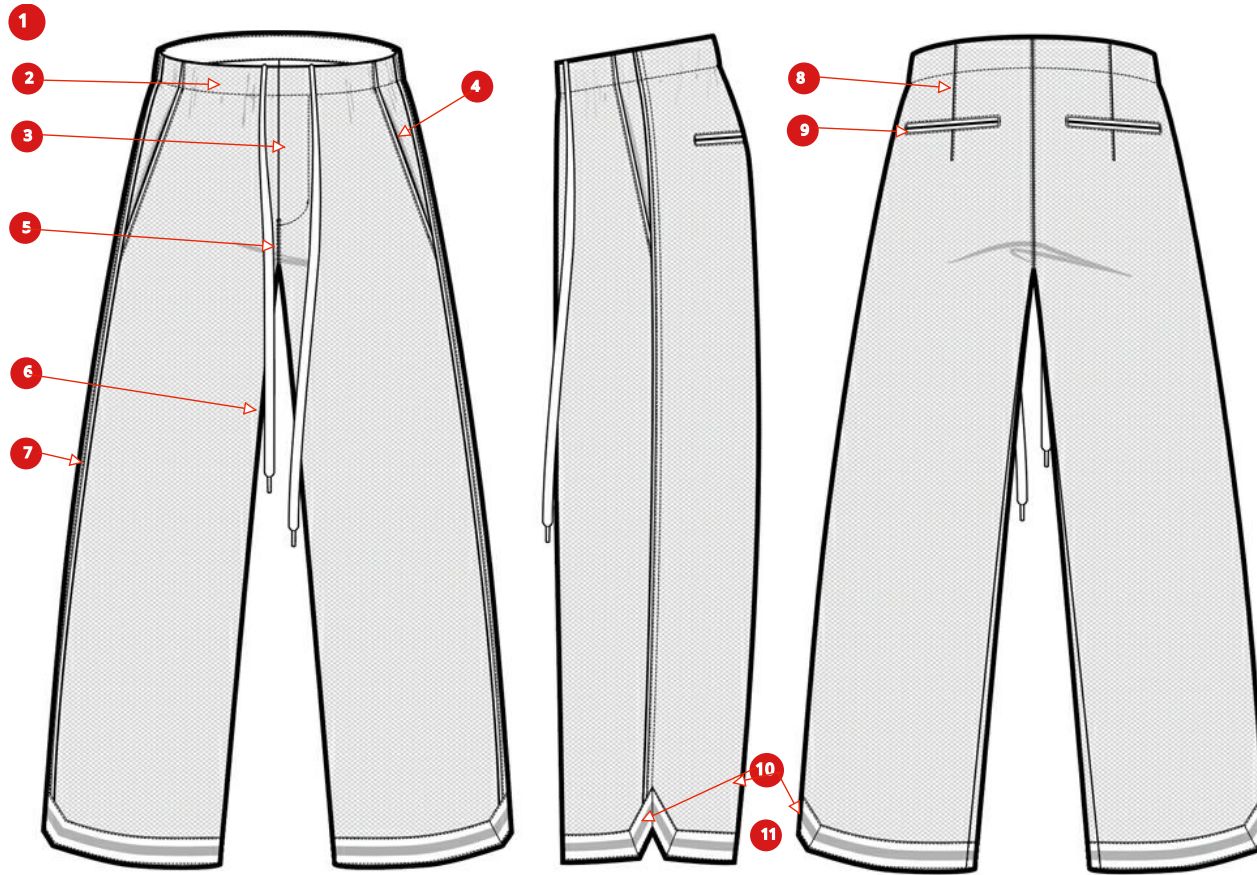
### Lưng quần

Lưng liền từ thân, may sạch với nẹp và phối. May kẹp thun. Vắt sổ. Cạnh dưới nẹp gấp vào trong may sạch. Điều 1k. Điều mí 1k bên trong cạnh trên nẹp trong-k lộ ra ngoài.

- 3 FAKE FLY  
Fake fly at CF, cleanfinished at the inside with Contrast fly facing. 1-needle topstitch forming "J" stitch at front. Horizontal bartack at the bottom of the fly. Vertical bartack at the side of the "J" stitch.  
Inside seam allowances cleanfinished with Contrast bias binding. 1-needle edge topstitch on binding.

Baget giả: ở giữa trước, may sạch với vải phối. Điều 1k chữ J ở giữa thân. Đánh bọ ngang tại đáy baget. Đóng bọ dọc ở cạnh chữ J.  
Bên trong nẹp baget may bọc viền và điều 1k xung quanh

## Comments



### 4 FRONT POCKETS

Slash pockets at front, with self facing set behind the opening. Flat Contrast bias piping set into the front pocket opening, 1/8" wide. Join with lockstitch. 1-needle edge topstitch at pocket opening edge.

Front pocket edge finished at the inside with Contrast pocket bag. Back facing join to pocket bag with #512 mock safety stitch. Pocket bag join with #512 mock safety stitch. Bag finished into the WB and side seams.

**Túi trước: Túi xéo ở thân trước, có nẹp ở bên trong miệng túi. Dây tim may dọc miệng túi to bản 1/8". Điều 1k mí vào thân.**

**Cạnh túi trước tra vào bên trong bao túi. Nẹp bên trong vắt sổ. Bao túi vắt sổ và tra vào lưng.**

### 5 FRONT/ BACK RISES

Join with #512 mock safety stitch. 2-needle coverstitch straddling seam, 1/4" spacing.

**Đáy trước/ đáy sau: Vắt sổ, điều rẽ 2k 1/4"**

### 6 INSEAM

Seam joined with lockstitch. Seam allowances pressed open, edges cleanfinished with Contrast bias binding. 1-needle edge topstitch on seam binding.

### Sườn trong:

**Ráp sườn bằng 1k, ủi rẽ**

**Viền bằng vải phối cắt xéo. Điều 1K xung quanh.**

### 7 OUTSEAM

Contrast flat bias piping inserted into the seam, pressed to the front. Seam joined with lockstitch. Seam allowances pressed open, edges cleanfinished with Contrast bias binding. 1-needle edge topstitch on seam binding. 2-needle edge coverstitch on back, 1/4" spacing.

### Sườn ngoài:

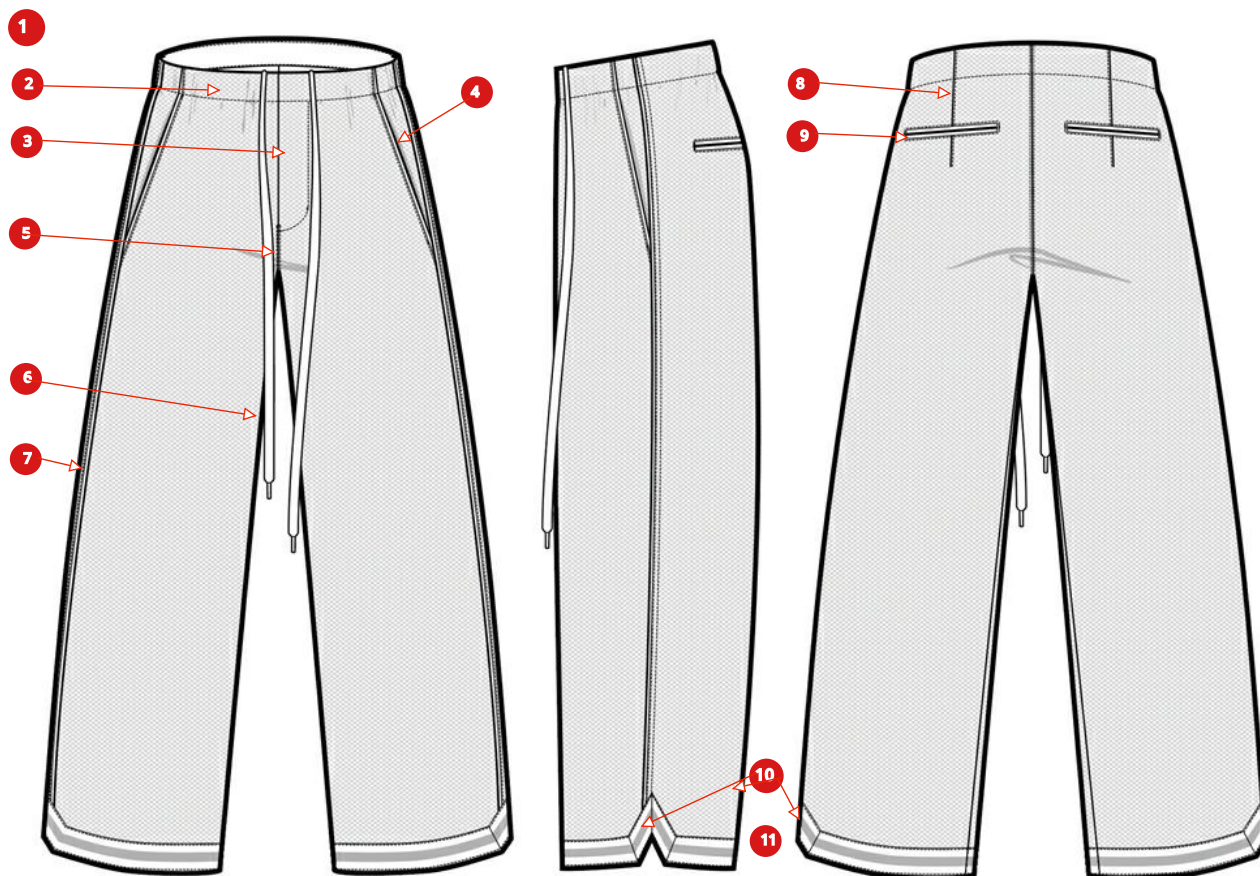
**Dây tim may kẹp vào giữa, ủi về thân trước. Ráp sườn bằng 1k, ủi rẽ. Viền bằng vải phối cắt xéo. Điều 1K xung quanh. Điều 2k 1/4" đánh bông ở thân sau**

### 8 BACK DARTS

2 darts at back waistband. Seam allowances pressed towards

**Chiết pen thân sau, chừa đường may ủi ép về phía trước.**





## Điều mí 1k ở đáy sau

CB. 1-needle edge topstitch.

9

### BACK POCKETS

Contrast double welt pockets at back. 1-needle edge topstitch around. Bartacks at the sides of the pocket openings. Contrast pocket bags, join with #512 mock safety stitch. Bags finished into the WB seam.

Hidden single snap closure at bottom applied to pocket bag.

### Túi sau:

**Cơ túi đôi ở thân sau. Điều 1k xung quanh.**

**Bộ ở 2 cạnh miệng túi.**

**Bao túi vải phối, vắt sổ vào thân.**

**Nút bấm ẩn bên trong túi**

10

### SIDE SLITS

Open slit at bottom, to point at top along the side seam. Edges folded out, cleanfinished with top applied trim. Trim is mitred at corners. 1-needle edge topstitch at top and bottom of trim.

### Xẻ tà

**Mở xẻ tà ở lai, nhọn ở sườn.**

**Mép gấp ra ngoài và điều tape sọc 1 1/4" trên.**

**Điều 1K tạo mũi nhọn và xung quanh dây tape.**

11


### LEG OPENINGS

Bottom edges turned out, cleanfinished with top applied trim. 1-needle edge topstitch on the trim.

### Cửa chân

**Mép cạnh dưới gấp ra ngoài, điều, điều mí 1k trên tape sọc.**




Construction details -LINING/ POCKET DETAILS					Version 1	
Article Code	M-0226-KB-6876	Material Description	MESH - 100% POLYESTER, 230GSM-MA-061 (FB-K692)	Product Group	BOTTOM	
Article Name	MENS MESH TROUSER			Product Sub-Category	PANT - ACTIVE	
Created On	05-20-2025 10:45:10 AM			Season	Q2 2026	
Last Modified	06-25-2025 10:47:32 AM			Life Cycle Stage	Development	




Comments

- 1 LINING  
Contrast lining to the knee. Seams join with #512 mock safety stitch. Bottom edges of lining serged.  
Lining finished into the inside WB seam.

**Lót trong tới gối, vắt sổ ở lai**  
**TRa lót trong vào lưng**

Measurement- TROUSER										All measurements are in Inch					Version 1	
	Article Code	M-0226-KB-6876		MESH - 100% POLYESTER, 230GSM-MA-061 (FB-K692)						Product Group		BOTTOM				
	Article Name	MENS MESH TROUSER								Product Sub-Category		PANT - ACTIVE				
	Created On	05-20-2025 10:45:10 AM								Material Description	Season		Q2 2026			
	Last Modified	06-25-2025 10:47:32 AM									Life Cycle Stage		Development			
POM Code	POM Name			-Tol	+Tol	Grade	XXS	XS	S	M	L	XL	XXL	3XL		
J101	Waist measurement relaxed :: 1/2 body		Ngang lưng - đo thường	1/2	1/2	Mixed	13	14	15	16	17	18 1/2	20	21 1/2		
J104	WB height		Cao lưng quần	1/8	1/8	0	1 3/8	1 3/8	1 3/8	1 3/8	1 3/8	1 3/8	1 3/8	1 3/8		5.08
J502	Drawcord eyelet exit distance		Khoảng cách khuy mắt cao	1/8	1/8	0	2	2	2	2	2	2	2	2		
K101	Hip at 1" below WB seam: waist pattern mmt.		Ngang hông dưới đường tra lưng 1"	1/2	1/2	Mixed	18	19	20	21	22	23 1/2	25	26 1/2		
K102	Full Hip: 4" above crotch point, 3 xpt. Measure		Ngang hông đo tại 4" trên đáy - đo 3 điểm	1/2	1/2	Mixed	21	22	23	24	25	26 1/2	28	29 1/2		
M101	Thigh :: 1" below crotch seam		Đùi - dưới đáy 1"	1/4	1/4	Mixed	11 7/8	12 1/2	13 1/8	13 3/4	14 3/8	15 1/4	16 1/4	17 1/4		
M106	Knee position from crotch pt @ inseam		Vị trí gối từ đáy đo ở sườn trong	1/4	1/4	Mixed	11 3/4	11 3/4	12	12	12	12 1/4	12 1/4	12 1/4		
M103	Knee Width		Ngang gối	1/4	1/4	Mixed	GA	GA	GA	GA	GA	GA	GA	GA		
I101	Inseam length :: long pant		Dài sườn trong	1/2	1/2	Mixed	32	32	32	32	32	32 1/2	32 1/2	32 1/2		
M201	Leg opening: Long, inside fold edges of opening		Cửa chân đo tại nếp	1/4	1/4	1/4	10 1/4	10 1/2	10 3/4	11	11 1/4	11 1/2	11 3/4	12		
Q201	Side slit height at centre		Cao xẻ tà đo ở giữa	1/8	1/8	0	1 1/2	1 1/2	1 1/2	1 1/2	1 1/2	1 1/2	1 1/2	1 1/2		
A701	Side slit opening width at bottom		Rộng xẻ tà ở lai	1/8	1/8	0	1 1/4	1 1/4	1 1/4	1 1/4	1 1/4	1 1/4	1 1/4	1 1/4		
L103	Front rise :: Incl WB		Dài dây trước	1/4	1/4	Mixed	12 7/8	13 1/4	13 5/8	14	14 3/8	14 3/4	15 1/4	15 5/8		
L203	Back rise :: Incl WB		Dài dây sau	1/4	1/4	Mixed	15 7/8	16 1/4	16 5/8	17	17 3/8	17 3/4	18 1/4	18 5/8		
L302	Front fly length :: WB seam to bottom T/S outline		Dài baget trước - từ đm may lưng đến dây đường điều baget	1/4	1/4	Mixed	6 1/4	6 1/4	6 1/2	6 1/2	6 1/2	6 3/4	6 3/4	6 3/4		
L301	Front fly width :: edge to T/S outline		Ngang baget - mép đến dây điều	1/8	1/8	0	1 1/4	1 1/4	1 1/4	1 1/4	1 1/4	1 1/4	1 1/4	1 1/4		
C202	Side seam forward position, fr fold		Chồm sườn về trước - từ dây sườn cơ bản	1/8	1/8	0	1/2	1/2	1/2	1/2	1/2	1/2	1/2	1/2		
N501	Front pocket opening at WB seam :: from S.S.		Rộng miệng túi trước đường may ở lưng quần - tính từ sườn	1/4	1/4	1/8	1 1/8	1 1/4	1 3/8	1 1/2	1 5/8	1 3/4	1 7/8	2		
N502	Front pocket opening at side seam fr WB seam		Dài miệng túi trước đo ở sườn ngoài đo từ đm lưng	1/4	1/4	1/8	6 1/8	6 1/4	6 3/8	6 1/2	6 5/8	6 3/4	6 7/8	7		
N211	Front pocket bag FINISHED height :: at center		Dài bao túi trước thành phẩm - đo ở giữa	1/4	1/4	Mixed	11	11	11 1/2	11 1/2	11 1/2	11 1/2	11 1/2	11 1/2		
N212	Front pocket bag FINISHED width:: at widest pt.		Rộng bao túi trước thành phẩm - đo ở điểm rộng nhất	1/4	1/4	Mixed	6 1/2	6 3/4	6 3/4	7	7	7 1/4	7 1/2	7 1/2		
N701	Back pocket opening length		Dài miệng túi sau	1/4	1/4	Mixed	5 1/2	5 3/4	5 3/4	6	6	6 1/4	6 1/2	6 1/2		
N601C	Back pocket total welt height		Cao cơi túi sau	1/4	1/4	0	1/2	1/2	1/2	1/2	1/2	1/2	1/2	1/2		
N703	Back pocket from WB seam		Định vị túi sau từ đm lưng	1/8	1/8	1/8	1 7/8	2	2 1/8	2 1/4	2 3/8	2 1/2	2 5/8	2 3/4		
N508	Back pocket position from CB seam		Định vị túi sau từ dây may giữa sau	1/8	1/8	Mixed	1 5/8	2 1/4	1 7/8	2	2 1/8	2 1/4	2 3/8	2 1/2		
N507	Back pkt bag height:fr WB seam to bottom edge		Dài bao túi sau từ đm lưng đến đáy túi	1/4	1/4	Mixed	9	9	9	9	9	9 1/2	9 1/2	9 1/2		
N509	Back pkt bag width :: at widest point		Ngang bao túi sau đo tại điểm rộng nhất	1/4	1/4	Mixed	6 1/2	6 3/4	6 3/4	7	7	7 1/4	7 1/2	7 1/2		
J501	Drawcord length : waist		Dài dây luồn	1	1	Mixed	64	66	68	70	72	73	78	81		
I302	Lining Inseam length :: short		Dài lót trong tại sườn trong	1/4	1/4	Mixed	14	14	14	14	14	14 1/4	14 1/4	14 1/4		

Measurement- TROUSER				All measurements are in Inch		Version 1
	Article Code	M-0226-KB-6876			Product Group	BOTTOM
	Article Name	MENS MESH TROUSER			Product Sub-Category	PANT - ACTIVE
	Created On	05-20-2025 10:45:10 AM			Season	Q2 2026
	Last Modified	06-25-2025 10:47:32 AM			Life Cycle Stage	Development
			Material Description	MESH - 100% POLYESTER, 230GSM-MA-061 (FB-K692)		

REFERENCE: M-0225-KB-5691 Mini OG open hem pant with modifications

**\*\* Please ensure the leg side seam and inseams are straight from the thigh to the leg opening, knee width will be added after reviewing proto sample**

**\*\* Please submit a copy of the paper pattern with samples for reference**

**\*\*Ensure the crotch width is graded -/+1/4"**