



PALACE

RANGE: JACKETS

SEASON: SPRING 2026

STYLENAME:  
PALACE SAN FRANCISCO GIANTS PULLOVER SHELL TOP

COLOURWAY:  
GREY

SKU CODE:  
P30JK044



FABRIC 1 REF:  
TASLAN NYLON 270T CRINKLE WR

LINING FABRIC REF:  
POLY MESH

RIB 1 REF:  
100% COTTON

BLOCK REF:  
JACKET BLOCK 30

PALACE

BRANDING: CENTRE FRONT  
PALACE FONT  
TYPE: SCREEN  
LOGO: WHITE  
SIZE: W 55 MM X H 12 MM

GIANTS

BRANDING: GIANTS ARCH  
COL: ORANGE / BLACK / GREY  
TYPE: SHELL APPLIQUE & EMB  
SIZE: W 420 MM X H 136MM



BRANDING: GIANTS SF LOGO  
COL: ORANGE / BLACK  
TYPE: SHELL APPLIQUE & EMB  
SIZE: W 250 MM X H 340MM



MAIN FABRIC QUAL/COL: MAIN FABRIC QUAL/COL: MAIN FABRIC QUAL/COL:

NIMBUS CLOUD  
13-4108 TPX

OYSTER MUSHROOM  
13-420 TPX

LOGO APPLIQUE  
JET BLACK  
19-0303 TPX

LINING QUAL/COL:

NIMBUS CLOUD  
13-4108 TPX

RIB COLOUR

NIMBUS CLOUD  
13-4108 TPX

3MM PALACE LOGO SHOCK CORD  
COL: BLACK + WHITE PRINT



RUBBER TOUCH

CORD LOCK: DURAFLEX  
SLIMMA MATTE BLACK X 1



+ TRI BEAD 1



EYELETS:  
DTM MATTE METAL  
ENAMEL



SIZE 9 MM

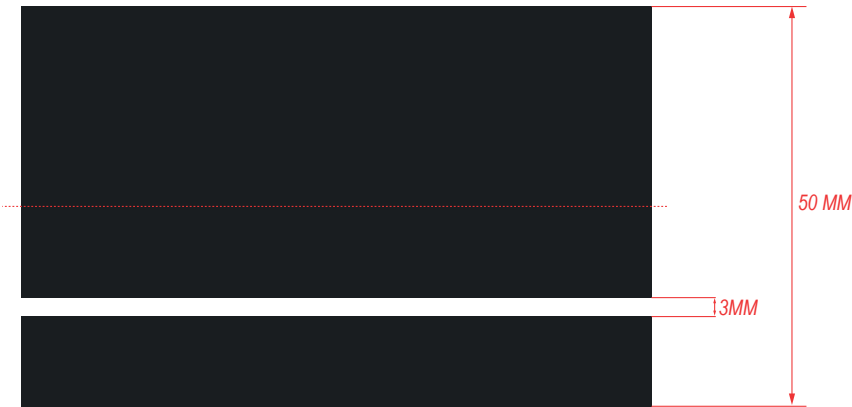
SHOCK CORD:  
TO FIT TRI-BEAD



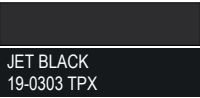
COL: PLAIN BLACK



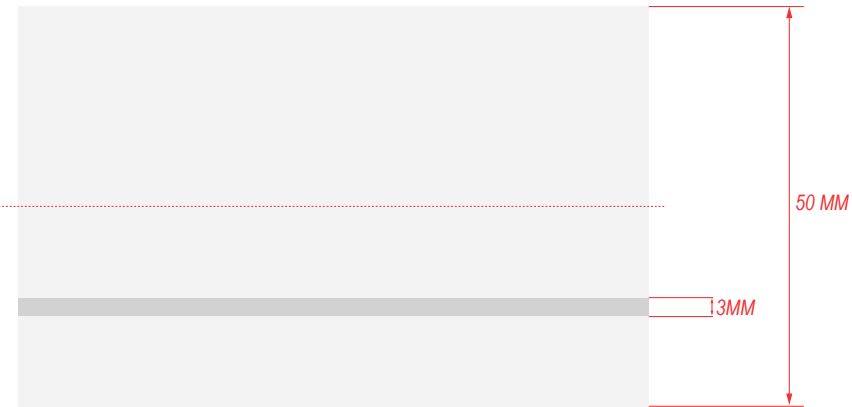
**FLAT KNIT COLLAR STRIPE:**



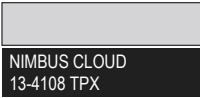
COL 1:



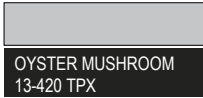
COL 2:



COL 1:



COL 2:



# PALACE

RANGE: JACKETS

SEASON: SPRING 2026

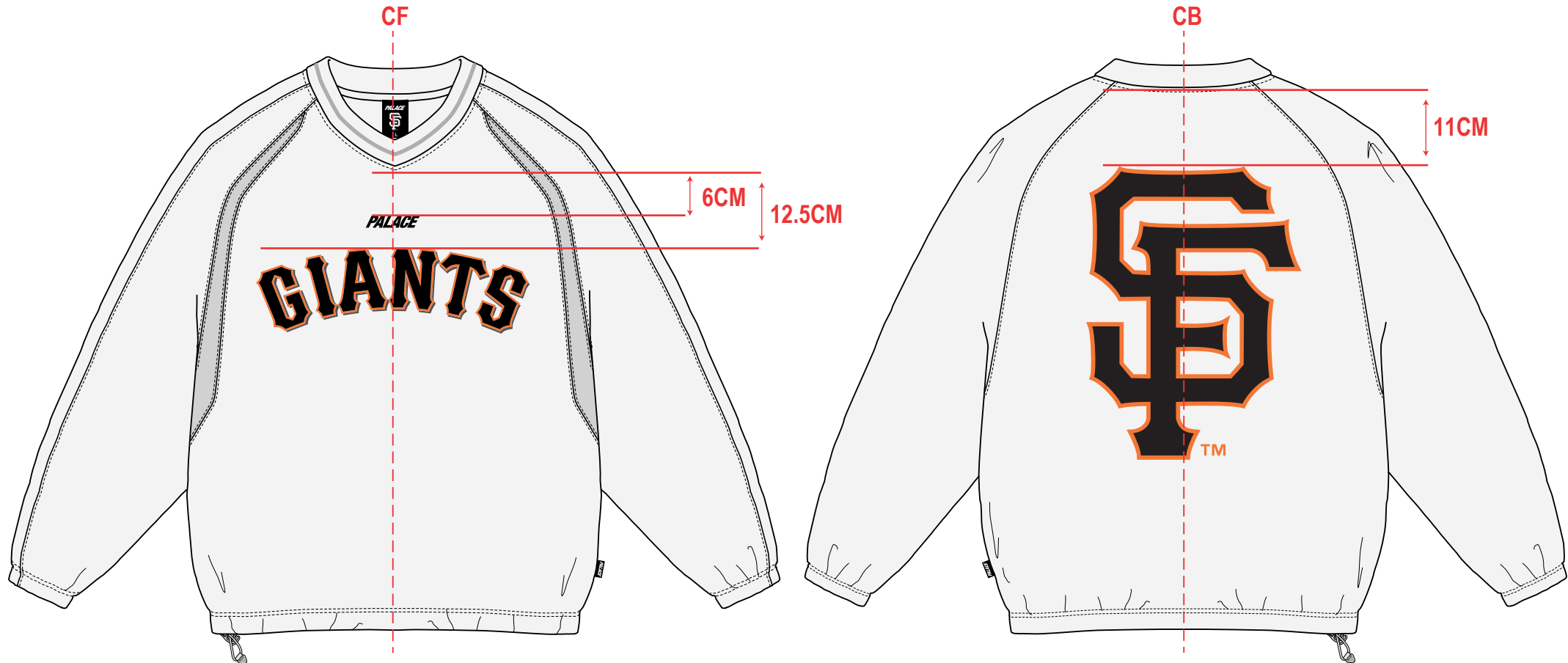
STYLENAME:  
PALACE SAN FRANCISCO GIANTS PULLOVER SHELL TOP

COLOURWAY:  
GREY

SKU CODE:  
P30JK044



## BRANDING PLACEMENT:





## WASH CARE LABEL GUIDE:

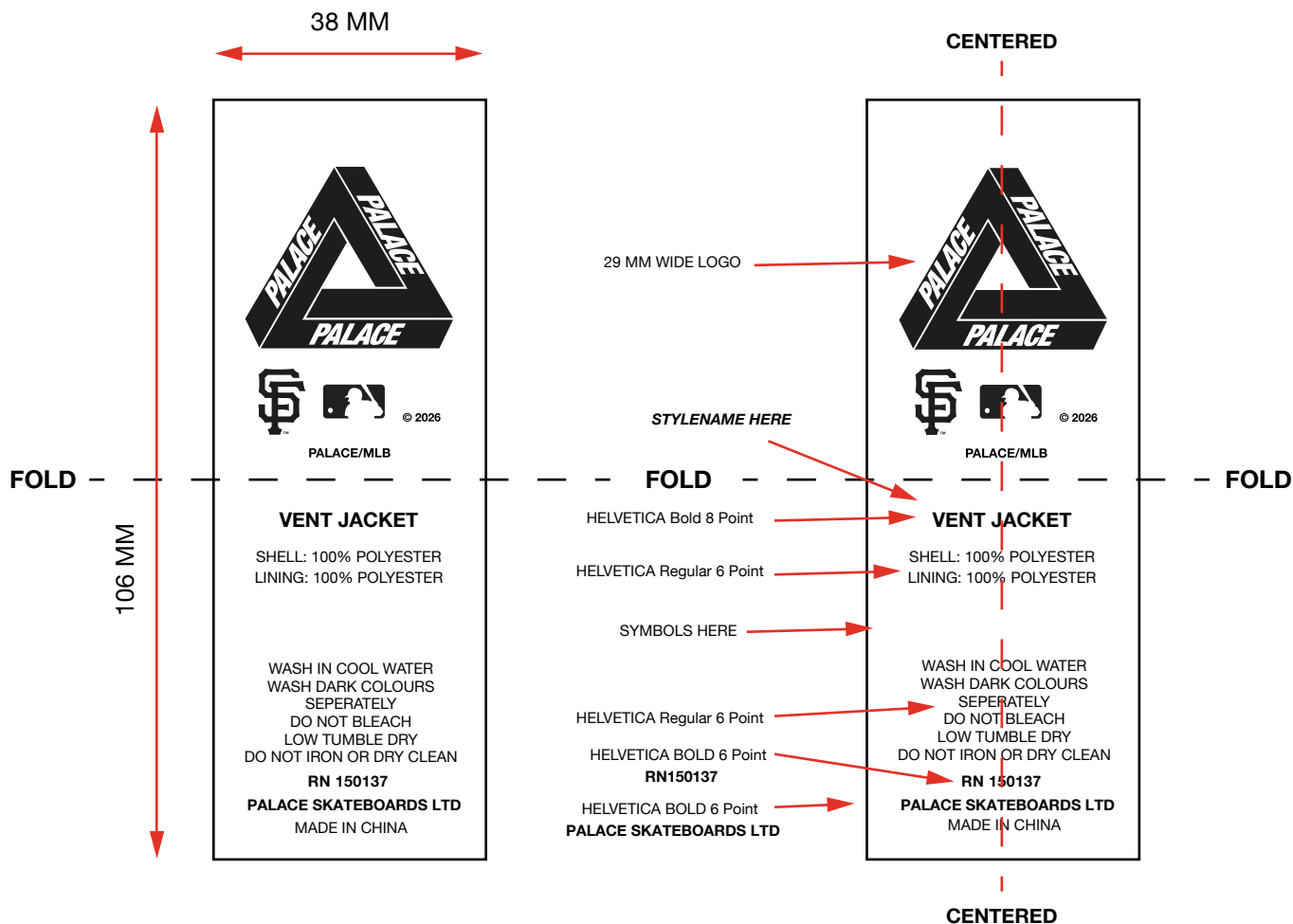
CARE LABEL:

**ALL PALACE PRODUCTS MUST HAVE  
PALACE RN NUMBER &  
'PALACE SKATEBOARDS LTD'  
ON THE WASHCARE LABEL.**

PALACE RN NO:

**RN150137**

**EXAMPLE ONLY!!!! FACTORY MUST CREATE FABRIC CONTENT  
& WASHCARE RELEVANT TO GARMENT STYLE**



SIZED ARTWORK FILES:

**Care\_Label.pdf**