


**From:** Lydia Krause lydia.krause@rapha.cc   
**Subject:** Re: EF Commercial Cottons 25 - Handover  
**Date:** 7 November 2024 at 17:31  
**To:** Edward Scott Greaves edward.greaves@un-available.net  
**Cc:** Lai Vu Thi lai.vu@un-available.net, Thu Nguyen Tran Anh thu.nguyen@un-available.net, Rachel Graham rachel.graham@rapha.cc, RAPHA-SAMPLING RAPHA-SAMPLING@un-available.net, Tien Dang Hong Thuy tien.dang@un-available.net, Linh Bui Thi Truc linh.bui@un-available.net, RAPHA-PRODUCTION RAPHA-PRODUCTION@un-available.net

LK

Hi Ed and Team,

That you for explain gin everything, all understood.  
Please see our comments below, we are making a few changes. Please see the updated CADs attached below. Full Tp's will follow.

Thank you  
Lydia

**Men's short sleeve T-shirt SS25M50156TEE**

White base - we are removing the GEM shapes around the EF logo on the front. Everything else is approved.  
Please can you make 1x size small mens' sample of this style for our approval before production.  
Black Base - This is cancelled. We are moving this design into a LONG SLEEVE T-shirt design (unisex)



**Women's short sleeve T-shirt SS25W50147TEE:**

The Comments are the exact same as for the Men's Style above.  
White Base : Please can you make 1x size small womens' sample of this style for our approval before production.

**Long Sleeve T-shirts SS25M50158TEE:**

White base: We are making a few artwork changes, please see below.  
1. Remove all prints from the sleeves.  
2. Updated Print on the front. Please see new CAD.  
Please can you make 1x size small mens' sample of this style for our approval before production.



**Black Base Long Sleeve T-shirt: this is a new colour way added SS25M50158TEE003:**

The design is the same as before just on a long sleeve base.  
We want to proceed with option 1.  
Please can you make 1x size medium mens' sample of this style for our approval before production.



**Everyday Hoodie SS25M50157TOP:**

We of course have not yet seen the Strike off, which is fine. But we would like to make some changes. We  
Have changed the back print, see updated CAD. I am happy for you NOT to submit the back artwork as a strike off, and just submit it in the final sample.  
We would still like to see the strip off of the front artwork.  
Please can you make 1x size small mens' sample of this style for our approval before production.





IMMERCIAL  
E

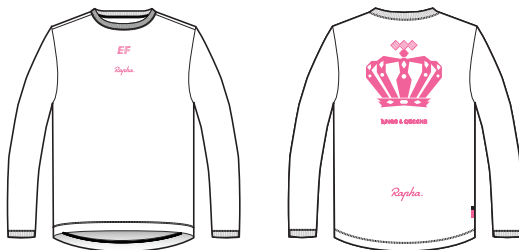
## LOGO OVERVIEW



© Rapha Racing 2023

IMMERCIAL  
E

## LOGO OVERVIEW

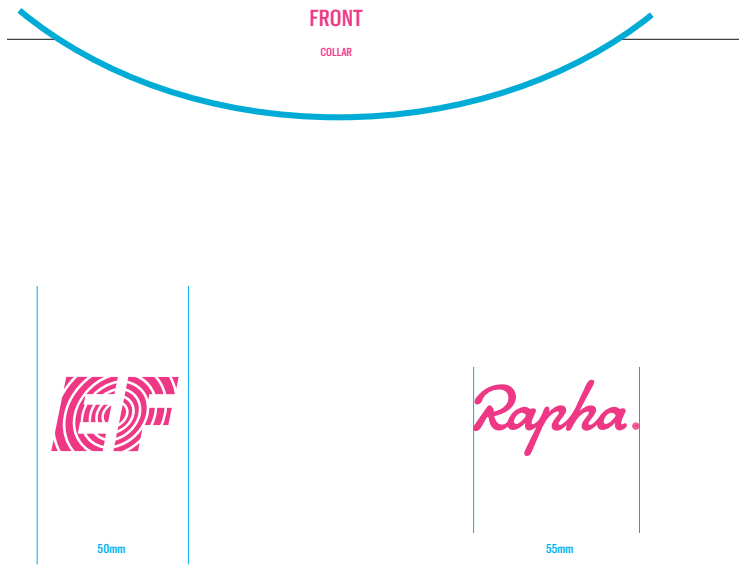


© Rapha Racing 2023

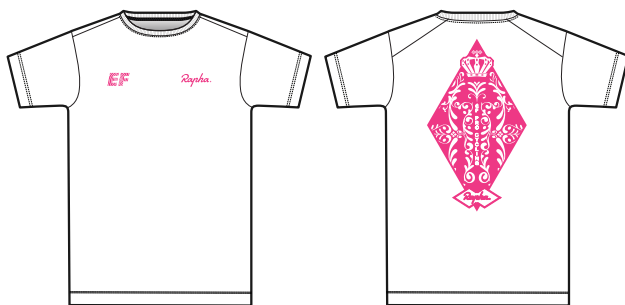
ME

## MAIN CONSTRUCTION





COMMERCIAL  
TEE - BLACK



On 6 Nov 2024, at 09:19, Edward Scott Greaves <edward.greaves@un-available.net> wrote:

Hello Lydia,

#### [Exit Date]

EF Commercial looks like the exit date is going to land mid to end of January.

Fabric for this drop does not land until mid December for Single Jersey (BUT we urgently need approval for French Terry 380gsm). I think the team are sending another lab

#### [Print Qualities]

1.The front prints: The ink looks a bit thin. You can see the black base fabric through the print. The texture of the print also looks a bit lumpy. More dense in some areas than  
[UA]: I do think this maybe the lint from a fleece or jersey when put on top of the strike off. Could Rapha try removing by using a lint roller and provide feedback? The thicker Rapha should change to rubber but the vibrancy of the pink will be lost against the black main fabric colour, we estimate about a 30-40% loss in vibrancy.

Lumpiness - As Rapha do not like the print to glossy and prefer the matte finish, UA has reduced the volume of plastisol within the ink in order to achieve this effect whilst keeping

Moving forward - once Rapha receive handfeel they love, please provide us clear instruction of this so we can use this as the gold standard. Don't feel UA have quite nailed it

2. Back print: you have sent 2 options.

Is there any difference between the 2 options, except the overall colour?

[UA]: Yes, option 1 used 15 screens (more pink version) to accomplish the AW desired and option 2 has 14 screens (red option) used. As mentioned this was all completed v

Is it possible to choose a colour in between the 2 options, option 2 is very pink and option 1 is very red.

[UA]: The print team mention this is the options we can provide at current. Unable to achieve colour in the middle.

For our better understanding can you please explain how this print and level of detail is achieved ?

Is it a screen print with loads of layers ?

Is it direct to garment digital print?

We are super keen to understand.

[UA]: This is completed by using 14/15 screens meaning 14/15 different mixtures of coloured inks were used to complete this AW (please see attached). If we are to use digital Here you can see the print has more depth to the details almost 3D like. Digital print is expensive and I expect it would push the FOB to around \$16-18. I will send this Nike/F

3. Can you please send us a costing for these back base T shirts? We need to access if the cost is viable for us to proceed with this design.

[UA]: We are working through the costing now however as an estimate price for 14/15 screens will be about \$14-16 pending on the quantity.

**SS25M50157TOP** - EF Hoodie: The strike offs for this are outstanding, are they on the way. Or are you awaiting feedback on the back t shirts first?

[UA]: 1<sup>st</sup> round Rapha failed. UA looking to exit 2nd round this week.

Thank you and Best Regards,

**EDWARD GREAVES**

CLIENT ACCOUNT MANAGER  
CLIENT ACCOUNT MANAGEMENT

[M] +84 (0) 768069031  
[T] +84 (0) 28 3883 2493 | Ext: 202  
[E] [edward.greaves@un-available.net](mailto:edward.greaves@un-available.net)

<Outlook-zeuaius.png>

Part of Lot I/3, Street No. 7, Vinh Loc Industrial Park,  
Binh Hung Hoa B Ward, Binh Tan District, Ho Chi Minh City, Vietnam

[UA] **CREATING AN IMPACT THAT MATTERS**

This email and any files transmitted with it are solely intended for the use of the address(es) and may contain information that is confidential and privileged. If you receive this email in error, please advise us by return email immediately. Please also disregard the contents of the email, delete it and destroy any copies immediately. Un-Available Ltd. does not accept

---

**From:** Lai Vu Thi <[lai.vu@un-available.net](mailto:lai.vu@un-available.net)>  
**Sent:** Wednesday, November 6, 2024 8:27 AM

**To:** Lydia Krause <[lydia.krause@rapha.cc](mailto:lydia.krause@rapha.cc)>

**Cc:** Thu Nguyen Tran Anh <[thu.nguyen@un-available.net](mailto:thu.nguyen@un-available.net)>; Rachel Graham <[rachel.graham@rapha.cc](mailto:rachel.graham@rapha.cc)>; RAPHA-SAMPLING <[RAPHA-SAMPLING@un-available.net](mailto:RAPHA-SAMPLING@un-available.net)>; Tien Dang <[edward.greaves@un-available.net](mailto:edward.greaves@un-available.net)>; Linh Bui Thi Truc <[linh.bui@un-available.net](mailto:linh.bui@un-available.net)>; RAPHA-PRODUCTION <[RAPHA-PRODUCTION@un-available.net](mailto:RAPHA-PRODUCTION@un-available.net)>

**Subject:** RE: EF Commercial Cottons 25 - Handover

Hi Lydia,

Yes, we have ordered single organic for both EF Commercial and TDU

Thank you and Best Regards,

**LAI VU**

MERCHANDISER  
MERCHANDISING

[M] +84 (0) 973 642 137  
[T] +84 (0) 28 3883 2493 | Ext: 204  
[E] [lai.vu@un-available.net](mailto:lai.vu@un-available.net)

<image001.png>

Part of Lot I/3, Street No. 7, Vinh Loc Industrial Park,  
Binh Hung Hoa B Ward, Binh Tan District, Ho Chi Minh City, Vietnam

[UA] **CREATING AN IMPACT THAT MATTERS**

This email and any files transmitted with it are solely intended for the use of the address(es) and may contain information that is confidential and privileged. If you receive this email in error, please advise us by return email immediately. Please also disregard the contents of the email, delete it and destroy any copies immediately. Un-Available Ltd. does not accept

---

**From:** Lydia Krause <[lydia.krause@rapha.cc](mailto:lydia.krause@rapha.cc)>

**Sent:** Tuesday, November 5, 2024 10:43 PM

**To:** Lai Vu Thi <[lai.vu@un-available.net](mailto:lai.vu@un-available.net)>

**Cc:** Thu Nguyen Tran Anh <[thu.nguyen@un-available.net](mailto:thu.nguyen@un-available.net)>; Rachel Graham <[rachel.graham@rapha.cc](mailto:rachel.graham@rapha.cc)>; RAPHA-SAMPLING <[RAPHA-SAMPLING@un-available.net](mailto:RAPHA-SAMPLING@un-available.net)>; Tien Dang <[edward.greaves@un-available.net](mailto:edward.greaves@un-available.net)>; Linh Bui Thi Truc <[linh.bui@un-available.net](mailto:linh.bui@un-available.net)>; RAPHA-PRODUCTION <[RAPHA-PRODUCTION@un-available.net](mailto:RAPHA-PRODUCTION@un-available.net)>

**Subject:** Re: EF Commercial Cottons 25 - Handover

Hi Lai,

Please see my comment below:

On 5 Nov 2024, at 09:38, Lai Vu Thi <[lai.vu@un-available.net](mailto:lai.vu@un-available.net)> wrote:

Hi Lydia,

Kindly wait for your comment for print strike off.

Well noted that there is the difference in AW between EF Commercial and EF TDU, other trims are the same.  
We will follow print color + quality + print placement as VIK for TDU and will not submit the strike off for this drop.

Yes, but for the TDU order the base material is the organic cotton, same as for EF commercial.  
Please confirm that his is all clear.

Besides, for polybag we will order clear/ transparent (not papyrus) for EF Commercial and EF TDU as Rachel's confirmation in separated email. Thanks to update and send us

Yes, will send asap.

Thank you and Best Regards,

**LAI VU**

MERCHANDISER  
MERCHANDISING

[M] +84 (0) 973 642 137  
[T] +84 (0) 28 3883 2493 | Ext: 204  
[E] [lai.vu@un-available.net](mailto:lai.vu@un-available.net)

<image001.png>

Part of Lot I/3, Street No. 7, Vinh Loc Industrial Park,  
Binh Hung Hoa B Ward, Binh Tan District, Ho Chi Minh City, Vietnam

[UA] **CREATING AN IMPACT THAT MATTERS**

This email and any files transmitted with it are solely intended for the use of the address(es) and may contain information that is confidential and privileged. If you receive this email in error, please advise us by return email immediately. Please also disregard the contents of the email, delete it and destroy any copies immediately. Un-Available Ltd. does not accept

---

**From:** Lydia Krause <[lydia.krause@rapha.cc](mailto:lydia.krause@rapha.cc)>

**Sent:** Monday, November 4, 2024 10:19 PM

**To:** Lai Vu Thi <[lai.vu@un-available.net](mailto:lai.vu@un-available.net)>

**Cc:** Thu Nguyen Tran Anh <[thu.nguyen@un-available.net](mailto:thu.nguyen@un-available.net)>; Rachel Graham <[rachel.graham@rapha.cc](mailto:rachel.graham@rapha.cc)>; RAPHA-SAMPLING <[RAPHA-SAMPLING@un-available.net](mailto:RAPHA-SAMPLING@un-available.net)>; Tien Dang <[edward.greaves@un-available.net](mailto:edward.greaves@un-available.net)>; Linh Bui Thi Truc <[linh.bui@un-available.net](mailto:linh.bui@un-available.net)>

**Subject:** Re: EF Commercial Cottons 25 - Handover

Hello Lai,

My apologies for the delay, I have ben out of office and am only just catching up.

1. The below is the design for the TDU Commercial Order.  
Please see TP's attached here. The style numbers are the same as for the VIK order, we just sue a different BOM.

CONFIDENTIALITY NOTICE: This message may contain confidential and/or legally privileged information and is intended solely for the addressee. If it has been sent to you erroneously, please reply immediately to advise the sender of the mistake and then recipient of the message, any unauthorised dissemination, distribution or copying of the material in the message and any attachments to this message, is strictly forbidden. COMPANY DETAILS: Rapha Racing Limited is a company registered in England and

Lydia Kim Krause  
Teams & SMU Product Engineering Manager

R A P H A  
Performance Roadwear  
[www.rapha.cc](http://www.rapha.cc)

E: [lydia.krause@rapha.cc](mailto:lydia.krause@rapha.cc)  
T: +44 (0) 203 141 1402  
S: Lydia.Krause.Rapha

Rapha Racing Ltd  
Rapha Works  
4 Elthorne Road  
London  
N19 4AG

CONFIDENTIALITY NOTICE: This message may contain confidential and/or legally privileged information and is intended solely for the addressee. If it has been sent and then destroyed the message, any copies of the message and any printout of the message. If you are not the intended recipient of the message, any unauthorised disclosure of the message, any unauthorised dissemination, distribution or copying of the material in the message and any attachments to this message, is strictly forbidden. COMPANY DETAILS: Rapha Racing Limited is a company registered in England and Wales Number 4849594; Reg

CONFIDENTIALITY NOTICE: This message may contain confidential and/or legally privileged information and is intended solely for the addressee. If it has been sent to you erroneously, please reply immediately to advise the sender of the mistake and then destroy the message, any unauthorised dissemination, distribution or copying of the material in the message and any attachments to this message, is strictly forbidden. COMPANY DETAILS: Rapha Racing Limited is a company registered in England and Wales Number 4849594; Reg Office: Rapha, Rapha Works

Lydia Kim Krause  
Teams & SMU Product Engineering Manager

R A P H A  
Performance Roadwear  
[www.rapha.cc](http://www.rapha.cc)

E: [lydia.krause@rapha.cc](mailto:lydia.krause@rapha.cc)  
T: +44 (0) 203 141 1402  
S: Lydia.Krause.Rapha

Rapha Racing Ltd  
Rapha Works  
4 Elthorne Road  
London  
N19 4AG

CONFIDENTIALITY NOTICE: This message may contain confidential and/or legally privileged information and is intended solely for the addressee. If it has been sent to you in error, please reply immediately to advise the sender of the error and then destroy the message, any copies of the message, any unauthorised dissemination, distribution or copying of the material in the message and any attachments to this message, is strictly forbidden. COMPANY DETAILS: Rapha Racing Limited is a company registered in England and Wales Number 4849594; Reg Office: Rapha, Rapha Works