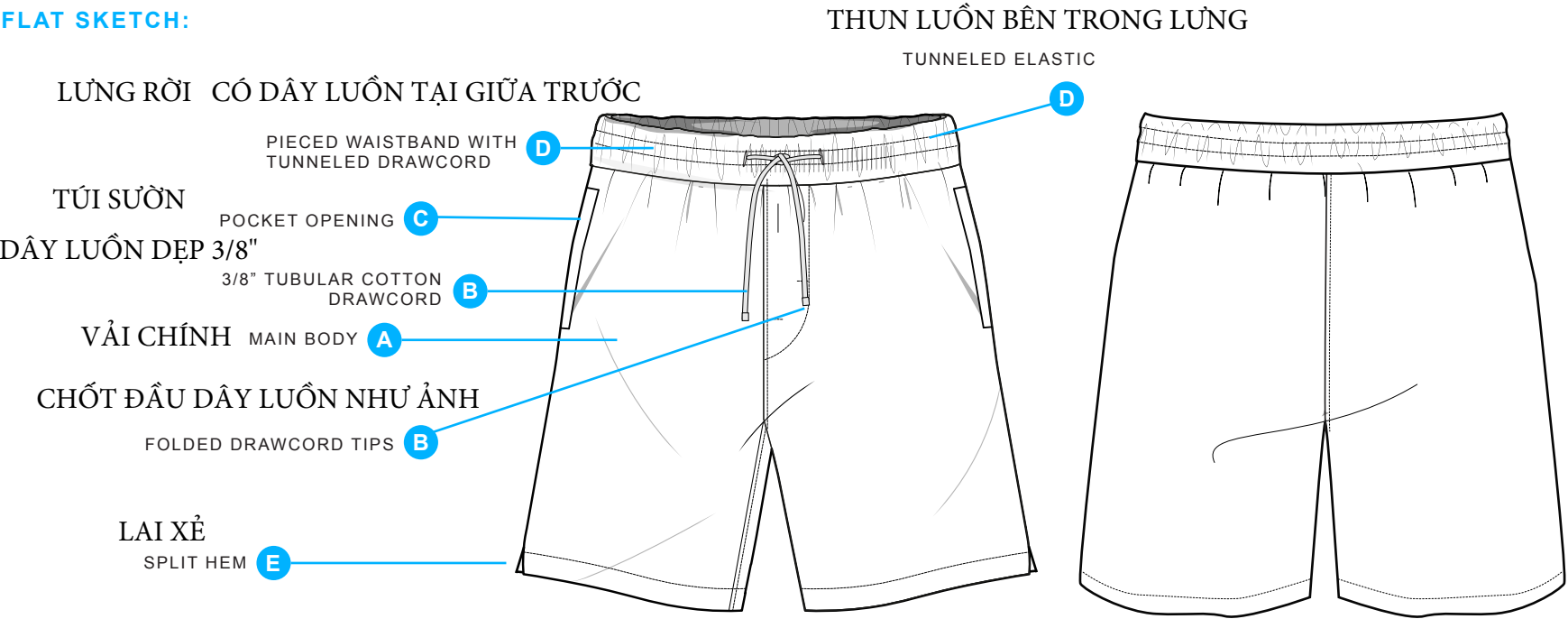




SEASON: SPRING/SUMMER 2025
ARTIST: ROLLING STONES
PRODUCT LINE: 9 CARNABY
PRODUCT NAME: CHAMBRAY SHORT
CLASSIFICATION: MEN'S
PASS OFF DATE: 06/18/2024
REVISED: -

PRODUCT OVERVIEW PAGE

FLAT SKETCH:



BILL OF MATERIALS

	ITEM	CONTENT/WEIGHT	COLOR	PLACEMENT	QTY
A	SELF FABRIC	100% COTTON CHAMBRAY	15-4030 TCX	MAIN BODY, POCKETS, WAISTBAND	X
B	TUBULAR COTTON DRAWCORDS	COTTON	15-4030 TCX	CF BODY	X
C	POCKET LINING	POLY COTTON BLEND	WHITE	POCKET BAGS	X
D	2" WOVEN ELASTIC	XXX	WHITE	WAISTBAND	X
E	X	X	X	X	X
F	X	X	X	X	X
G	X	X	X	X	X

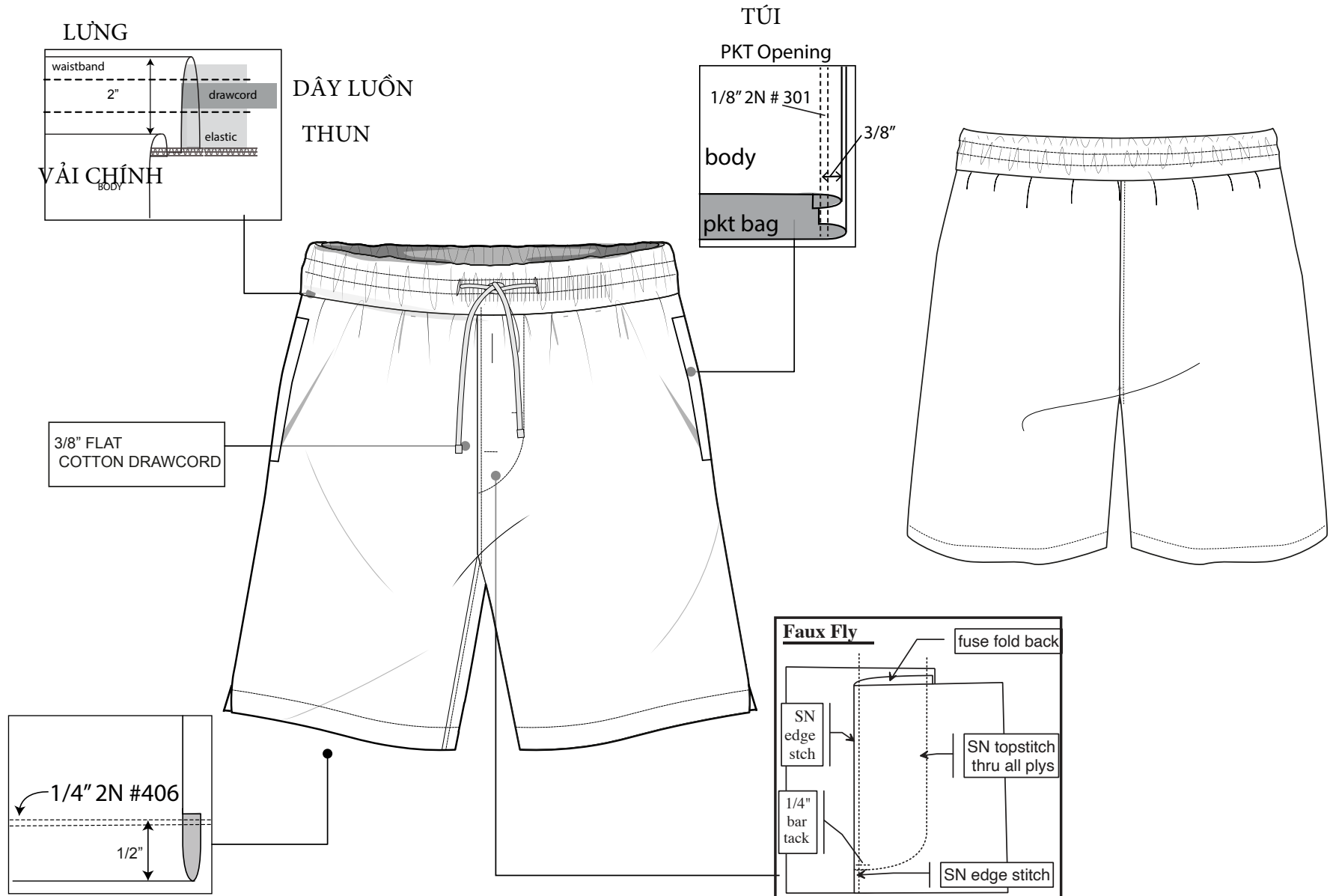


SEASON: SPRING/SUMMER 2025
ARTIST: ROLLING STONES
PRODUCT LINE: 9 CARNABY
PRODUCT NAME: CHAMBRAY SHORT
CLASSIFICATION: MEN'S
PASS OFF DATE: 06/18/2024
REVISED: -

CONSTRUCTION DETAILS PAGE

FLAT SKETCH:

SAMPLE IMAGES:





SEASON: SPRING/SUMMER 2025
ARTIST: ROLLING STONES
PRODUCT LINE: 9 CARNABY
PRODUCT NAME: CHAMBRAY SHORT
CLASSIFICATION: MEN'S
PASS OFF DATE: 06/18/2024
REVISED: -

TRIM OVERVIEW PAGE

TRIM #1: DRAWCORD

MATERIAL/FINISH: COTTON FLAT
COLOR: 15-4030 TCX
SIZE: 3/8"
ART TECHNIQUE (IF APPLICABLE): N/A

REFERENCE IMAGES:



TRIM #2: DRAWCORD TIPS

MATERIAL/FINISH: FOLDED STITCHED FLAT COTTON
COLOR: 15-4030 TCX
SIZE: 3/8"
ART TECHNIQUE (IF APPLICABLE): N/A

REFERENCE IMAGES:



TRIM #3: WOVEN ELASTIC

MATERIAL/FINISH: WOVEN
COLOR: WHITE
SIZE: 2"
ART TECHNIQUE (IF APPLICABLE): N/A

REFERENCE IMAGES:





SEASON: SPRING/SUMMER 2025
ARTIST: ROLLING STONES
PRODUCT LINE: 9 CARNABY
PRODUCT NAME: CHAMBRAY SHORT
CLASSIFICATION: MEN'S
PASS OFF DATE: 06/18/2024
REVISED: -

ARTWORK OVERVIEW PAGE

MOCKUP:

GARMENT/WASH COLORS:



ARTWORK

	TECHNIQUE	COLORS	PLACEMENT	SIZE (W OR H)
A	DIRECT EMBROIDERY	2349C EMBROIDERY	UNDER LEFT POCKET	SEE PSD FILE
B	WOVEN LABEL	WHITE , BLACK	BOTTOM RIGHT HEM	SEE AI FILE
C	X	X	X	X
D	X	X	X	X
E	X	X	X	X
F	X	X	X	X
G	X	X	X	X



SEASON: SPRING/SUMMER 2025
ARTIST: ROLLING STONES
PRODUCT LINE: 9 CARNABY
PRODUCT NAME: CHAMBRAY SHORT
CLASSIFICATION: MEN'S
PASS OFF DATE: 06/18/2024
REVISED: -

ARTWORK PAGE

ARTWORK A

TECHNIQUE: DIRECT EMBROIDERY
COLORS: 2349C
PLACEMENT: UNDER WEARER'S FRONT RIGHT POCKET
SIZE: 2 3/4" W
ARTWORK IS TO SCALE

REFERENCE IMAGES:



← 2 3/4" W →

