



Striped Crewneck - Style #SS26TCN1418

Mens, Sweater, Spring/Summer, 2026

Summary  
09-12-2025

DENIM TEARS	OUTERWEAR: C002 CREWNECK	SEASON: SP26	DESIGNER: TINA
	FACTORY: FACTORY	COLLECTION: OUR LADY LIBERTY	VARIANTS: 3
SKETCH			



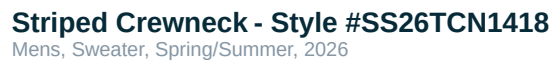
DENIM TEARS CONFIDENTIAL	UPDATED: XX/XX/XXXX
--------------------------	---------------------

Name	Striped Crewneck
Style No.	SS26TCN1418
Description	Striped Crewneck
Division	Mens
Category	Sweater
Season	Spring/Summer
Year	2026
Size Scale	M -Sample size

XS S M L XL XXL

Factory	Un-Available
Created by/Author	9/12/2025 Genny Mayden genny@denimtears.com

Striped Crewneck



### 1. No Color Assigned

Carryover/New	Not Set
---------------	---------



DENIM TEARS	OUTERWEAR: C002 CREWNECK	SEASON: SP26	DESIGNER: TINA
	FACTORY: FACTORY	COLLECTION: OUR LADY LIBERTY	VARIANTS: 3
SKETCH			



DENIM TEARS CONFIDENTIAL

UPDATED: XX/XX/XXXX

SP26-C002\_Crewneck-1



DENIM TEARS	OUTERWEAR: C002 CREWNECK	SEASON: SP26	DESIGNER: TINA
	FACTORY: FACTORY	COLLECTION: OUR LADY LIBERTY	VARIANTS: 3
COLORWAYS			



OLIVE

SELF: OLIVE/YELLOW  
RIBBING: OLIVE  
STITCH: OLIVE  
FABRIC: XXXX



NAVY

SELF: NAVY/WHITE  
RIBBING: NAVY  
STITCH: NAVY  
FABRIC: XXXX

DENIM TEARS CONFIDENTIAL	UPDATED: XX/XX/XXXX
--------------------------	---------------------

SP26-C002\_Crewneck-2



DENIM TEARS	OUTERWEAR: C002 CREWNECK	SEASON: SP26	DESIGNER: TINA
	FACTORY: FACTORY	COLLECTION: OUR LADY LIBERTY	VARIANTS: 3
COLOR & QUALITY STANDARDS			

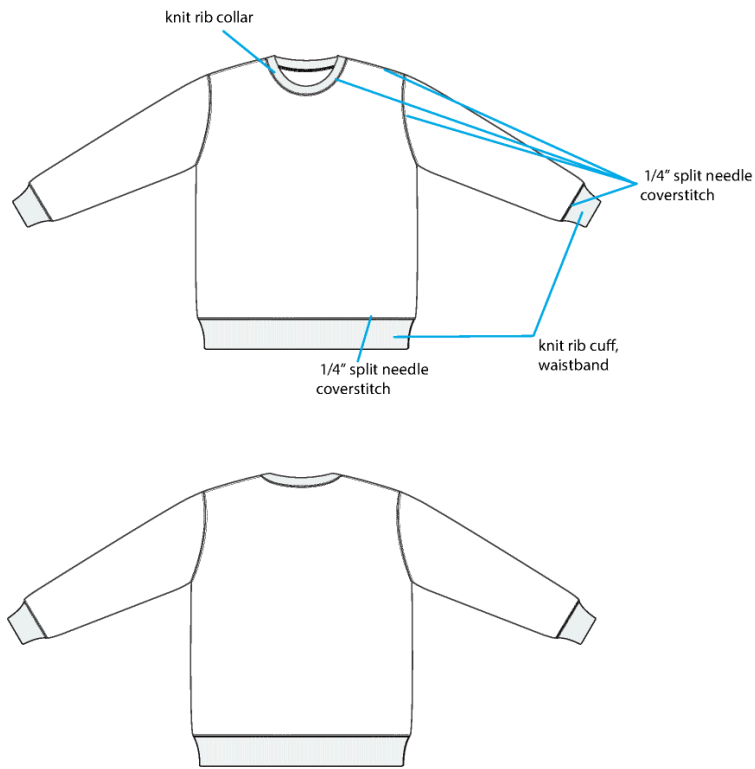
ITEM	PLACEMENT	QUANTITY	SIZE	COLORWAY 1	COLORWAY 2		
100% COTTON - XXXX	SELF A: MAIN BODY			<div><div></div><div></div></div> <div>OLIVE - BRONZE GREEN 18-0317 TCX &amp; YELLOW - OCHRE 14-1036 TCX</div>	<div><div></div><div></div></div> <div>NAVY - NAVY BLAZER 19-3923 TCX &amp; WHITE - BRIGHT WHITE 11-0601 TCX</div>		
2X1KNIT RIB- XXXX	SELF B: SLEEVE CUFF & HEM			<div><div></div></div> <div>OLIVE - BRONZE GREEN 18-0317 TCX</div>	<div><div></div></div> <div>NAVY - NAVY BLAZER 19-3923 TCX</div>		
THREAD 1:	SELF A: MAIN BODY, EMBROIDERED EYELET, BNT			<div><div></div></div> <div>DTM OLIVE</div>	<div><div></div></div> <div>DTM NAVY</div>		
WASH:	GARMENT			<div></div> <div>45 MIN ENZYME WASH &amp; SOFTENER</div>	<div></div> <div>45 MIN ENZYME WASH &amp; SOFTENER</div>		

DENIM TEARS CONFIDENTIAL	UPDATED: XX/XX/XXXX
--------------------------	---------------------

SP26-C002\_Crewneck-4  
1. No Color Assigned



DENIM TEARS	OUTERWEAR: C002 CREWNECK	SEASON: SP26	DESIGNER: TINA
	FACTORY: FACTORY	COLLECTION: OUR LADY LIBERTY	VARIANTS: 3
CONTRUCTION			



DENIM TEARS CONFIDENTIAL	UPDATED: XX/XX/XXXX
--------------------------	---------------------

SP26-C002\_Crewneck-3



DENIM TEARS	OUTERWEAR: C002 CREWNECK	SEASON: SP26	DESIGNER: TINA
	FACTORY: FACTORY	COLLECTION: OUR LADY LIBERTY	VARIANTS: 3

GRAPHICS

DIRECT EMBROIDERY

13" WIDE, 1.53" TALL

DENIM TEARS

ARTWORK NOT @ 100% SCALE

DENIM TEARS CONFIDENTIAL

UPDATED: XX/XX/XXXX

SP26-C002\_Crewneck-5



DENIM TEARS	OUTERWEAR: C002 CREWNECK	SEASON: SP26	DESIGNER: TINA
	FACTORY: FACTORY	COLLECTION: OUR LADY LIBERTY	VARIANTS: 3
ARTWORK PLACEMENT & COLOR			



COLORWAY: OLIVE

DENIM TEARS

YELLOW - OCHRE 14-1036 TCX

COLORWAY: NAVY

DENIM TEARS

GREEN - CLASSIC GREEN 16-6340 TCX

LT BLUE - AQUARIUS 16-4530 TCX

ORANGE - CITRUS 14-0955 TCX

RED - FIERY RED 18-1664 TCX

YELLOW - BLAZING YELLOW 12-0643 TCX

FUSCHIA - FUSCHIA PURPLE 18-2438 TCX

BLUE - ROYAL BLUE 19-3955 TCX

PURPLE - AMARANTH PURPLE 19-3536 TCX

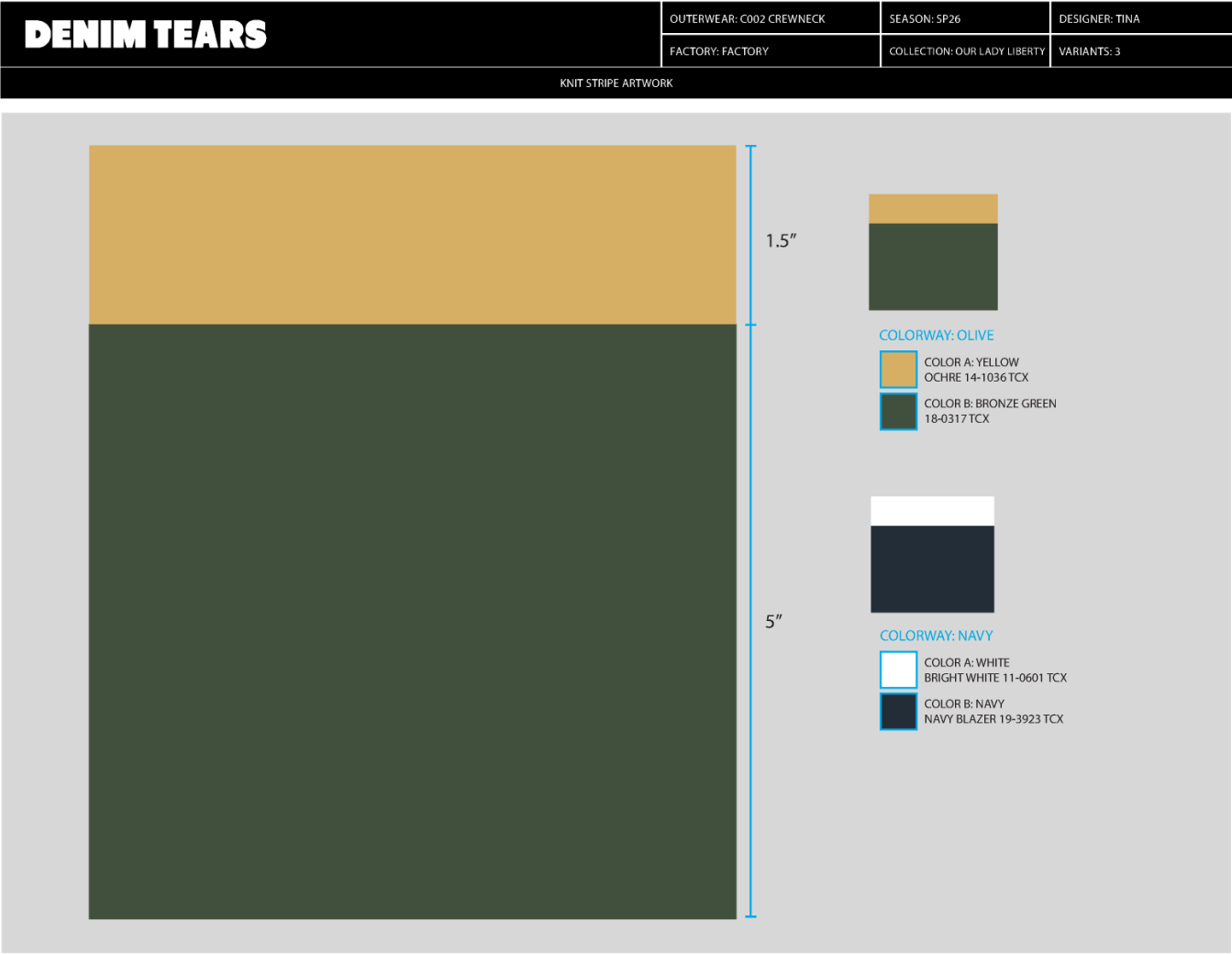
ORANGE - DRAGON FIRE 16-1460 TCX

LT GREEN - LIME GREEN 14-0452 TCX

DENIM TEARS CONFIDENTIAL	UPDATED: XX/XX/XXXX
--------------------------	---------------------

SP26-C002\_Crewneck-6





SP26-C002\_Crewneck-7



DENIM TEARS	OUTERWEAR: C002 CREWNECK	SEASON: SP26	DESIGNER: TINA
	FACTORY: FACTORY	COLLECTION: OUR LADY LIBERTY	VARIANTS: 3
STRIPE ARTWORK			

\*MATCH CAD FOR STRIPE PLACEMENT



SP26-C002\_Crewneck-8



**Sample Size: M**

POINT OF MEASURE	CODE	TOLERANCE	XS	S	M	L	XL	XXL
Body Length from CB Neck	L51T0o	1/4 in	0 in	0 in	26 1/8 in	0 in	0 in	0 in
Front Body Length from HPS	Cmnd2Q	1/4 in	0 in	0 in	27 1/2 in	0 in	0 in	0 in
Shoulder Seam Forward	xgRDFB	1/8 in	0 in	0 in	1/2 in	0 in	0 in	0 in
Shoulder Drop from HPS	wQ4qr9	1/8 in	0 in	0 in	2 1/2 in	0 in	0 in	0 in
Shoulder Width (Sm to Sm)	Rt4BS0	1/4 in	0 in	0 in	23 in	0 in	0 in	0 in
Across Front @ 6" Blw HPS	KBgWIO	1/4 in	0 in	0 in	21 1/2 in	0 in	0 in	0 in
Across Back @ 6" Blw HPS	vxCJU5	1/4 in	0 in	0 in	22 in	0 in	0 in	0 in
Chest @ 1" Blw Armhole	zuEYg1	3/8 in	0 in	0 in	25 1/4 in	0 in	0 in	0 in
Bottom Sweep @ 1" Above Cuff Seam	E40dli	3/8 in	0 in	0 in	24 1/4 in	0 in	0 in	0 in
Bottom Sweep @ Edge	tKtZ6U	3/8 in	0 in	0 in	19 3/4 in	0 in	0 in	0 in
Cuff Height @ Sweep	lqURGW	1/8 in	0 in	0 in	2 5/8 in	0 in	0 in	0 in
Sleeve Length From CB Neck to Cuff Edge (3-Point Measurement)	A4qCGQ	3/8 in	0 in	0 in	36 1/2 in	0 in	0 in	0 in
Armhole Straight (Sm to Sm)	hkBlb8	1/4 in	0 in	0 in	10 1/2 in	0 in	0 in	0 in
Bicep @ 1" Blw Armhole	ZFbGfF	1/4 in	0 in	0 in	10 1/4 in	0 in	0 in	0 in
Elbow @ Half of Inseam (Excl Cuff)	0R4AXC	1/4 in	0 in	0 in	8 1/4 in	0 in	0 in	0 in
Sleeve Opening @ 1" Above Cuff Seam	08zjxU	1/4 in	0 in	0 in	6 1/4 in	0 in	0 in	0 in
Sleeve Opening on Edge	evuF23	1/8 in	0 in	0 in	4 1/8 in	0 in	0 in	0 in
Sleeve Cuff Height	cHRgwT	1/8 in	0 in	0 in	2 5/8 in	0 in	0 in	0 in
Neck Width @ HPS (Sm to Sm)	mKoBax	1/8 in	0 in	0 in	8 3/4 in	0 in	0 in	0 in
Front Neck Drop (HPS to CF Neck Sm)	TjF8iY	1/8 in	0 in	0 in	3 1/2 in	0 in	0 in	0 in
Back Neck Drop (HPS to CB Neck Sm)	30zyGo	1/8 in	0 in	0 in	1 3/8 in	0 in	0 in	0 in
Neck Trim Height	AqR78o	1/8 in	0 in	0 in	1 in	0 in	0 in	0 in



## Fitting 9.5.25 - Freelance Account

CREATED ON SEP 12, 2025 8:09 PM

### **FIT/PATTERN**

**\*\*Follow the provided reference block pattern \*\*PULLOVER HOODIE"**

**\*\*Remove the hood and revise to Crew Neck> see spec page for the neck target specs**

**\*\*Neck trim - rib on fold**

### **CONSTRUCTION/WORKMANSHIP**

**\*\*Finish with 1/4" split needle top stitch (Bottom Coverstitch):**

- front/back neck> no need for tape at back neck
- shoulder seams
- armhole seams
- cuff seams at sleeve and bottom opening

**\*\*Please keep each side of the seam with the split needle topstitch flat without bumps - see image for the finish reference**

Thanks,



Split Needle Finish.jpg